

Caspase-7 Rabbit pAb

CatalogNo: YT0659 **Orthogonal Validated** 

Key Features

Host Species

- Rabbit

Reactivity

- Human, Mouse

Applications

- WB, IHC, IF, ELISA

MW

- 35kD (Observed)

Isotype

- IgG

Storage

Storage* -15°C to -25°C/1 year (Do not lower than -25°C)

Formulation Liquid in PBS containing 50% glycerol, 0.5% BSA and 0.02% sodium azide.

Recommended Dilution Ratios

WB 1:500-1:2000

IHC:1:50-300

ELISA 1:20000

IF 1:50-200

Basic Information

Clonality Polyclonal

Immunogen Information

Immunogen The antiserum was produced against synthesized peptide derived from human Caspase-7. AA range:45-94

Specificity Caspase-7 Polyclonal Antibody detects endogenous levels of Caspase-7 protein.

Target Information

Gene name CASP7

Protein Name Caspase7

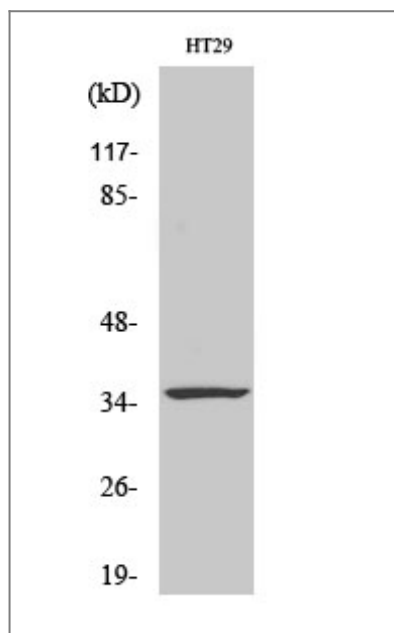
Organism	Gene ID	UniProt ID
Human	840;	P55210;
Mouse		P97864;

Cellular Localization Cytoplasm.

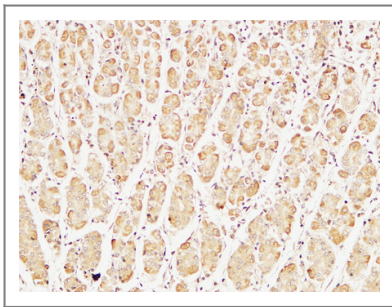
Tissue specificity Highly expressed in lung , skeletal muscle , liver , kidney , spleen and heart , and moderately in testis. No expression in the brain.

Function Catalytic activity:Strict requirement for an Asp residue at position P1 and has a preferred cleavage sequence of Asp-Glu-Val-Asp-|- . ,enzyme regulation:Inhibited by isatin sulfonamides. ,Function:Involved in the activation cascade of caspases responsible for apoptosis execution. Cleaves and activates sterol regulatory element binding proteins (SREBPs) . Proteolytically cleaves poly (ADP-ribose) polymerase (PARP) at a '216-Asp-|-Gly-217' bond. Overexpression promotes programmed cell death. ,PTM:Cleavages by granzyme B or caspase-10 generate the two active subunits. Propeptide domains can also be cleaved efficiently by caspase-3. Active heterodimers between the small subunit of caspase-7 and the large subunit of caspase-3 , and vice versa , also occur. ,similarity:Belongs to the peptidase C14A family. ,subunit:Heterotetramer that consists of two anti-parallel arranged heterodimers , each one formed by a 20 kDa (p20) and a 11 kDa (p11) subunit. ,tissue specificity:Highly expressed in lung , skeletal muscle , liver , kidney , spleen and heart , and moderately in testis. No expression in the brain. ,

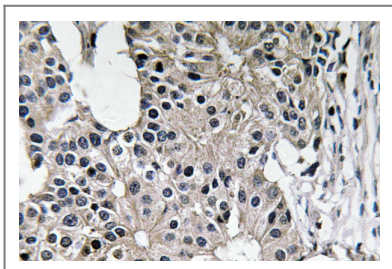
Validation Data



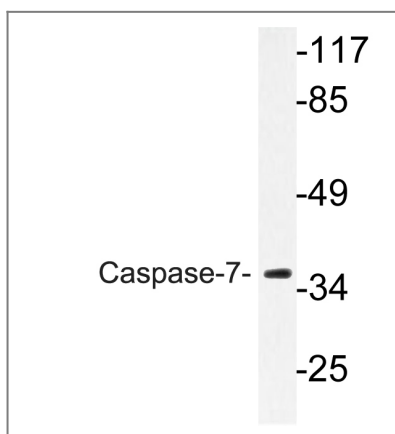
Western Blot analysis of various cells using Caspase-7 Polyclonal Antibody diluted at 1:1000



Immunohistochemical analysis of paraffin-embedded Human stomach. 1, Antibody was diluted at 1:400 (4°C overnight). 2, High-pressure and temperature EDTA, pH8.0 was used for antigen retrieval. 3, Secondary antibody was diluted at 1:200 (room temperature, 30min).



Immunohistochemistry analysis of Caspase-7 antibody in paraffin-embedded human breast carcinoma tissue.



Western blot analysis of lysate from HT-29 cells, using Caspase-7 antibody.

Contact information

Orders: order.cn@immunoway.com
Support: support.cn@immunoway.com
Telephone: 400-8787-807(China)
Website: <http://www.immunoway.com.cn>
Address: 2200 Ringwood Ave San Jose, CA 95131 USA



Please scan the QR code to access additional product information:
Caspase-7 Rabbit pAb

For Research Use Only. Not for Use in Diagnostic Procedures.

[Antibody](#) | [ELISA Kits](#) | [Protein](#) | [Reagents](#)