

## Casein Kinase II $\beta$ Rabbit pAb

CatalogNo: YT0644

### Key Features

#### Host Species

- Rabbit

#### Reactivity

- Human, Mouse, Rat

#### Applications

- WB, IHC, IF, ELISA

#### MW

- 25kD (Observed)

#### Isotype

- IgG

### Storage

**Storage\*** -15°C to -25°C/1 year (Do not lower than -25°C)

**Formulation** Liquid in PBS containing 50% glycerol, 0.5% BSA and 0.02% sodium azide.

### Recommended Dilution Ratios

**WB 1:500-1:2000**

**IHC 1:100-1:300**

**ELISA 1:5000**

**IF 1:50-200**

### Basic Information

**Clonality** Polyclonal

### Immunogen Information

**Immunogen** The antiserum was produced against synthesized peptide derived from human CKII-beta. AA range:166-215

**Specificity** Casein Kinase II $\beta$  Polyclonal Antibody detects endogenous levels of Casein Kinase II $\beta$  protein.

## Target Information

**Gene name** CSNK2B

**Protein Name** Casein kinase II subunit beta

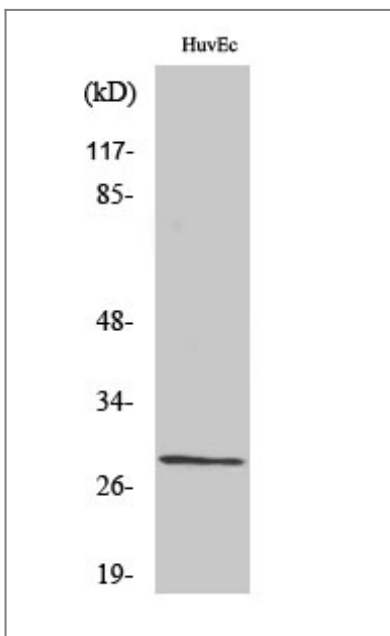
Organism	Gene ID	UniProt ID
Human	<a href="#">1460</a> ;	<a href="#">P67870</a> ;
Mouse	<a href="#">13001</a> ;	<a href="#">P67871</a> ;
Rat	<a href="#">81650</a> ;	<a href="#">P67874</a> ;

**Cellular Localization** nucleus,nucleoplasm,cytoplasm,cytosol,plasma membrane,protein kinase CK2 complex,PcG protein complex,extracellular exosome,

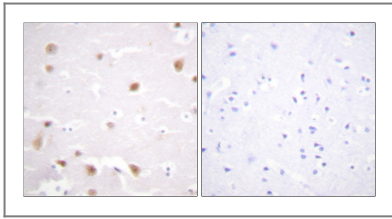
**Tissue specificity** Brain,Epithelium,

**Function** Function:Participates in Wnt signaling (By similarity). Plays a complex role in regulating the basal catalytic activity of the alpha subunit.,PTM:N-glycosylated.,PTM:Phosphorylated by alpha subunit.,similarity:Belongs to the casein kinase 2 subunit beta family.,similarity:Contains 1 UPAR/Ly6 domain.,subunit:Forms oligomer.,subunit:Tetramer composed of an alpha subunit, an alpha' subunit and two beta subunits. Interacts with TCTEX1D3 (By similarity). Interacts with CD163. Also component of a CK2-SPT16-SSRP1 complex composed of SSRP1, SUPT16H, CSNK2A1, CSNK2A2 and CSNK2B, the complex associating following UV irradiation.,

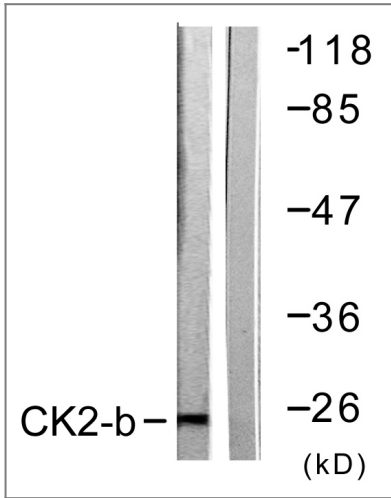
## Validation Data



Western Blot analysis of various cells using Casein Kinase II $\beta$  Polyclonal Antibody



Immunohistochemistry analysis of paraffin-embedded human brain tissue, using CKII-beta Antibody. The picture on the right is blocked with the synthesized peptide.



Western blot analysis of lysates from HUVEC cells, using CKII-beta Antibody. The lane on the right is blocked with the synthesized peptide.

## Contact information

Orders: [order.cn@immunoway.com](mailto:order.cn@immunoway.com)  
Support: [support.cn@immunoway.com](mailto:support.cn@immunoway.com)  
Telephone: 400-8787-807(China)  
Website: <http://www.immunoway.com.cn>  
Address: 2200 Ringwood Ave San Jose, CA 95131 USA



Please scan the QR code to access additional product information:  
**Casein Kinase II $\beta$**   
**Rabbit pAb**

For Research Use Only. Not for Use in Diagnostic Procedures.

[Antibody](#) | [ELISA Kits](#) | [Protein](#) | [Reagents](#)