

CARP Rabbit pAb

CatalogNo: YT0640

| Key Features

Host Species

- Rabbit

Reactivity

- Human, Mouse, Rat

Applications

- WB, IHC, IF, ELISA

MW

- 36kD (Observed)

Isotype

- IgG

| Recommended Dilution Ratios

WB 1:500-1:2000

IHC 1:100-1:300

ELISA 1:20000

IF 1:50-200

| Storage

Storage*

-15°C to -25°C/1 year (Do not lower than -25°C)

Formulation

Liquid in PBS containing 50% glycerol, 0.5% BSA and 0.02% sodium azide.

| Basic Information

Clonality

Polyclonal

| Immunogen Information

Immunogen

The antiserum was produced against synthesized peptide derived from human ANKRD1. AA range: 231-280

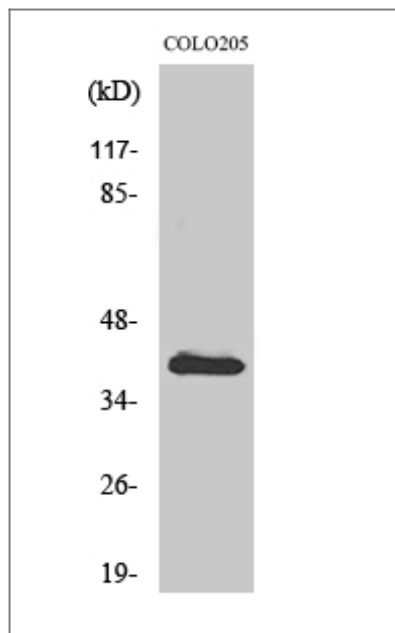
Specificity

CARP Polyclonal Antibody detects endogenous levels of CARP protein.

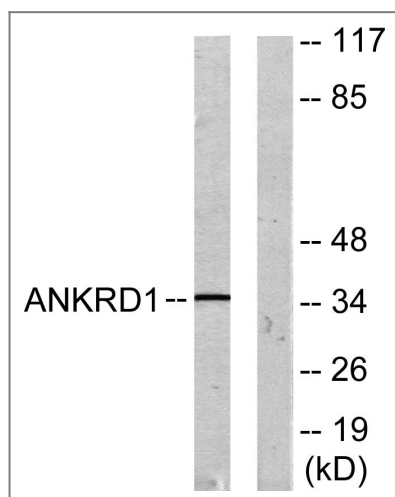
| Target Information

Gene name	ANKRD1		
Protein Name	Ankyrin repeat domain-containing protein 1		
	Organism	Gene ID	UniProt ID
	Human	27063 ;	Q15327 ;
	Mouse	107765 ;	Q9CR42 ;
	Rat	27064 ;	Q8R560 ;
Cellular Localization	Nucleus .		
Tissue specificity	Mainly expressed in activated vascular endothelial cells. To a lower extent, also expressed in hepatoma cells.		
Function	<p>Disease:Defects in ANKRD1 may be a cause of total anomalous pulmonary venous return (TAPVR) [MIM:106700]. TAPVR is a rare congenital heart disease (CHD) in which the pulmonary veins fail to connect to the left atrium during cardiac development, draining instead into either the right atrium or one of its venous tributaries. This disease accounts for 1.5% of all CHDs and has a prevalence of approximately 1 out of 15'000 live births.,Function:May play an important role in endothelial cell activation. May act as a nuclear transcription factor that negatively regulates the expression of cardiac genes. Induction seems to be correlated with apoptotic cell death in hepatoma cells.,induction:By TNF, IL1A and parthenolide.,miscellaneous:A chromosomal aberration in the region of ANKRD1 may be a cause of total anomalous pulmonary venous return (TAPVR) [MIM:106700]. Translocation t(10;21)(q23.31;q11.2). The translocation apparently alters the expression pattern of nearby genes on chromosome 10 by means of a positional effect, and among the genes whose expression pattern is changed due to this chromosomal rearrangement, the ANKRD1 stood out as a plausible candidate gene for TAPVR pathogenesis. This rearrangement apparently does not disrupts any known genes.,similarity:Contains 5 ANK repeats.,subunit:Interacts with YBX1 (By similarity). Interacts with TTN/titin.,tissue specificity:Mainly expressed in activated vascular endothelial cells. To a lower extent, also expressed in hepatoma cells.,</p>		

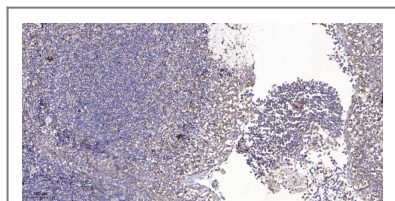
| Validation Data



Western Blot analysis of various cells using CARP Polyclonal Antibody



Western blot analysis of lysates from COLO205 cells, using ANKRD1 Antibody. The lane on the right is blocked with the synthesized peptide.



Immunohistochemical analysis of paraffin-embedded human tonsil. 1, Antibody was diluted at 1:200(4° overnight). 2, Tris-EDTA,pH9.0 was used for antigen retrieval. 3,Secondary antibody was diluted at 1:200(room temperature, 45min).

Contact information

Orders: order.cn@immunoway.com
 Support: support.cn@immunoway.com
 Telephone: 400-8787-807(China)
 Website: <http://www.immunoway.com.cn>
 Address: 2200 Ringwood Ave San Jose, CA 95131 USA



Please scan the QR code to access additional product information:
CARP Rabbit pAb

