

CARKL Rabbit pAb

CatalogNo: YT0639

Key Features

Host Species

- Rabbit

Reactivity

- Human, Mouse, Rat

Applications

- WB, IHC, IF, ELISA

MW

- 55kD (Observed)

Isotype

- IgG

Recommended Dilution Ratios

WB 1:500-1:2000

IHC 1:100-1:300

ELISA 1:20000

IF 1:50-200

Storage

Storage*

-15°C to -25°C/1 year (Do not lower than -25°C)

Formulation

Liquid in PBS containing 50% glycerol, 0.5% BSA and 0.02% sodium azide.

Basic Information

Clonality

Polyclonal

Immunogen Information

Immunogen

The antiserum was produced against synthesized peptide derived from human CARKL. AA range: 31-80

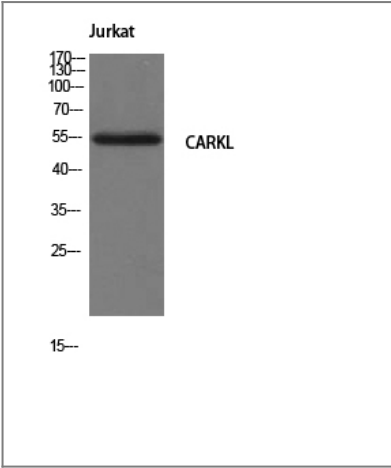
Specificity

CARKL Polyclonal Antibody detects endogenous levels of CARKL protein.

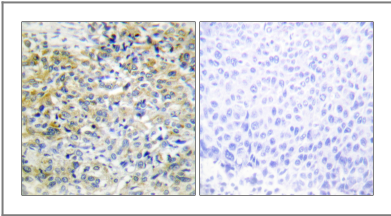
Target Information

Gene name	SHPK		
Protein Name	Sedoheptulokinase		
	Organism	Gene ID	UniProt ID
	Human	23729;	Q9UHI6;
	Mouse	74637;	Q9D5J6;
Cellular Localization	Cytoplasm .		
Tissue specificity	Strongly expressed in liver, kidney and pancreas. Expressed at lower levels in placenta and heart. Very weakly expressed in lung and brain.		
Function	Catalytic activity:ATP + sedoheptulose = ADP + sedoheptulose 7-phosphate.,Disease:Deficiency of the SHPK gene in cystinosis patients with a common 57-Kb deletion causes urinary accumulation of sedoheptulose and erythritol.,similarity:Belongs to the FGGY kinase family.,tissue specificity:Strongly expressed in liver, kidney and pancreas. Expressed at lower levels in placenta and heart. Very weakly expressed in lung and brain.,		

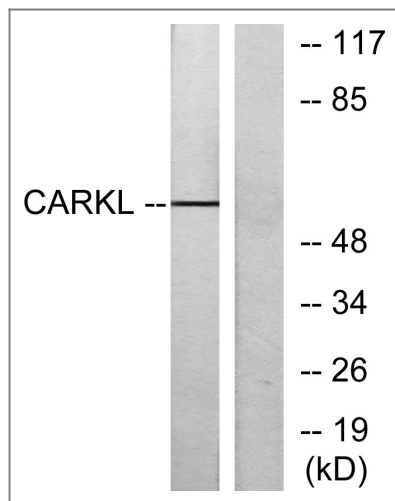
Validation Data



Western Blot analysis of Jurkat cells using CARKL Polyclonal Antibody



Immunohistochemistry analysis of paraffin-embedded human liver carcinoma tissue, using CARKL Antibody. The picture on the right is blocked with the synthesized peptide.



Western blot analysis of lysates from Jurkat cells, using CARKL Antibody. The lane on the right is blocked with the synthesized peptide.

Contact information

Orders: order.cn@immunoway.com
Support: support.cn@immunoway.com
Telephone: 400-8787-807(China)
Website: <http://www.immunoway.com.cn>
Address: 2200 Ringwood Ave San Jose, CA 95131 USA



Please scan the QR code
to access additional
product information:
CARKL Rabbit pAb

For Research Use Only. Not for Use in Diagnostic Procedures.

[Antibody](#) | [ELISA Kits](#) | [Protein](#) | [Reagents](#)