

CARD 14 Rabbit pAb

CatalogNo: YT0636

Key Features

Host Species

- Rabbit

Reactivity

- Human, Mouse

Applications

- IHC, IF, ELISA

MW

- 110kD (Observed)

Isotype

- IgG

Recommended Dilution Ratios

IHC 1:100-1:300**IF 1:200-1:1000****ELISA 1:40000****Not yet tested in other applications.**

Storage

Storage*

-15°C to -25°C/1 year (Do not lower than -25°C)

Formulation

Liquid in PBS containing 50% glycerol, 0.5% BSA and 0.02% sodium azide.

Basic Information

Clonality

Polyclonal

Immunogen Information

Immunogen

The antiserum was produced against synthesized peptide derived from human CAR14. AA range: 291-340

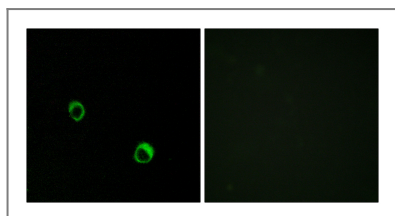
Specificity

CARD 14 Polyclonal Antibody detects endogenous levels of CARD 14 protein.

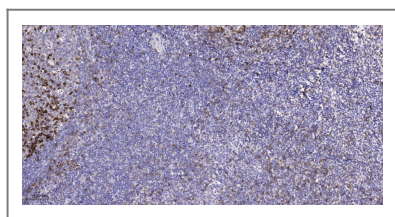
Target Information

Gene name	CARD14		
Protein Name	Caspase recruitment domain-containing protein 14		
	Organism	Gene ID	UniProt ID
	Human	79092 ;	Q9BXL6 ;
	Mouse	170720 ;	Q99KF0 ;
Cellular Localization	[Isoform 1]: Cytoplasm .; [Isoform 2]: Cytoplasm .; [Isoform 3]: Cytoplasm .		
Tissue specificity	Isoform 1 is detected in placenta and epidermal keratinocytes (PubMed:22521418). Isoform 2 is detected in leukocytes and fetal brain (PubMed:22521418).		
Function	Caution:Supposed to contain a SH3 domain which is not detected by PROSITE, Pfam or SMART.,Function:Activates NF-kappa-B via BCL10 and IKK. Stimulates the phosphorylation of BCL10.,similarity:Contains 1 CARD domain.,similarity:Contains 1 guanylate kinase-like domain.,similarity:Contains 1 PDZ (DHR) domain.,subunit:CARD14 and BCL10 bind to each other by CARD-CARD interaction.,tissue specificity:Expressed in placenta. Also detected in HeLa S3 cells, but not in the other cancer cell lines tested.,		

Validation Data



Immunofluorescence analysis of MCF7 cells, using CAR14 Antibody. The picture on the right is blocked with the synthesized peptide.



Immunohistochemical analysis of paraffin-embedded human tonsil. 1, Antibody was diluted at 1:200(4° overnight). 2, Tris-EDTA,pH9.0 was used for antigen retrieval. 3,Secondary antibody was diluted at 1:200(room temperature, 45min).

Contact information

Orders: order.cn@immunoway.com
 Support: support.cn@immunoway.com
 Telephone: 400-8787-807(China)
 Website: <http://www.immunoway.com.cn>
 Address: 2200 Ringwood Ave San Jose, CA 95131 USA



Please scan the QR code
 to access additional
 product information:
CARD 14 Rabbit pAb

