

## Cadherin-24 Rabbit pAb

CatalogNo: YT0600

### Key Features

#### Host Species

- Rabbit

#### Reactivity

- Human, Mouse

#### Applications

- IF, WB, ELISA

#### MW

- 88kD (Calculated)

#### Isotype

- IgG

### Recommended Dilution Ratios

**WB 1:500-2000**

**IF 1:200-1:1000**

**ELISA 1:10000**

**Not yet tested in other applications.**

### Storage

#### Storage\*

-15°C to -25°C/1 year (Do not lower than -25°C)

#### Formulation

Liquid in PBS containing 50% glycerol, 0.5% BSA and 0.02% sodium azide.

### Basic Information

#### Clonality

Polyclonal

### Immunogen Information

#### Immunogen

The antiserum was produced against synthesized peptide derived from human CDH24. AA range: 81-130

#### Specificity

Cadherin-24 Polyclonal Antibody detects endogenous levels of Cadherin-24 protein.

### Target Information

**Gene name** CDH24

**Protein Name** Cadherin-24

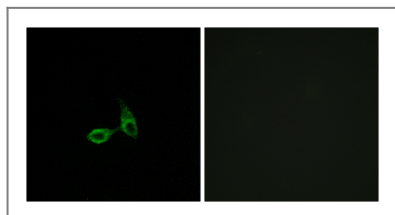
Organism	Gene ID	UniProt ID
Human	<a href="#">64403</a> ;	<a href="#">Q86UP0</a> ;
Mouse	<a href="#">239096</a> ;	<a href="#">Q6PFX6</a> ;

**Cellular Localization** Cell membrane ; Single-pass type I membrane protein .

**Tissue specificity** Blood,Colon,HeLa cells,Placenta,Salivary gland,Testis,Thyroid,

**Function** Function:Cadherins are calcium dependent cell adhesion proteins.,Function:Cadherins are calcium dependent cell adhesion proteins. They preferentially interact with themselves in a homophilic manner in connecting cells; cadherins may thus contribute to the sorting of heterogeneous cell types. Cadherin-24 mediate strong cell-cell adhesion.,similarity:Contains 5 cadherin domains.,subunit:Associates with alpha-, beta- and delta-catenins.,

## | Validation Data



Immunofluorescence analysis of HepG2 cells, using CDH24 Antibody. The picture on the right is blocked with the synthesized peptide.

## | Contact information

Orders: order.cn@immunoway.com  
Support: support.cn@immunoway.com  
Telephone: 400-8787-807(China)  
Website: <http://www.immunoway.com.cn>  
Address: 2200 Ringwood Ave San Jose, CA 95131 USA



Please scan the QR code to access additional product information:  
**Cadherin-24 Rabbit pAb**

For Research Use Only. Not for Use in Diagnostic Procedures.

[Antibody](#) | [ELISA Kits](#) | [Protein](#) | [Reagents](#)