

Cadherin-18 Rabbit pAb

CatalogNo: YT0595

Key Features

Host Species

- Rabbit

Reactivity

- Human, Mouse

Applications

- WB, IHC, IF, ELISA

MW

- 88kD (Observed)

Isotype

- IgG

Recommended Dilution Ratios

WB 1:500-1:2000

IHC 1:100-1:300

IF 1:200-1:1000

ELISA 1:10000

Not yet tested in other applications.

Storage

Storage* -15°C to -25°C/1 year (Do not lower than -25°C)

Formulation Liquid in PBS containing 50% glycerol, 0.5% BSA and 0.02% sodium azide.

Basic Information

Clonality Polyclonal

Immunogen Information

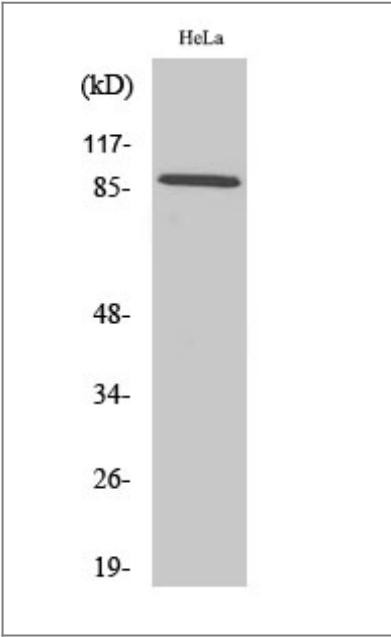
Immunogen The antiserum was produced against synthesized peptide derived from human CDH18. AA range: 101-150

Specificity Cadherin-18 Polyclonal Antibody detects endogenous levels of Cadherin-18 protein.

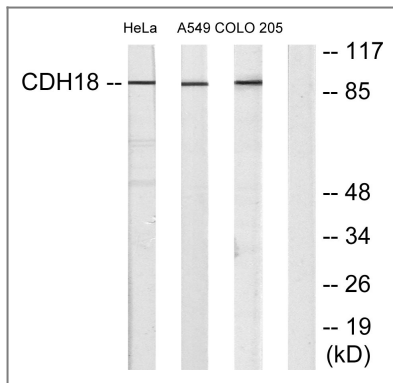
| Target Information

Gene name	CDH18		
Protein Name	Cadherin-18		
	Organism	Gene ID	UniProt ID
	Human	1016 ;	Q13634 ;
Cellular Localization	Cell membrane; Single-pass type I membrane protein.		
Tissue specificity	Brain,Cerebellum,		
Function	Function:Cadherins are calcium dependent cell adhesion proteins. They preferentially interact with themselves in a homophilic manner in connecting cells; cadherins may thus contribute to the sorting of heterogeneous cell types.,similarity:Contains 5 cadherin domains.,		

| Validation Data



Western Blot analysis of various cells using Cadherin-18 Polyclonal Antibody



Western blot analysis of lysates from HeLa, A549, and COLO205 cells, using CDH18 Antibody. The lane on the right is blocked with the synthesized peptide.

Contact information

Orders: order.cn@immunoway.com
 Support: support.cn@immunoway.com
 Telephone: 400-8787-807(China)
 Website: <http://www.immunoway.com.cn>
 Address: 2200 Ringwood Ave San Jose, CA 95131 USA



Please scan the QR code to access additional product information:

Cadherin-18 Rabbit pAb

For Research Use Only. Not for Use in Diagnostic Procedures.

[Antibody](#) | [ELISA Kits](#) | [Protein](#) | [Reagents](#)