

BTF Rabbit pAb

CatalogNo: YT0542

Orthogonal Validated 

Key Features

Host Species

- Rabbit

Reactivity

- Human, Mouse, Rat

Applications

- WB, ELISA

MW

- 106kD (Observed)

Isotype

- IgG

Recommended Dilution Ratios

WB 1:500-1:2000**ELISA 1:10000****Not yet tested in other applications.**

Storage

Storage* -15°C to -25°C/1 year (Do not lower than -25°C)**Formulation** Liquid in PBS containing 50% glycerol, 0.5% BSA and 0.02% sodium azide.

Basic Information

Clonality Polyclonal

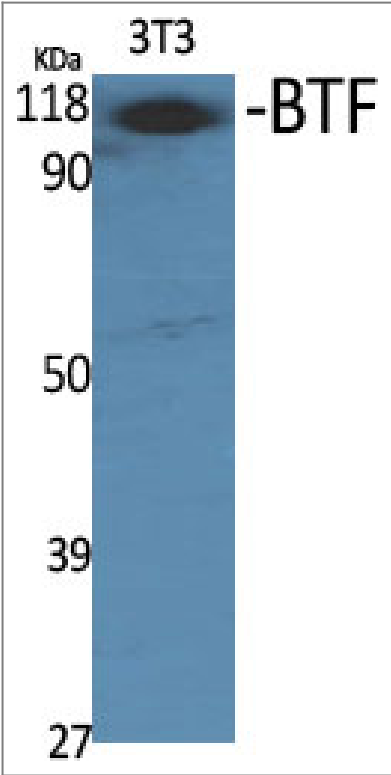
Immunogen Information

Immunogen The antiserum was produced against synthesized peptide derived from human BCLAF1. AA range: 281-330**Specificity** BTF Polyclonal Antibody detects endogenous levels of BTF protein.

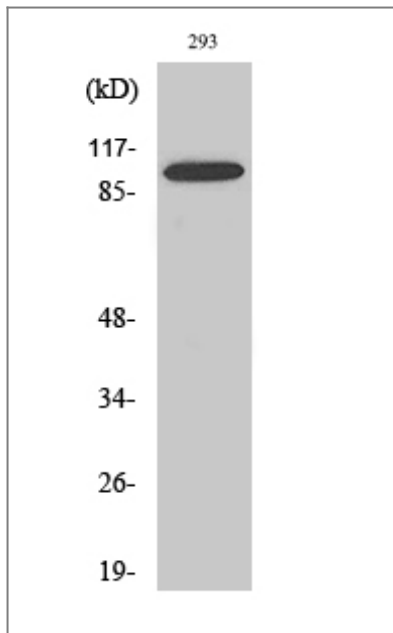
Target Information

Gene name	BCLAF1		
Protein Name	Bcl-2-associated transcription factor 1		
	Organism	Gene ID	UniProt ID
	Human	9774 ;	Q9NYF8 ;
	Mouse	72567 ;	Q8K019 ;
Cellular Localization	Cytoplasm. Nucleus. Nucleus speckle . Nucleus, nucleoplasm .		
Tissue specificity	Ubiquitous.		
Function	Function:Death-promoting transcriptional repressor.,sequence Caution:Contaminating sequence. Potential poly-A sequence.,subunit:Interacts with Bcl-2 related proteins, EMD, with the adenovirus E1B 19 kDa protein and with DNA.,tissue specificity:Ubiquitous.,		

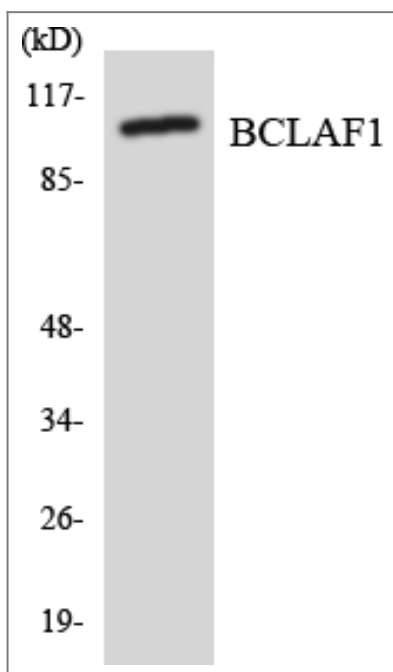
| Validation Data



Western Blot analysis of various cells using BTF Polyclonal Antibody



Western Blot analysis of A549 cells using BTF Polyclonal Antibody



Western blot analysis of the lysates from HeLa cells using BCLAF1 antibody.

Contact information

Orders: order.cn@immunoway.com
 Support: support.cn@immunoway.com
 Telephone: 400-8787-807(China)
 Website: <http://www.immunoway.com.cn>
 Address: 2200 Ringwood Ave San Jose, CA 95131 USA



Please scan the QR code
 to access additional
 product information:
BTF Rabbit pAb