

BS69 Rabbit pAb

CatalogNo: YT0537

Key Features

Host Species

- Rabbit

Reactivity

- Human, Mouse, Rat

Applications

- IHC, IF, ELISA

MW

- 66kD (Calculated)

Isotype

- IgG

Recommended Dilution Ratios

IHC 1:100-1:300

ELISA 1:20000

IF 1:50-200

Storage

Storage* -15°C to -25°C/1 year (Do not lower than -25°C)

Formulation Liquid in PBS containing 50% glycerol, 0.5% BSA and 0.02% sodium azide.

Basic Information

Clonality Polyclonal

Immunogen Information

Immunogen The antiserum was produced against synthesized peptide derived from human ZMY11. AA range: 111-160

Specificity BS69 Polyclonal Antibody detects endogenous levels of BS69 protein.

Target Information

Gene name ZMYND11

Protein Name Zinc finger MYND domain-containing protein 11

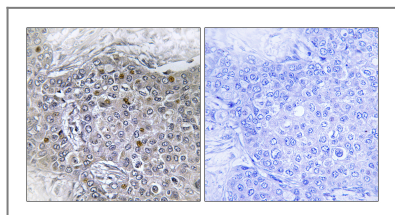
Organism	Gene ID	UniProt ID
Human	10771 ;	Q15326 ;
Mouse		Q8R5C8 ;

Cellular Localization Nucleus . Chromosome . Associates with chromatin and mitotic chromosomes. .

Tissue specificity Ubiquitous.

Function Function: Binds to the transactivation domain of the adenovirus type 5 E1A 32 kDa protein (289R) and inhibits its transactivating activity. May act as tumor suppressor through suppression of adenovirus replication., PTM: Phosphorylated upon DNA damage, probably by ATM or ATR., similarity: Contains 1 bromo domain., similarity: Contains 1 MYND-type zinc finger., similarity: Contains 1 PHD-type zinc finger., similarity: Contains 1 PWWP domain.,

Validation Data



Immunohistochemistry analysis of paraffin-embedded human breast carcinoma tissue, using ZMY11 Antibody. The picture on the right is blocked with the synthesized peptide.

Contact information

Orders: order.cn@immunoway.com
Support: support.cn@immunoway.com
Telephone: 400-8787-807(China)
Website: <http://www.immunoway.com.cn>
Address: 2200 Ringwood Ave San Jose, CA 95131 USA



Please scan the QR code to access additional product information:
BS69 Rabbit pAb

For Research Use Only. Not for Use in Diagnostic Procedures.

[Antibody](#) | [ELISA Kits](#) | [Protein](#) | [Reagents](#)