

BRS-3 Rabbit pAb

CatalogNo: YT0533

Key Features

Host Species

- Rabbit

Reactivity

- Human,Rat,Mouse,

Applications

- WB,IF,ELISA

MW

- 44kD (Observed)

Isotype

- IgG

Recommended Dilution Ratios

WB 1:500-1:2000**IF 1:200-1:1000****ELISA 1:40000****Not yet tested in other applications.**

Storage

Storage*

-15°C to -25°C/1 year(Do not lower than -25°C)

Formulation

Liquid in PBS containing 50% glycerol, 0.5% BSA and 0.02% sodium azide.

Basic Information

Clonality

Polyclonal

Immunogen Information

Immunogen

The antiserum was produced against synthesized peptide derived from human BRS3. AA range:161-210

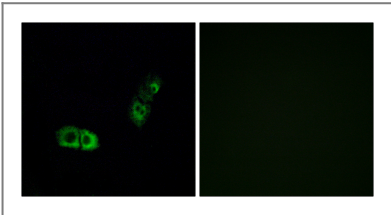
Specificity

BRS-3 Polyclonal Antibody detects endogenous levels of BRS-3 protein.

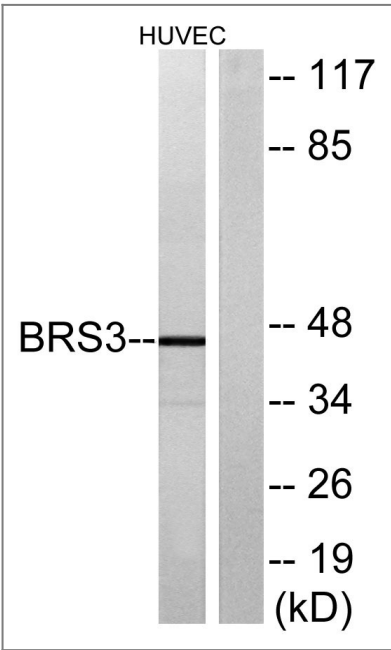
Target Information

Gene name	BRS3		
Protein Name	Bombesin receptor subtype-3		
	Organism	Gene ID	UniProt ID
	Human	680 ;	P32247 ;
	Mouse		O54798 ;
Cellular Localization	Cell membrane; Multi-pass membrane protein.		
Tissue specificity	In germ cells in testis. Lung carcinoma cells.		
Function	Function:Role in sperm cell division, maturation, or function. This receptor mediates its action by association with G proteins that activate a phosphatidylinositol-calcium second messenger system.,similarity:Belongs to the G-protein coupled receptor 1 family.,tissue specificity:In germ cells in testis. Lung carcinoma cells.,		

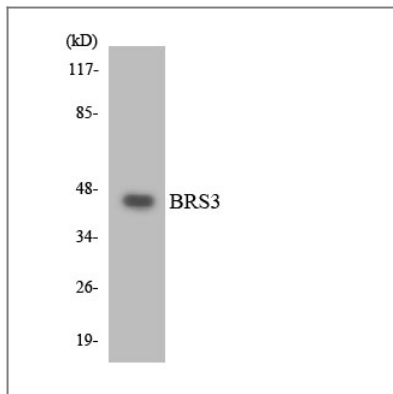
| Validation Data



Immunofluorescence analysis of A549 cells, using BRS3 Antibody. The picture on the right is blocked with the synthesized peptide.



Western blot analysis of lysates from HUVEC cells, using BRS3 Antibody. The lane on the right is blocked with the synthesized peptide.



Western blot analysis of the lysates from HT-29 cells using BRS3 antibody.

Contact information

Orders: order.cn@immunoway.com
Support: support.cn@immunoway.com
Telephone: 400-8787-807(China)
Website: <http://www.immunoway.com.cn>
Address: 2200 Ringwood Ave San Jose, CA 95131 USA



Please scan the QR code
to access additional
product information:
BRS-3 Rabbit pAb

For Research Use Only. Not for Use in Diagnostic Procedures.

[Antibody](#) | [ELISA Kits](#) | [Protein](#) | [Reagents](#)