

BRAF35 Rabbit pAb

CatalogNo: YT0515

Key Features

Host Species

- Rabbit

Reactivity

- Human, Mouse,

Applications

- WB, IHC, IF, ELISA

MW

- 36kD (Observed)

Isotype

- IgG

Recommended Dilution Ratios

WB 1:500-1:2000

IHC 1:100-1:300

IF 1:200-1:1000

ELISA 1:20000

Not yet tested in other applications.

Storage

Storage* -15°C to -25°C/1 year (Do not lower than -25°C)

Formulation Liquid in PBS containing 50% glycerol, 0.5% BSA and 0.02% sodium azide.

Basic Information

Clonality Polyclonal

Immunogen Information

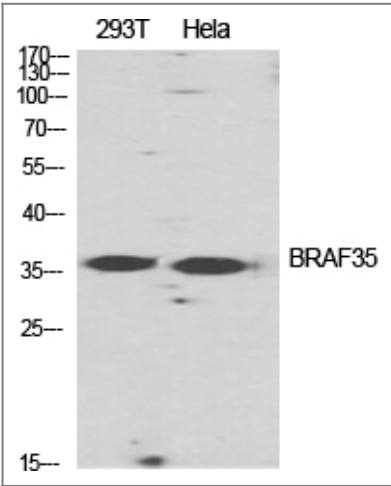
Immunogen The antiserum was produced against synthesized peptide derived from human HMG20B. AA range:1-50

Specificity BRAF35 Polyclonal Antibody detects endogenous levels of BRAF35 protein.

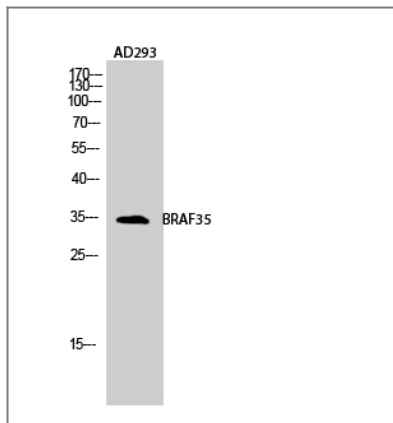
Target Information

Gene name	HMG20B		
Protein Name	SWI/SNF-related matrix-associated actin-dependent regulator of chromatin subfamily E member 1-related		
	Organism	Gene ID	UniProt ID
	Human	10362 ;	Q9P0W2 ;
	Mouse		Q9Z104 ;
Cellular Localization	Nucleus. Chromosome. Localized to condensed chromosomes in mitosis in conjunction with BRCA2.		
Tissue specificity	Ubiquitously expressed in adult tissues.		
Function	Function:Required for correct progression through G2 phase of the cell cycle and entry into mitosis. Required for RCOR1/CoREST mediated repression of neuronal specific gene promoters.,sequence Caution:Translation N-terminally extended.,similarity:Contains 1 HMG box DNA-binding domain.,subcellular location:Localized to condensed chromosomes in mitosis in conjunction with BRCA2.,subunit:Component of a BHC histone deacetylase complex that contains HDAC1, HDAC2, HMG20B/BRAF35, AOF2/LSD1, RCOR1/CoREST and PHF21A/BHC80. The BHC complex may also contain ZMYM2, ZNF217, ZMYM3, GSE1 and GTF2I. Interacts with the BRCA2 tumor suppressor protein.,tissue specificity:Ubiquitously expressed in adult tissues.,		

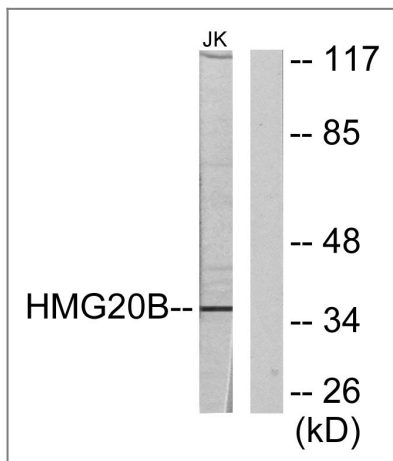
Validation Data



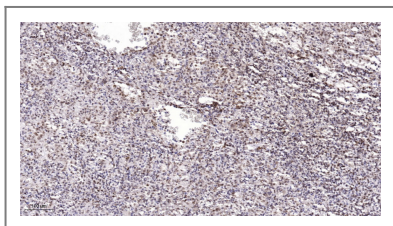
Western Blot analysis of various cells using BRAF35 Polyclonal Antibody diluted at 1:2000 cells nucleus extracted by Minute TM Cytoplasmic and Nuclear Fractionation kit (SC-003, Invent biotech, MN, USA).



Western Blot analysis of AD293 cells using BRAF35 Polyclonal Antibody diluted at 1:2000 cells nucleus extracted by Minute TM Cytoplasmic and Nuclear Fractionation kit (SC-003, Invent biotech, MN, USA).



Western blot analysis of lysates from Jurkat cells, using HMG20B Antibody. The lane on the right is blocked with the synthesized peptide.



Immunohistochemical analysis of paraffin-embedded human spleen. 1, Antibody was diluted at 1:200 (4° overnight). 2, Tris-EDTA, pH 9.0 was used for antigen retrieval. 3, Secondary antibody was diluted at 1:200 (room temperature, 45 min).

Contact information

Orders: order.cn@immunoway.com
 Support: support.cn@immunoway.com
 Telephone: 400-8787-807 (China)
 Website: <http://www.immunoway.com.cn>
 Address: 2200 Ringwood Ave San Jose, CA 95131 USA



Please scan the QR code to access additional product information:
BRAF35 Rabbit pAb