

Bradykinin B1 R Rabbit pAb

CatalogNo: YT0514

Key Features

Host Species

- Rabbit

Reactivity

- Human, Mouse, Rat

Applications

- WB, IF, ELISA

MW

- 40kD (Observed)

Isotype

- IgG

Storage

Storage* -15°C to -25°C/1 year (Do not lower than -25°C)

Formulation Liquid in PBS containing 50% glycerol, 0.5% BSA and 0.02% sodium azide.

Recommended Dilution Ratios

WB 1:500-1:2000

IF 1:200-1:1000

ELISA 1:5000

Not yet tested in other applications.

Basic Information

Clonality Polyclonal

Immunogen Information

Immunogen The antiserum was produced against synthesized peptide derived from human BDKRB1. AA range:201-250

Specificity Bradykinin B1 R Polyclonal Antibody detects endogenous levels of Bradykinin B1 R protein.

Target Information

Gene name BDKRB1

Protein Name B1 bradykinin receptor

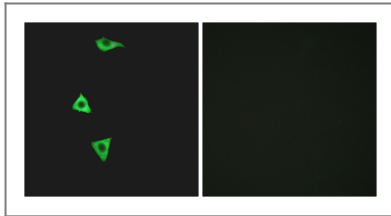
Organism	Gene ID	UniProt ID
Human	623 ;	P46663 ;
Mouse		Q61125 ;

Cellular Localization Cell membrane; Multi-pass membrane protein.

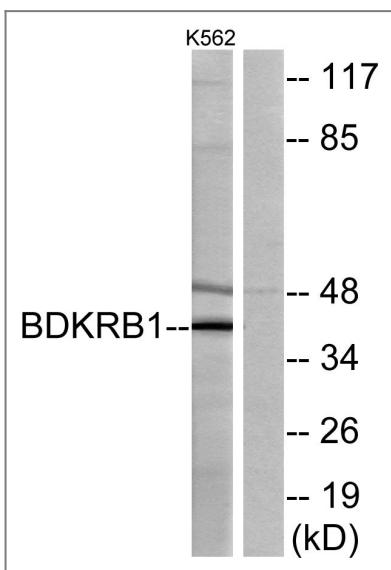
Tissue specificity Lung, Skin,

Function Function: This is a receptor for bradykinin. Could be a factor in chronic pain and inflammation., online information: Bradykinin receptor entry, similarity: Belongs to the G-protein coupled receptor 1 family.,

Validation Data



Immunofluorescence analysis of LOVO cells, using BDKRB1 Antibody. The picture on the right is blocked with the synthesized peptide.



Western blot analysis of lysates from K562 cells, using BDKRB1 Antibody. The lane on the right is blocked with the synthesized peptide.

Contact information

Orders: order.cn@immunoway.com
Support: support.cn@immunoway.com
Telephone: 400-8787-807(China)
Website: http://www.immunoway.com.cn
Address: 2200 Ringwood Ave San Jose, CA 95131 USA



Please scan the QR code
to access additional
product information:
**Bradykinin B1 R
Rabbit pAb**

For Research Use Only. Not for Use in Diagnostic Procedures.

[Antibody](#) | [ELISA Kits](#) | [Protein](#) | [Reagents](#)