

## BET5 Rabbit pAb

CatalogNo: YT0487

### Key Features

#### Host Species

- Rabbit

#### Reactivity

- Human, Mouse, Rat

#### Applications

- IHC, IF, ELISA

#### MW

- 17kD (Calculated)

#### Isotype

- IgG

### Storage

**Storage\*** -15°C to -25°C/1 year (Do not lower than -25°C)

**Formulation** Liquid in PBS containing 50% glycerol, 0.5% BSA and 0.02% sodium azide.

### Recommended Dilution Ratios

**IHC 1:100-1:300**

**ELISA 1:5000**

**IF 1:50-200**

### Basic Information

**Clonality** Polyclonal

### Immunogen Information

**Immunogen** The antiserum was produced against synthesized peptide derived from human TRAPPC1. AA range:10-59

**Specificity** BET5 Polyclonal Antibody detects endogenous levels of BET5 protein.

### Target Information

**Gene name** TRAPPC1

**Protein Name** Trafficking protein particle complex subunit 1

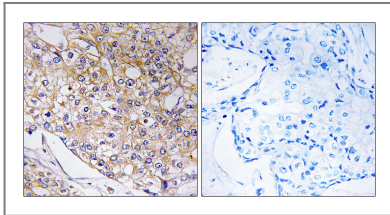
Organism	Gene ID	UniProt ID
Human	<a href="#">58485;</a>	<a href="#">Q9Y5R8;</a>
Mouse	<a href="#">245828;</a>	<a href="#">Q5NCF2;</a>
Rat	<a href="#">287427;</a>	<a href="#">Q2KMM2;</a>

**Cellular Localization** Golgi apparatus, cis-Golgi network . Endoplasmic reticulum .

**Tissue specificity** Uterus,

**Function** Function:May play a role in vesicular transport from endoplasmic reticulum to Golgi.,similarity:Belongs to the TRAPP small subunits family. BET5 subfamily.,subunit:Part of the multisubunit TRAPP (transport protein particle) complex.,

## Validation Data



Immunohistochemistry analysis of paraffin-embedded human breast carcinoma tissue, using TRAPPC1 Antibody. The picture on the right is blocked with the synthesized peptide.

## Contact information

Orders: [order.cn@immunoway.com](mailto:order.cn@immunoway.com)  
Support: [support.cn@immunoway.com](mailto:support.cn@immunoway.com)  
Telephone: 400-8787-807(China)  
Website: <http://www.immunoway.com.cn>  
Address: 2200 Ringwood Ave San Jose, CA 95131 USA



Please scan the QR code to access additional product information:  
**BET5 Rabbit pAb**

For Research Use Only. Not for Use in Diagnostic Procedures.

[Antibody](#) | [ELISA Kits](#) | [Protein](#) | [Reagents](#)