

## Bcl-w Rabbit pAb

CatalogNo: YT0476

Orthogonal Validated 

### Key Features

#### Host Species

- Rabbit

#### Reactivity

- Human, Mouse, Rat

#### Applications

- WB, IHC, IF, ELISA

#### MW

- 25kD (Observed)

#### Isotype

- IgG

### Recommended Dilution Ratios

**WB 1:500-1:2000****IHC 1:100-1:300****IF 1:200-1:1000****ELISA 1:10000****Not yet tested in other applications.**

### Storage

#### Storage\*

-15°C to -25°C/1 year (Do not lower than -25°C)

#### Formulation

Liquid in PBS containing 50% glycerol, 0.5% BSA and 0.02% sodium azide.

### Basic Information

#### Clonality

Polyclonal

### Immunogen Information

#### Immunogen

The antiserum was produced against synthesized peptide derived from human BCLW. AA range: 131-180

#### Specificity

Bcl-w Polyclonal Antibody detects endogenous levels of Bcl-w protein.

---

## | Target Information

**Gene name** BCL2L2

**Protein Name** Bcl-2-like protein 2

Organism	Gene ID	UniProt ID
Human	<a href="#">599</a> ;	<a href="#">Q92843</a> ;
Mouse	<a href="#">12050</a> ;	<a href="#">P70345</a> ;

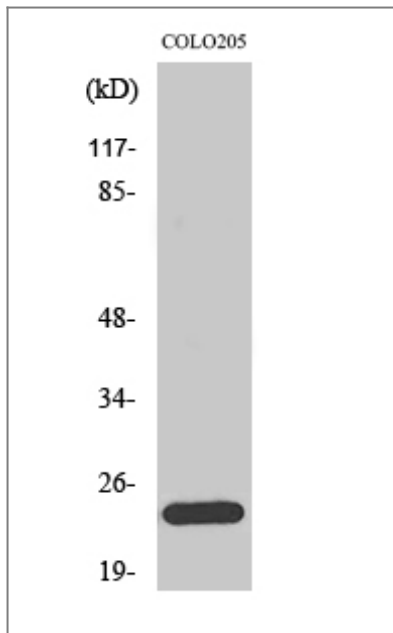
**Cellular Localization** Mitochondrion membrane ; Peripheral membrane protein . Loosely associated with the mitochondrial membrane in healthy cells. During apoptosis, tightly bound to the membrane.

**Tissue specificity** Expressed (at protein level) in a wide range of tissues with highest levels in brain, spinal cord, testis, pancreas, heart, spleen and mammary glands. Moderate levels found in thymus, ovary and small intestine. Not detected in salivary gland, muscle or liver. Also expressed in cell lines of myeloid, fibroblast and epithelial origin. Not detected in most lymphoid cell lines.

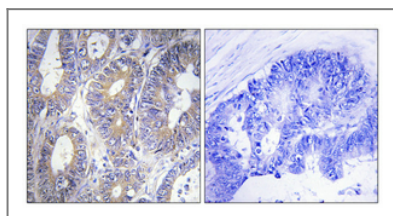
**Function** Domain:The BH1 and BH2 motifs form a hydrophobic groove which acts as a docking site for the BH3 domain of some pro-apoptotic proteins. The C-terminal residues of BCL2L2 fold into the BH3-binding cleft and modulate pro-survival activity by regulating ligand access. When BH3 domain-containing proteins bind, they displace the C-terminus, allowing its insertion into the membrane and neutralizing the pro-survival activity of BCL2L2.,Domain:The BH4 motif seems to be involved in the anti-apoptotic function.,Function:Promotes cell survival. Blocks dexamethasone-induced apoptosis. Mediates survival of postmitotic Sertoli cells by suppressing death-promoting activity of BAX.,similarity:Belongs to the Bcl-2 family.,subcellular location:Loosely associated with the mitochondrial membrane in healthy cells. During apoptosis, tightly bound to the membrane.,tissue specificity:Expressed (at protein level) in a wide range of tissues with highest levels in brain, spinal cord, testis, pancreas, heart, spleen and mammary glands. Moderate levels found in thymus, ovary and small intestine. Not detected in salivary gland, muscle or liver. Also expressed in cell lines of myeloid, fibroblast and epithelial origin. Not detected in most lymphoid cell lines.,

---

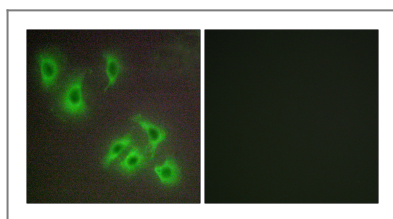
## | Validation Data



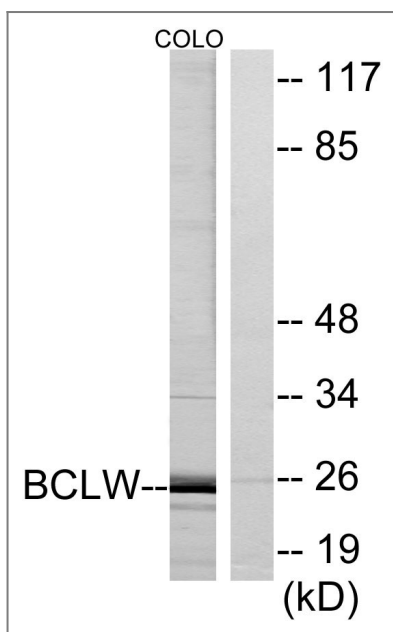
Western Blot analysis of various cells using Bcl-w Polyclonal Antibody diluted at 1:2000



Immunohistochemical analysis of paraffin-embedded Human colon cancer. Antibody was diluted at 1:100(4° overnight). High-pressure and temperature Tris-EDTA,pH8.0 was used for antigen retrieval. Negative contrl (right) obtained from antibody was pre-absorbed by immunogen peptide.



Immunofluorescence analysis of HepG2 cells, using BCLW Antibody. The picture on the right is blocked with the synthesized peptide.



Western blot analysis of lysates from COLO cells, using BCLW Antibody. The lane on the right is blocked with the synthesized peptide.

Orders: order.cn@immunoway.com  
Support: support.cn@immunoway.com  
Telephone: 400-8787-807(China)  
Website: <http://www.immunoway.com.cn>  
Address: 2200 Ringwood Ave San Jose, CA 95131 USA



Please scan the QR code  
to access additional  
product information:  
**Bcl-w Rabbit pAb**

---

For Research Use Only. Not for Use in Diagnostic Procedures.

[Antibody](#) | [ELISA Kits](#) | [Protein](#) | [Reagents](#)