

BCAS2 Rabbit pAb

CatalogNo: YT0464

| Key Features

Host Species

- Rabbit

Reactivity

- Human, Mouse, Rat, Monkey

Applications

- WB, ELISA

MW

- 27kD (Observed)

Isotype

- IgG

| Recommended Dilution Ratios

WB 1:500-1:2000

ELISA 1:5000

Not yet tested in other applications.

| Storage

Storage*

-15°C to -25°C/1 year (Do not lower than -25°C)

Formulation

Liquid in PBS containing 50% glycerol, 0.5% BSA and 0.02% sodium azide.

| Basic Information

Clonality

Polyclonal

| Immunogen Information

Immunogen

The antiserum was produced against synthesized peptide derived from human BCAS2. AA range: 176-225

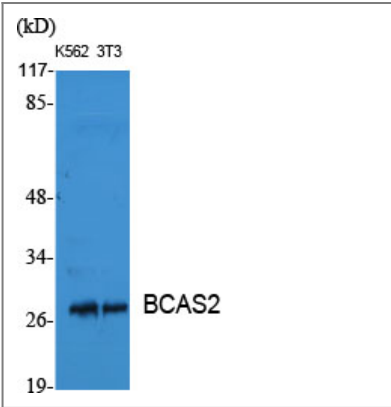
Specificity

BCAS2 Polyclonal Antibody detects endogenous levels of BCAS2 protein.

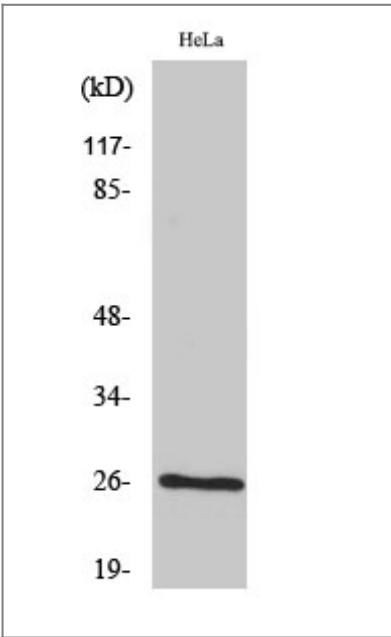
| Target Information

Gene name	BCAS2		
Protein Name	Pre-mRNA-splicing factor SPF27		
	Organism	Gene ID	UniProt ID
	Human	10286;	O75934;
	Mouse	68183;	Q9D287;
Cellular Localization	Nucleus . Nucleus, nucleolus .		
Tissue specificity	Ubiquitously expressed.		
Function	Function:Involved in mRNA splicing.,similarity:Belongs to the SPF27 family.,subunit:Associated with the spliceosome.,tissue specificity:Ubiquitously expressed.,		

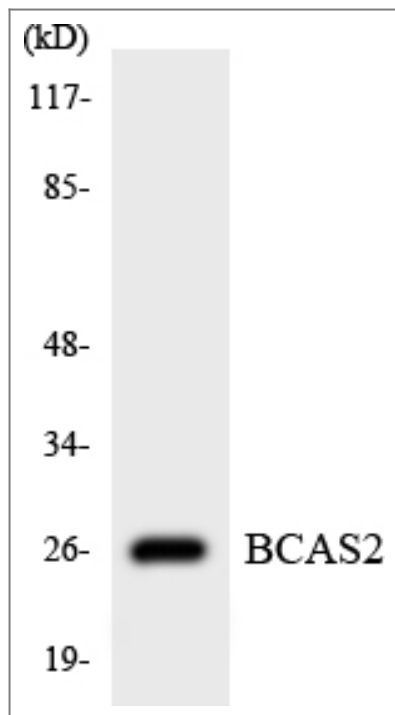
Validation Data



Western Blot analysis of various cells using BCAS2 Polyclonal Antibody diluted at 1:1000 cells nucleus extracted by Minute TM Cytoplasmic and Nuclear Fractionation kit (SC-003,Inventbiotech,MN,USA).



Western Blot analysis of COS7 cells using BCAS2 Polyclonal Antibody diluted at 1:1000 cells nucleus extracted by Minute TM Cytoplasmic and Nuclear Fractionation kit (SC-003,Inventbiotech,MN,USA).



Western blot analysis of the lysates from HUVEC cells using BCAS2 antibody.

Contact information

Orders: order.cn@immunoway.com
Support: support.cn@immunoway.com
Telephone: 400-8787-807(China)
Website: <http://www.immunoway.com.cn>
Address: 2200 Ringwood Ave San Jose, CA 95131 USA



Please scan the QR code
to access additional
product information:
BCAS2 Rabbit pAb

For Research Use Only. Not for Use in Diagnostic Procedures.

[Antibody](#) | [ELISA Kits](#) | [Protein](#) | [Reagents](#)