

## Bc10 Rabbit pAb

CatalogNo: YT0461

### Key Features

#### Host Species

- Rabbit

#### Reactivity

- Human, Mouse, Rat

#### Applications

- IF, ELISA

#### MW

- 10kD (Calculated)

#### Isotype

- IgG

### Recommended Dilution Ratios

IF 1:200-1:1000

ELISA 1:40000

Not yet tested in other applications

### Storage

#### Storage\*

-15°C to -25°C/1 year (Do not lower than -25°C)

#### Formulation

Liquid in PBS containing 50% glycerol, 0.5% BSA and 0.02% sodium azide.

### Basic Information

#### Clonality

Polyclonal

### Immunogen Information

#### Immunogen

The antiserum was produced against synthesized peptide derived from human BLCAP. AA range: 38-87

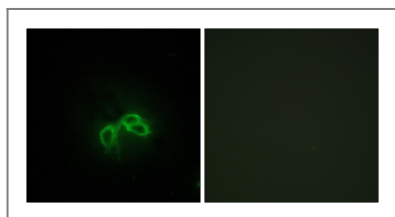
#### Specificity

Bc10 Polyclonal Antibody detects endogenous levels of Bc10 protein.

### Target Information

<b>Gene name</b>	BLCAP		
<b>Protein Name</b>	Bladder cancer-associated protein		
	<b>Organism</b>	<b>Gene ID</b>	<b>UniProt ID</b>
	Human	<a href="#">10904</a> ;	<a href="#">P62952</a> ;
	Mouse	<a href="#">53619</a> ;	<a href="#">P62951</a> ;
	Rat	<a href="#">171113</a> ;	<a href="#">P62950</a> ;
<b>Cellular Localization</b>	Membrane ; Multi-pass membrane protein .		
<b>Tissue specificity</b>	Ubiquitous. Expressed in cervical tissues. Down-regulated in bladder invasive carcinoma, renal cell carcinoma and in primary cervical carcinoma.		
<b>Function</b>	similarity:Belongs to the BLCAP family.,tissue specificity:Expressed in cervical tissues. Down-regulated during bladder cancer progression and in most cervical carcinomas.,		

## Validation Data



Immunofluorescence analysis of NIH/3T3 cells, using BLCAP Antibody. The picture on the right is blocked with the synthesized peptide.

## Contact information

Orders: [order.cn@immunoway.com](mailto:order.cn@immunoway.com)  
 Support: [support.cn@immunoway.com](mailto:support.cn@immunoway.com)  
 Telephone: 400-8787-807(China)  
 Website: <http://www.immunoway.com.cn>  
 Address: 2200 Ringwood Ave San Jose, CA 95131 USA



Please scan the QR code to access additional product information:  
**Bc10 Rabbit pAb**

For Research Use Only. Not for Use in Diagnostic Procedures.

[Antibody](#) | [ELISA Kits](#) | [Protein](#) | [Reagents](#)