

## BAGE2 Rabbit pAb

CatalogNo: YT0442

### Key Features

#### Host Species

- Rabbit

#### Reactivity

- Human

#### Applications

- IHC,IF,ELISA

#### MW

- 12kD (Calculated)

#### Isotype

- IgG

### Storage

**Storage\*** -15°C to -25°C/1 year (Do not lower than -25°C)

**Formulation** Liquid in PBS containing 50% glycerol, 0.5% BSA and 0.02% sodium azide.

### Recommended Dilution Ratios

**IHC 1:100-1:300**

**ELISA 1:10000**

**IF 1:50-200**

### Basic Information

**Clonality** Polyclonal

### Immunogen Information

**Immunogen** The antiserum was produced against synthesized peptide derived from human BAGE2. AA range:41-90

**Specificity** BAGE2 Polyclonal Antibody detects endogenous levels of BAGE2 protein.

### Target Information

**Gene name** BAGE2

**Protein Name** B melanoma antigen 2

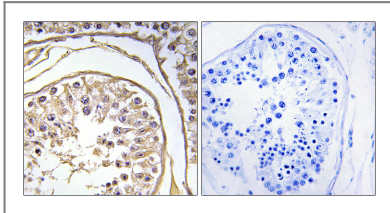
| Organism | Gene ID                 | UniProt ID               |
|----------|-------------------------|--------------------------|
| Human    | <a href="#">85319</a> ; | <a href="#">Q86Y30</a> ; |

**Cellular Localization** Secreted .

**Tissue specificity** Not expressed in normal tissues except in testis. Expressed in 22% of melanomas , in bladder and lung carcinomas.

**Function** Function:Unknown. Candidate gene encoding tumor antigens. ,miscellaneous:The ancestral BAGE gene was generated by juxtacentromeric reshuffling of the MLL3 gene. The BAGE family was expanded by juxtacentromeric movement and/or acrocentric exchanges. BAGE family is composed of expressed genes that map to the juxtacentromeric regions of chromosomes 13 and 21 and of unexpressed gene fragments that scattered in the juxtacentromeric regions of several chromosomes , including chromosomes 9 , 13 , 18 and 21. ,similarity:Belongs to the BAGE family. ,tissue specificity:Not expressed in normal tissues except in testis. Expressed in 22% of melanomas , in bladder and lung carcinomas. ,tissue specificity:Not expressed in normal tissues except in testis. Expressed in melanoma , bladder and lung carcinomas. ,

## Validation Data



Immunohistochemistry analysis of paraffin-embedded human testis, using BAGE2 Antibody. The picture on the right is blocked with the synthesized peptide.

## Contact information

Orders: [order.cn@immunoway.com](mailto:order.cn@immunoway.com)  
Support: [support.cn@immunoway.com](mailto:support.cn@immunoway.com)  
Telephone: 400-8787-807(China)  
Website: <http://www.immunoway.com.cn>  
Address: 2200 Ringwood Ave San Jose, CA 95131 USA



Please scan the QR code to access additional product information:  
**BAGE2 Rabbit pAb**