

## ATPBD3 Rabbit pAb

CatalogNo: YT0414

### Key Features

#### Host Species

- Rabbit

#### Reactivity

- Human,Rat,Mouse,

#### Applications

- WB,ELISA

#### MW

- 36kD (Observed)

#### Isotype

- IgG

### Recommended Dilution Ratios

**WB 1:500-1:2000**

**ELISA 1:20000**

**Not yet tested in other applications.**

### Storage

**Storage\*** -15°C to -25°C/1 year(Do not lower than -25°C)

**Formulation** Liquid in PBS containing 50% glycerol, 0.5% BSA and 0.02% sodium azide.

### Basic Information

**Clonality** Polyclonal

### Immunogen Information

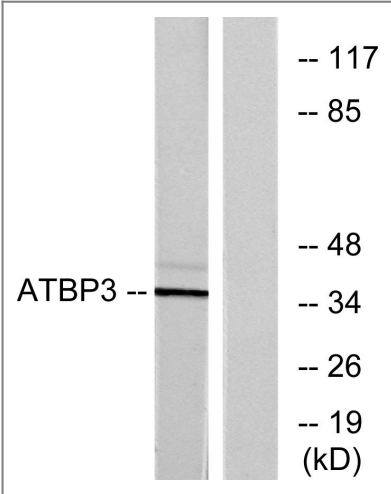
**Immunogen** The antiserum was produced against synthesized peptide derived from human ATPBD3. AA range:291-340

**Specificity** ATPBD3 Polyclonal Antibody detects endogenous levels of ATPBD3 protein.

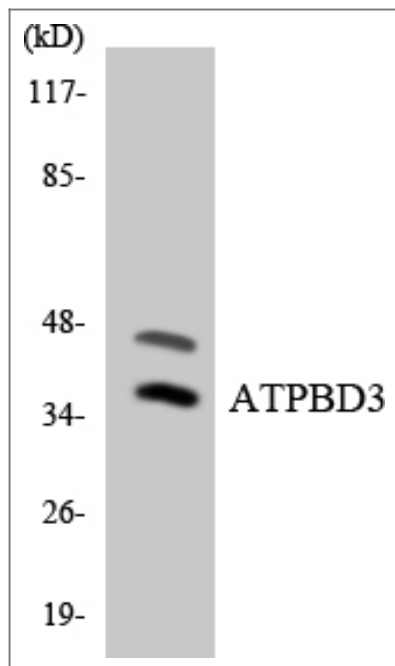
### Target Information

Gene name	CTU1		
Protein Name	Cytoplasmic tRNA 2-thiolation protein 1		
	Organism	Gene ID	UniProt ID
	Human	<a href="#">90353</a> ;	<a href="#">Q7Z7A3</a> ;
	Mouse		<a href="#">Q99J10</a> ;
Cellular Localization	Cytoplasm.		
Tissue specificity	Brain,Epithelium,Teratocarcinoma,		
Function	Function:Plays a central role in 2-thiolation of mcm(5)S(2)U at tRNA wobble positions of tRNA(Lys), tRNA(Glu) and tRNA(Gln). Directly binds tRNAs and probably acts by catalyzing adenylation of tRNAs, an intermediate required for 2-thiolation. It is unclear whether it acts as a sulfurtransferase that transfers sulfur from thiocarboxylated URM1 onto the uridine of tRNAs at wobble position.,pathway:tRNA modification; 5-methoxycarbonylmethyl-2-thiouridine-tRNA biosynthesis.,similarity:Belongs to the ttcA family. CTU1/NCS6/ATPBD3 subfamily.,subunit:Component of a complex at least composed of URM1, CTU2/NCS2 and ATPBD3/NCS6. May for a heterodimer with CTU2/NCS2.,		

Validation Data



Western blot analysis of lysates from LOVO cells, using ATPBD3 Antibody. The lane on the right is blocked with the synthesized peptide.



Western blot analysis of the lysates from 293 cells using ATPBD3 antibody.

## Contact information

Orders: [order.cn@immunoway.com](mailto:order.cn@immunoway.com)  
Support: [support.cn@immunoway.com](mailto:support.cn@immunoway.com)  
Telephone: 400-8787-807(China)  
Website: <http://www.immunoway.com.cn>  
Address: 2200 Ringwood Ave San Jose, CA 95131 USA



Please scan the QR code  
to access additional  
product information:  
**ATPBD3 Rabbit pAb**

For Research Use Only. Not for Use in Diagnostic Procedures.

[Antibody](#) | [ELISA Kits](#) | [Protein](#) | [Reagents](#)