

## Atg4D Rabbit pAb

CatalogNo: YT0396

### Key Features

#### Host Species

- Rabbit

#### Reactivity

- Human, Mouse

#### Applications

- WB, IHC, IF, ELISA

#### MW

- 45kD (Observed)

#### Isotype

- IgG

### Storage

**Storage\*** -15°C to -25°C/1 year (Do not lower than -25°C)

**Formulation** Liquid in PBS containing 50% glycerol, 0.5% BSA and 0.02% sodium azide.

### Recommended Dilution Ratios

**WB 1:500-1:2000**

**IHC 1:100-1:300**

**ELISA 1:5000**

**IF 1:50-200**

### Basic Information

**Clonality** Polyclonal

### Immunogen Information

**Immunogen** Synthesized peptide derived from the Internal region of human Atg4D.. AA range:144-214

**Specificity** Atg4D Polyclonal Antibody detects endogenous levels of Atg4D protein.

### Target Information

**Gene name** ATG4D

**Protein Name** Cysteine protease ATG4D

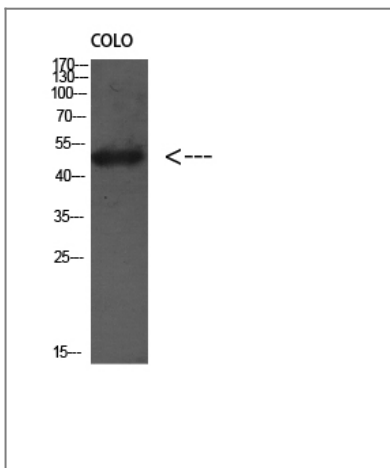
Organism	Gene ID	UniProt ID
Human	<a href="#">84971</a> ;	<a href="#">Q86TL0</a> ;
Mouse		<a href="#">Q8BGV9</a> ;

**Cellular Localization** [Cysteine protease ATG4D]: Cytoplasm .; [Cysteine protease ATG4D, mitochondrial]: Cytoplasm . Mitochondrion matrix . Imported into mitochondrial matrix after cleavage by CASP3 during oxidative stress and cell death. .

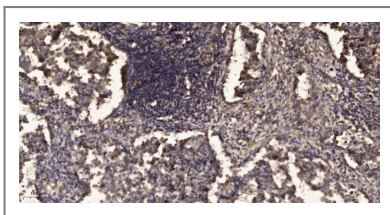
**Tissue specificity** Widely expressed in testis.

**Function** enzyme regulation:Inhibited by N-ethylmaleimide.,Function:Cysteine protease required for autophagy, which cleaves the C-terminal part of either MAP1LC3, GABARAPL2 or GABARAP, allowing the liberation of form I. A subpopulation of form I is subsequently converted to a smaller form (form II). Form II, with a revealed C-terminal glycine, is considered to be the phosphatidylethanolamine (PE)-conjugated form, and has the capacity for the binding to autophagosomes.,similarity:Belongs to the peptidase C54 family.,tissue specificity:Mainly expressed in skeletal muscle and, to a lower extent, in testis.,

## Validation Data



Western Blot analysis of Colo using Antibody diluted at 1:1000. Secondary antibody(catalog#:RS0002) was diluted at 1:20000



Immunohistochemical analysis of paraffin-embedded human Squamous cell carcinoma of lung. 1, Antibody was diluted at 1:200(4° overnight). 2, Tris-EDTA,pH9.0 was used for antigen retrieval. 3,Secondary antibody was diluted at 1:200(room temperature, 45min).

## Contact information

Orders: order.cn@immunoway.com  
Support: support.cn@immunoway.com  
Telephone: 400-8787-807(China)  
Website: http://www.immunoway.com.cn  
Address: 2200 Ringwood Ave San Jose, CA 95131 USA



Please scan the QR code  
to access additional  
product information:  
**Atg4D Rabbit pAb**

---

For Research Use Only. Not for Use in Diagnostic Procedures.

[Antibody](#) | [ELISA Kits](#) | [Protein](#) | [Reagents](#)