

AR- β 3 Rabbit pAb

CatalogNo: YT0363

Key Features

Host Species

- Rabbit

Reactivity

- Human, Mouse, Rat

Applications

- WB IF, ELISA

MW

- 36kD (Observed)

Isotype

- IgG

Recommended Dilution Ratios

WB 1:500-2000

IF 1:100-300

ELISA 1:5000-20000

Not yet tested in other applications.

Storage

Storage*

-15°C to -25°C/1 year (Do not lower than -25°C)

Formulation

Liquid in PBS containing 50% glycerol, 0.5% BSA and 0.02% sodium azide.

Basic Information

Clonality

Polyclonal

Immunogen Information

Immunogen

The antiserum was produced against synthesized peptide derived from human ADRB3. AA range: 250-299

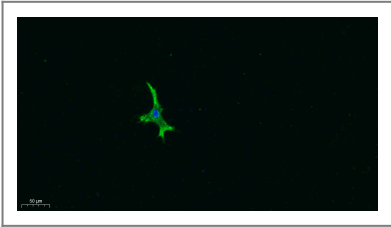
Specificity

AR- β 3 Polyclonal Antibody detects endogenous levels of AR- β 3 protein.

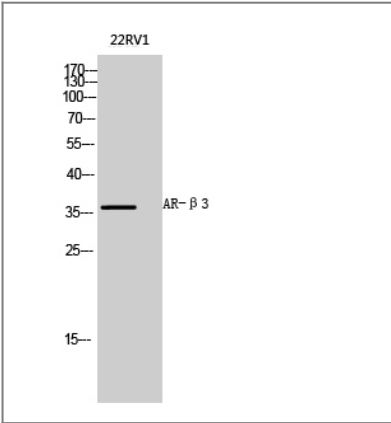
Target Information

Gene name	ADRB3		
Protein Name	Beta-3 adrenergic receptor		
	Organism	Gene ID	UniProt ID
	Human	155 ;	P13945 ;
	Mouse	11556 ;	P25962 ;
	Rat	25645 ;	P26255 ;
Cellular Localization	Cell membrane; Multi-pass membrane protein.		
Tissue specificity	Expressed mainly in adipose tissues.		
Function	Function:Beta-adrenergic receptors mediate the catecholamine-induced activation of adenylate cyclase through the action of G proteins. Beta-3 is involved in the regulation of lipolysis and thermogenesis.,polymorphism:The variant Arg-64 seems to be associated with weight gain (obesity) and to is also associated with susceptibility to non-insulin-dependent diabetes mellitus (NIDDM).,similarity:Belongs to the G-protein coupled receptor 1 family.,tissue specificity:Expressed mainly in adipose tissues.,		

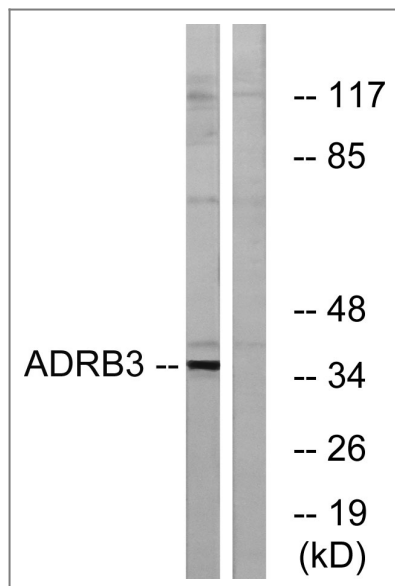
| Validation Data



Immunofluorescence analysis of A549. 1,primary Antibody was diluted at 1:200(4°C overnight). 2, Goat Anti Rabbit IgG (H&L) - Alexa Fluor 488 Secondary antibody was diluted at 1:1000(room temperature, 50min).3, DAPI(blue) 10min.



Western Blot analysis of 22RV1 cells using AR-β3 Polyclonal Antibody diluted at 1:1000



Western blot analysis of lysates from K562 cells, using ADRB3 Antibody. The lane on the right is blocked with the synthesized peptide.

Contact information

Orders: order.cn@immunoway.com
 Support: support.cn@immunoway.com
 Telephone: 400-8787-807(China)
 Website: <http://www.immunoway.com.cn>
 Address: 2200 Ringwood Ave San Jose, CA 95131 USA



Please scan the QR code to access additional product information:
AR-β3 Rabbit pAb

For Research Use Only. Not for Use in Diagnostic Procedures.

[Antibody](#) | [ELISA Kits](#) | [Protein](#) | [Reagents](#)