

ARHGAP23 Rabbit pAb

CatalogNo: YT0319

Key Features

Host Species

- Rabbit

Reactivity

- Human, Mouse

Applications

- IHC, IF, WB, ELISA

MW

- 162kD (Calculated)

Isotype

- IgG

Recommended Dilution Ratios

WB 1:500-2000

IHC 1:100-1:300

ELISA 1:40000

IF 1:50-200

Storage

Storage*

-15°C to -25°C/1 year (Do not lower than -25°C)

Formulation

Liquid in PBS containing 50% glycerol, 0.5% BSA and 0.02% sodium azide.

Basic Information

Clonality

Polyclonal

Immunogen Information

Immunogen

Synthesized peptide derived from ARHGAP23 . at AA range: 470-550

Specificity

ARHGAP23 Polyclonal Antibody detects endogenous levels of ARHGAP23 protein.

Target Information

Gene name ARHGAP23

Protein Name Rho GTPase-activating protein 23

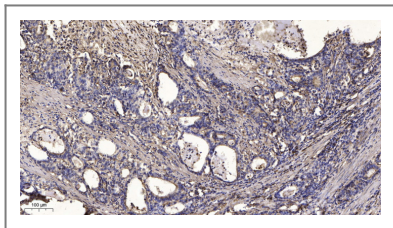
Organism	Gene ID	UniProt ID
Human	57636;	Q9P227;
Mouse		Q69ZH9;

Cellular Localization cytosol,extracellular exosome,

Tissue specificity Expressed in placenta, prostate, hippocampus and brain medulla. Also expressed in brain tumor, salivary gland tumor, head and neck tumor.

Function Function:GTPase activator for the Rho-type GTPases by converting them to an inactive GDP-bound state.,similarity:Contains 1 PDZ (DHR) domain.,similarity:Contains 1 PH domain.,similarity:Contains 1 Rho-GAP domain.,tissue specificity:Expressed in placenta, prostate, hippocampus and brain medulla. Also expressed in brain tumor, salivary gland tumor, head and neck tumor.,

| Validation Data



Immunohistochemical analysis of paraffin-embedded human Gastric adenocarcinoma. 1, Antibody was diluted at 1:200(4° overnight). 2, Tris-EDTA,pH9.0 was used for antigen retrieval. 3,Secondary antibody was diluted at 1:200(room temperature, 45min).

| Contact information

Orders: order.cn@immunoway.com
Support: support.cn@immunoway.com
Telephone: 400-8787-807(China)
Website: <http://www.immunoway.com.cn>
Address: 2200 Ringwood Ave San Jose, CA 95131 USA



Please scan the QR code to access additional product information:
ARHGAP23 Rabbit pAb

For Research Use Only. Not for Use in Diagnostic Procedures.

[Antibody](#) | [ELISA Kits](#) | [Protein](#) | [Reagents](#)