

ARF GAP1 Rabbit pAb

CatalogNo: YT0306

Orthogonal Validated 

Key Features

Host Species

- Rabbit

Reactivity

- Human, Mouse, Rat, Monkey, Bovine

Applications

- WB, IHC, IF, ELISA

MW

- 48kD (Observed)

Isotype

- IgG

Recommended Dilution Ratios

WB 1:500-1:2000**IHC 1:100-1:300****IF 1:200-1:1000****ELISA 1:20000****Not yet tested in other applications.**

Storage

Storage* -15°C to -25°C/1 year (Do not lower than -25°C)**Formulation** Liquid in PBS containing 50% glycerol, 0.5% BSA and 0.02% sodium azide.

Basic Information

Clonality Polyclonal

Immunogen Information

Immunogen The antiserum was produced against synthesized peptide derived from human ARFGAP1. AA range: 171-220**Specificity** ARF GAP1 Polyclonal Antibody detects endogenous levels of ARF GAP1 protein.

Target Information

Gene name ARFGAP1

Protein Name ADP-ribosylation factor GTPase-activating protein 1

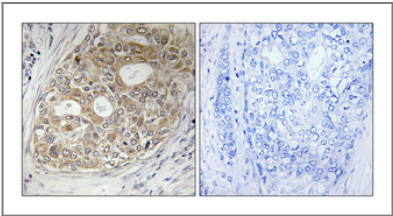
Organism	Gene ID	UniProt ID
Human	55738 ;	Q8N6T3 ;
Mouse	228998 ;	Q9EPJ9 ;
Rat	246310 ;	Q62848 ;

Cellular Localization Cytoplasm . Golgi apparatus . Associates with the Golgi complex. .

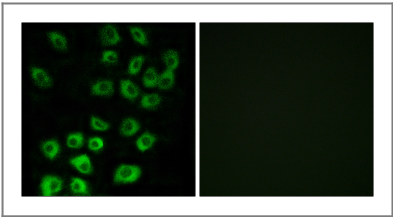
Tissue specificity Brain,Epithelium,Fetal brain,Testis,

Function Domain:The region downstream of Arf-GAP domain is essential to GAP activity in vivo. This region may be required for its targeting to Golgi membranes.,Function:GTPase-activating protein (GAP) for the ADP ribosylation factor 1 (ARF1). Involved in membrane trafficking and /or vesicle transport. Promotes hydrolysis of the ARF1-bound GTP and thus, is required for the dissociation of coat proteins from Golgi-derived membranes and vesicles, a prerequisite for vesicle's fusion with target compartment. Probably regulates ARF1-mediated transport via its interaction with the KDELR proteins and RNP24. Overexpression induces the redistribution of the entire Golgi complex to the endoplasmic reticulum, as when ARF1 is deactivated. Its activity is stimulated by phosphoinosides and inhibited by phosphatidylcholine.,sequence Caution:Intron retention.,similarity:Contains 1 Arf-GAP domain.,subcellular location:Associates with the Golgi complex.,subunit:Interacts with ARF1. Interacts with the COPI coat proteins, KDELR1 and RNP24. The interaction with RNP24 inhibits the GAP activity.,

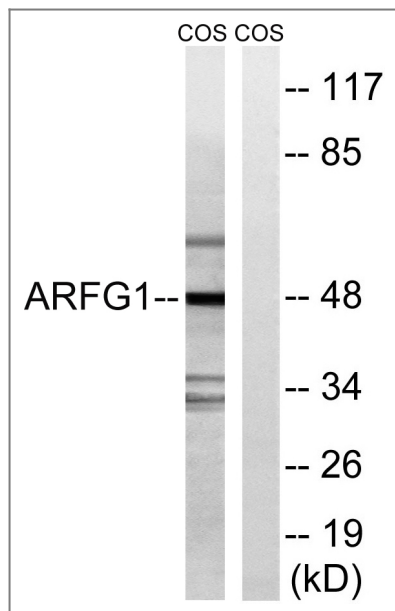
Validation Data



Immunohistochemical analysis of paraffin-embedded Human breast cancer. Antibody was diluted at 1:100(4° overnight). High-pressure and temperature Tris-EDTA,pH8.0 was used for antigen retrieval. Negative contrl (right) obtained from antibody was pre-absorbed by immunogen peptide.



Immunofluorescence analysis of MCF7 cells, using ARFGAP1 Antibody. The picture on the right is blocked with the synthesized peptide.



Western blot analysis of lysates from COS7 cells, using ARFGAP1 Antibody. The lane on the right is blocked with the synthesized peptide.

Contact information

Orders: order.cn@immunoway.com
 Support: support.cn@immunoway.com
 Telephone: 400-8787-807(China)
 Website: <http://www.immunoway.com.cn>
 Address: 2200 Ringwood Ave San Jose, CA 95131 USA



Please scan the QR code to access additional product information:
ARF GAP1 Rabbit pAb

For Research Use Only. Not for Use in Diagnostic Procedures.

[Antibody](#) | [ELISA Kits](#) | [Protein](#) | [Reagents](#)