

AQP3 Rabbit pAb

CatalogNo: YT0291

Key Features

Host Species

- Rabbit

Reactivity

- Human, Mouse, Rat

Applications

- IHC, IF, ELISA

MW

- 32kD (Calculated)

Isotype

- IgG

Recommended Dilution Ratios

IHC 1:100-1:300

ELISA 1:40000

IF 1:50-200

Storage

Storage*

-15°C to -25°C/1 year (Do not lower than -25°C)

Formulation

Liquid in PBS containing 50% glycerol, 0.5% BSA and 0.02% sodium azide.

Basic Information

Clonality

Polyclonal

Immunogen Information

Immunogen

The antiserum was produced against synthesized peptide derived from human AQP3. AA range: 165-214

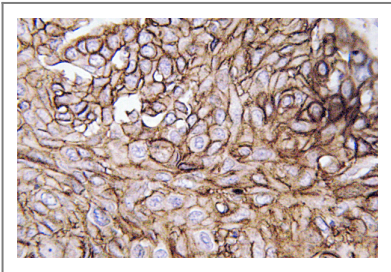
Specificity

AQP3 Polyclonal Antibody detects endogenous levels of AQP3 protein.

Target Information

Gene name	AQP3		
Protein Name	Aquaporin-3		
	Organism	Gene ID	UniProt ID
	Human	360;	Q92482;
	Mouse	11828;	Q8R2N1;
	Rat	65133;	P47862;
Cellular Localization	Cell membrane ; Multi-pass membrane protein . Basolateral cell membrane ; Multi-pass membrane protein .		
Tissue specificity	Widely expressed in epithelial cells of kidney (collecting ducts) and airways, in keratinocytes, immature dendritic cells and erythrocytes. Isoform 2 is not detectable in erythrocytes at the protein level.		
Function	<p>Domain:Aquaporins contain two tandem repeats each containing three membrane-spanning domains and a pore-forming loop with the signature motif Asn-Pro-Ala (NPA).,Function:Forms a water-specific channel that provide kidney medullary collecting duct with high permeability to water, thereby permitting water to move in the direction of an osmotic gradient. May function as a water and urea exit mechanism in antidiuresis in collecting duct cells. Also slightly permeable to urea and glycerol. May play an important role in gastrointestinal tract water transport and in glycerol metabolism.,online information:Blood group antigen gene mutation database,polymorphism:AQP3 is responsible for the GIL blood group system. Isoform 2 is detected in GIL-negative individuals that lack functional AQP3.,similarity:Belongs to the MIP/aquaporin (TC 1.A.8) family.,subcellular location:In collecting ducts of kidney.,tissue specificity:Widely expressed in epithelial cells of kidney (collecting ducts) and airways, in keratinocytes, immature dendritic cells and erythrocytes. Isoform 2 is not detectable in erythrocytes at the protein level.,</p>		

| Validation Data



Immunohistochemistry analysis of AQP3 antibody in paraffin-embedded human lung carcinoma tissue.

| Contact information

Orders: order.cn@immunoway.com
Support: support.cn@immunoway.com
Telephone: 400-8787-807(China)
Website: <http://www.immunoway.com.cn>
Address: 2200 Ringwood Ave San Jose, CA 95131 USA



Please scan the QR code
to access additional
product information:
AQP3 Rabbit pAb

For Research Use Only. Not for Use in Diagnostic Procedures.

[Antibody](#) | [ELISA Kits](#) | [Protein](#) | [Reagents](#)