

## ApoL3 Rabbit pAb

CatalogNo: YT0279

### Key Features

#### Host Species

- Rabbit

#### Reactivity

- Human

#### Applications

- IHC,IF,ELISA

#### MW

- 44kD (Calculated)

#### Isotype

- IgG

### Recommended Dilution Ratios

IHC 1:100-1:300

ELISA 1:40000

IF 1:50-200

### Storage

#### Storage\*

-15°C to -25°C/1 year(Do not lower than -25°C)

#### Formulation

Liquid in PBS containing 50% glycerol, 0.5% BSA and 0.02% sodium azide.

### Basic Information

#### Clonality

Polyclonal

### Immunogen Information

#### Immunogen

Synthesized peptide derived from ApoL3 . at AA range: 100-180

#### Specificity

ApoL3 Polyclonal Antibody detects endogenous levels of ApoL3 protein.

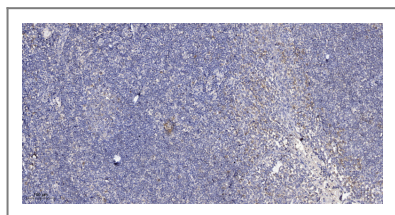
### Target Information

#### Gene name

APOL3

<b>Protein Name</b>	Apolipoprotein L3		
	<b>Organism</b>	<b>Gene ID</b>	<b>UniProt ID</b>
	Human	<a href="#">80833</a> ;	<a href="#">O95236</a> ;
<b>Cellular Localization</b>	Cytoplasm .		
<b>Tissue specificity</b>	Widely expressed; the highest levels are in prostate, lung and placenta; also detected in kidney, bone marrow, spleen, thymus, spinal cord, adrenal gland, salivary gland, trachea and mammary gland; levels are low in brain, heart, fetal liver, pancreas and testis.		
<b>Function</b>	Function:May affect the movement of lipids in the cytoplasm or allow the binding of lipids to organelles.,induction:In vitro, is responsive to tumor necrosis factor.,similarity:Belongs to the apolipoprotein L family.,tissue specificity:Widely expressed; the highest levels are in prostate, lung and placenta; also detected in kidney, bone marrow, spleen, thymus, spinal cord, adrenal gland, salivary gland, trachea and mammary gland; levels are low in brain, heart, fetal liver, pancreas and testis.,		

## Validation Data



Immunohistochemical analysis of paraffin-embedded human tonsil. 1, Antibody was diluted at 1:200(4° overnight). 2, Tris-EDTA,pH9.0 was used for antigen retrieval. 3,Secondary antibody was diluted at 1:200(room temperature, 30min).

## Contact information

Orders: [order.cn@immunoway.com](mailto:order.cn@immunoway.com)  
 Support: [support.cn@immunoway.com](mailto:support.cn@immunoway.com)  
 Telephone: 400-8787-807(China)  
 Website: <http://www.immunoway.com.cn>  
 Address: 2200 Ringwood Ave San Jose, CA 95131 USA



Please scan the QR code to access additional product information:  
**ApoL3 Rabbit pAb**

For Research Use Only. Not for Use in Diagnostic Procedures.

[Antibody](#) | [ELISA Kits](#) | [Protein](#) | [Reagents](#)