

## APC1 Rabbit pAb

CatalogNo: YT0261 **Orthogonal Validated** 

### Key Features

#### Host Species

- Rabbit

#### Reactivity

- Human, Mouse

#### Applications

- IHC, IF, ELISA

#### MW

- 217kD (Calculated)

#### Isotype

- IgG

### Storage

**Storage\*** -15°C to -25°C/1 year (Do not lower than -25°C)

**Formulation** Liquid in PBS containing 50% glycerol, 0.5% BSA and 0.02% sodium azide.

### Recommended Dilution Ratios

IHC 1:100-1:300

ELISA 1:40000

IF 1:50-200

### Basic Information

**Clonality** Polyclonal

### Immunogen Information

**Immunogen** The antiserum was produced against synthesized peptide derived from human APC1. AA range:321-370

**Specificity** APC1 Polyclonal Antibody detects endogenous levels of APC1 protein.

### Target Information

**Gene name** ANAPC1

**Protein Name** Anaphase-promoting complex subunit 1

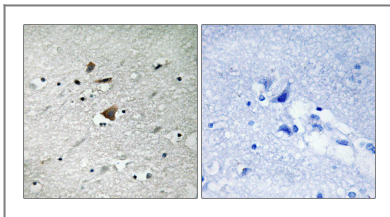
Organism	Gene ID	UniProt ID
Human	<a href="#">64682</a> ;	<a href="#">Q9H1A4</a> ;
Mouse	<a href="#">17222</a> ;	<a href="#">P53995</a> ;

**Cellular Localization** nucleoplasm ,anaphase-promoting complex ,cytosol ,

**Tissue specificity** Colon ,Epithelium ,Ovary ,Placenta ,

**Function** Function:Component of the anaphase promoting complex/cyclosome (APC/C) , a cell cycle-regulated E3 ubiquitin ligase that controls progression through mitosis and the G1 phase of the cell cycle. ,pathway:Protein modification; protein ubiquitination. ,PTM:Phosphorylated. Phosphorylation on Ser-355 occurs specifically during mitosis. ,similarity:Belongs to the APC1 family. ,similarity:Contains 4 PC repeats. ,subunit:The APC/C is composed of at least 11 subunits. ,

## Validation Data



Immunohistochemistry analysis of paraffin-embedded human brain tissue, using APC1 Antibody. The picture on the right is blocked with the synthesized peptide.

## Contact information

Orders: [order.cn@immunoway.com](mailto:order.cn@immunoway.com)  
Support: [support.cn@immunoway.com](mailto:support.cn@immunoway.com)  
Telephone: 400-8787-807(China)  
Website: <http://www.immunoway.com.cn>  
Address: 2200 Ringwood Ave San Jose, CA 95131 USA



Please scan the QR code to access additional product information:  
**APC1 Rabbit pAb**

For Research Use Only. Not for Use in Diagnostic Procedures.

[Antibody](#) | [ELISA Kits](#) | [Protein](#) | [Reagents](#)