

## AP-1/JunD Rabbit pAb

CatalogNo: YT0246

### Key Features

#### Host Species

- Rabbit

#### Reactivity

- Human, Mouse, Rat

#### Applications

- WB, IHC, IF, ELISA

#### MW

- 39-42kD (Observed)

#### Isotype

- IgG

### Storage

**Storage\*** -15°C to -25°C/1 year (Do not lower than -25°C)

**Formulation** Liquid in PBS containing 50% glycerol, 0.5% BSA and 0.02% sodium azide.

### Recommended Dilution Ratios

**WB 1:500-1:2000**

**IHC 1:100-1:300**

**ELISA 1:10000**

**IF 1:50-200**

### Basic Information

**Clonality** Polyclonal

### Immunogen Information

**Immunogen** The antiserum was produced against synthesized peptide derived from human c-Jun. AA range:40-89

**Specificity** AP-1 Polyclonal Antibody detects endogenous levels of AP-1 protein.

### Target Information

**Gene name** JUN/JUND

**Protein Name** Transcription factor AP-1;jun;c-jun; AP-1; Transcription factor jun-D

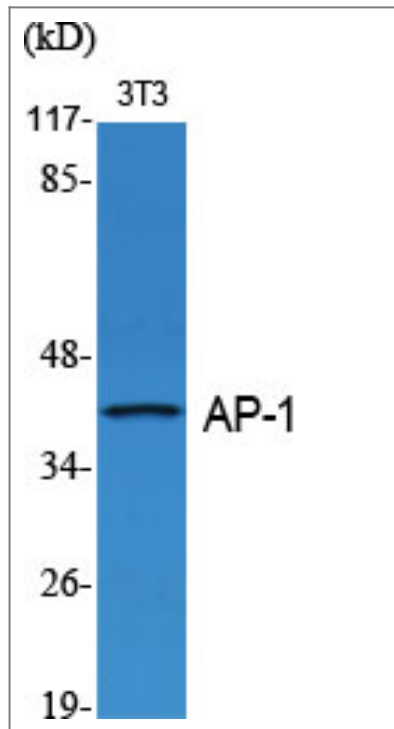
Organism	Gene ID	UniProt ID
Human	<a href="#">3725</a> ; <a href="#">3727</a> ;	<a href="#">P05412</a> ; <a href="#">P17535</a> ;
Mouse	<a href="#">16476</a> ; <a href="#">16478</a> ;	
Rat	<a href="#">24516</a> ; <a href="#">24518</a> ;	<a href="#">P17325</a> ; <a href="#">P52909</a> ;

**Cellular Localization** Nucleus.

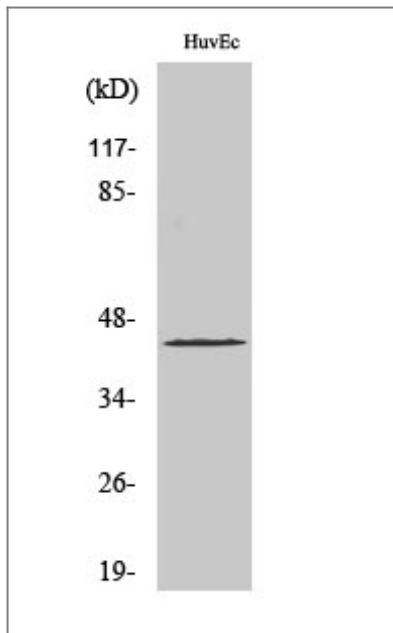
**Tissue specificity** Expressed in the developing and adult prostate and prostate cancer cells.

**Function** Function:Transcription factor that recognizes and binds to the enhancer heptamer motif 5'-TGA[CG]TCA-3'.,PTM:Phosphorylation enhances the transcriptional activity. Phosphorylated by PRKDC.,similarity:Belongs to the bZIP family.,similarity:Belongs to the bZIP family. Jun subfamily.,similarity:Contains 1 bZIP domain.,subunit:Heterodimer with either FOS or BATF3. Interacts with HIVEP3 (By similarity). Interacts with SMAD3/SMAD4 heterodimers. Interacts with MYBBP1A, SPIB and TCF20. Interacts with COPS5; indirectly leading to its phosphorylation. Interacts with DSIPI; this interaction inhibits the binding of active AP1 to its target DNA.,

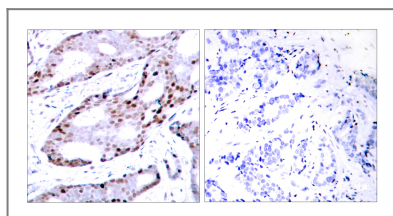
## Validation Data



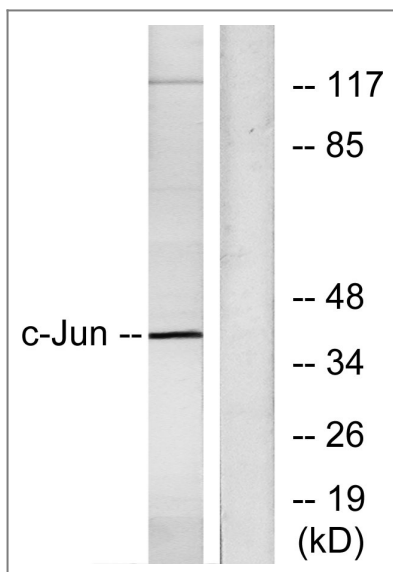
Western Blot analysis of various cells using AP-1/Jun D Polyclonal Antibody



Western Blot analysis of HuvEc cells using AP-1/Jun D Polyclonal Antibody



Immunohistochemistry analysis of paraffin-embedded human breast carcinoma tissue, using c-Jun Antibody. The picture on the right is blocked with the synthesized peptide.



Western blot analysis of lysates from HeLa cells, using c-Jun Antibody. The lane on the right is blocked with the synthesized peptide.

## Contact information

Orders: order.cn@immunoway.com  
 Support: support.cn@immunoway.com  
 Telephone: 400-8787-807(China)  
 Website: <http://www.immunoway.com.cn>  
 Address: 2200 Ringwood Ave San Jose, CA 95131 USA



Please scan the QR code to access additional product information:  
**AP-1/JunD Rabbit pAb**

