

Annexin X Rabbit pAb

CatalogNo: YT0239

Key Features

Host Species

- Rabbit

Reactivity

- Human, Mouse

Applications

- WB, ELISA

MW

- 38kD (Observed)

Isotype

- IgG

Storage

Storage* -15°C to -25°C/1 year (Do not lower than -25°C)

Formulation Liquid in PBS containing 50% glycerol, 0.5% BSA and 0.02% sodium azide.

Recommended Dilution Ratios

WB 1:500-1:2000

ELISA 1:20000

Not yet tested in other applications.

Basic Information

Clonality Polyclonal

Immunogen Information

Immunogen The antiserum was produced against synthesized peptide derived from human ANXA10. AA range:261-310

Specificity Annexin X Polyclonal Antibody detects endogenous levels of Annexin X protein.

Target Information

Gene name ANXA10

Protein Name Annexin A10

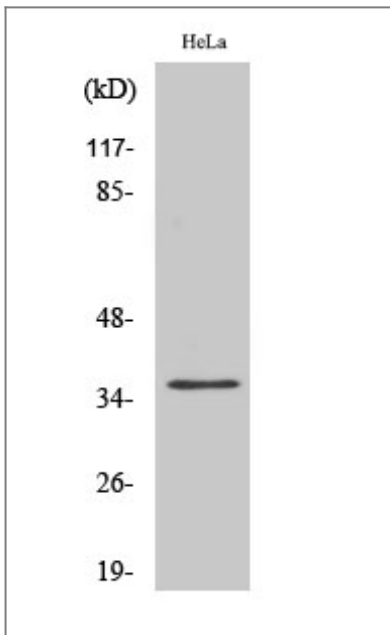
Organism	Gene ID	UniProt ID
Human	11199;	Q9UJ72;
Mouse	26359;	Q9QZ10;

Cellular Localization mitochondrion ,

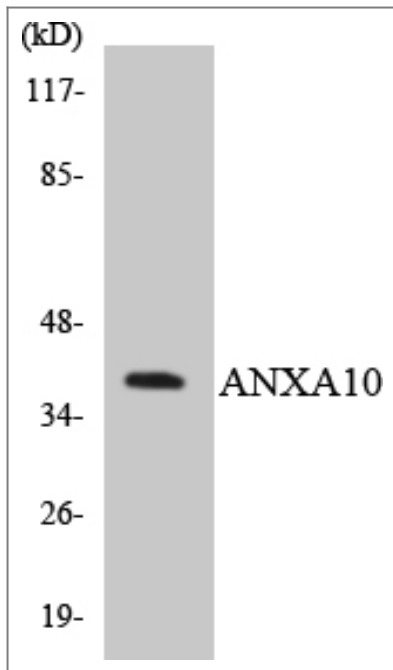
Tissue specificity Colon ,Lung ,

Function similarity:Belongs to the annexin family. ,similarity:Contains 4 annexin repeats. ,

Validation Data



Western Blot analysis of various cells using Annexin X Polyclonal Antibody



Western blot analysis of the lysates from Jurkat cells using ANXA10 antibody.

Contact information

Orders: order.cn@immunoway.com
Support: support.cn@immunoway.com
Telephone: 400-8787-807(China)
Website: <http://www.immunoway.com.cn>
Address: 2200 Ringwood Ave San Jose, CA 95131 USA



Please scan the QR code to access additional product information:
Annexin X Rabbit pAb

For Research Use Only. Not for Use in Diagnostic Procedures.

[Antibody](#) | [ELISA Kits](#) | [Protein](#) | [Reagents](#)