

ANKRD20 Rabbit pAb

CatalogNo: YT0230

Key Features

Host Species

- Rabbit

Reactivity

- Human

Applications

- IHC,IF,ELISA

MW

- 95kD (Observed)

Isotype

- IgG

Recommended Dilution Ratios

IHC 1:100-1:300

ELISA 1:10000

IF 1:50-200

Storage

Storage* -15°C to -25°C/1 year(Do not lower than -25°C)

Formulation Liquid in PBS containing 50% glycerol, 0.5% BSA and 0.02% sodium azide.

Basic Information

Clonality Polyclonal

Immunogen Information

Immunogen The antiserum was produced against synthesized peptide derived from human ANKRD20A3. AA range:551-600

Specificity ANKRD20 Polyclonal Antibody detects endogenous levels of ANKRD20 protein.

Target Information

Gene name ANKRD20A3

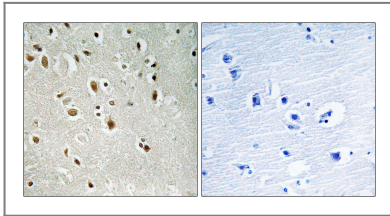
Protein Name Ankyrin repeat domain-containing protein 20A3

Organism	Gene ID	UniProt ID
Human	441425 ;	Q5VUR7 ;

Tissue specificity Testis,

Function similarity:Contains 5 ANK repeats.,tissue specificity:Widely expressed; not found in kidney, nor in liver.,

Validation Data



Immunohistochemistry analysis of paraffin-embedded human brain, using ANKRD20A3 Antibody. The picture on the right is blocked with the synthesized peptide.

Contact information

Orders: order.cn@immunoway.com
Support: support.cn@immunoway.com
Telephone: 400-8787-807(China)
Website: <http://www.immunoway.com.cn>
Address: 2200 Ringwood Ave San Jose, CA 95131 USA



Please scan the QR code to access additional product information:
ANKRD20 Rabbit pAb

For Research Use Only. Not for Use in Diagnostic Procedures.

[Antibody](#) | [ELISA Kits](#) | [Protein](#) | [Reagents](#)