

## A-Myb Rabbit pAb

CatalogNo: YT0224

### Key Features

#### Host Species

- Rabbit

#### Reactivity

- Human, Mouse

#### Applications

- WB, ELISA

#### MW

- 85kD (Observed)

#### Isotype

- IgG

### Storage

**Storage\*** -15°C to -25°C/1 year (Do not lower than -25°C)

**Formulation** Liquid in PBS containing 50% glycerol, 0.5% BSA and 0.02% sodium azide.

### Recommended Dilution Ratios

**WB 1:500-1:2000**

**ELISA 1:10000**

**Not yet tested in other applications.**

### Basic Information

**Clonality** Polyclonal

### Immunogen Information

**Immunogen** The antiserum was produced against synthesized peptide derived from human MYB-A. AA range: 231-280

**Specificity** A-Myb Polyclonal Antibody detects endogenous levels of A-Myb protein.

### Target Information

**Gene name** MYBL1

**Protein Name** Myb-related protein A

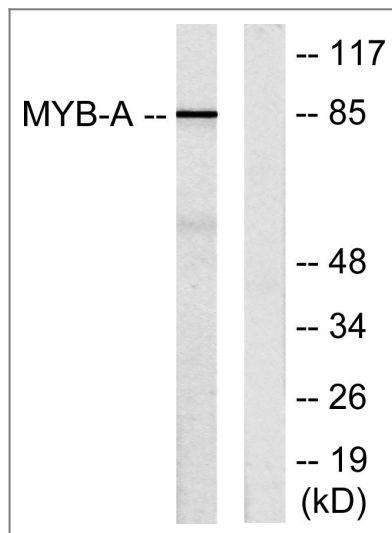
Organism	Gene ID	UniProt ID
Human	<a href="#">4603;</a>	<a href="#">P10243;</a>
Mouse	<a href="#">17864;</a>	<a href="#">P51960;</a>

**Cellular Localization** Nucleus .

**Tissue specificity** Expressed in a variety of lymphoid and solid tumor lines cultured in vitro.

**Function** Function:Strong transcriptional activator; DNA-binding protein that specifically recognize the sequence 5'-YAAC[GT]G-3'. Could have a role in the proliferation and/or differentiation of neurogenic, spermatogenic and B-lymphoid cells.,similarity:Contains 3 HTH myb-type DNA-binding domains.,subunit:Component of the DREAM complex (also named LINC complex) at least composed of E2F4, E2F5, LIN9, LIN37, LIN52, LIN54, MYBL1, MYBL2, RBL1, RBL2, RBBP4, TFDP1 and TFDP2. The complex exists in quiescent cells where it represses cell cycle-dependent genes. It dissociates in S phase when LIN9, LIN37, LIN52 and LIN54 form a subcomplex that binds to MYBL2.,tissue specificity:Expressed in a variety of lymphoid and solid tumor lines cultured in vitro.,

## Validation Data



Western blot analysis of lysates from LOVO cells, using MYB-A Antibody. The lane on the right is blocked with the synthesized peptide.

## Contact information

Orders: order.cn@immunoway.com  
Support: support.cn@immunoway.com  
Telephone: 400-8787-807(China)  
Website: <http://www.immunoway.com.cn>  
Address: 2200 Ringwood Ave San Jose, CA 95131 USA



Please scan the QR code  
to access additional  
product information:  
**A-Myb Rabbit pAb**

---

For Research Use Only. Not for Use in Diagnostic Procedures.

[Antibody](#) | [ELISA Kits](#) | [Protein](#) | [Reagents](#)