

AMPK α 1/2 Rabbit pAb

CatalogNo: YT0216

Orthogonal Validated 

Key Features

Host Species

- Rabbit

Reactivity

- Human, Mouse, Rat, Monkey, Bovine, Fish

Applications

- WB, IHC, IF, ELISA

MW

- 63kD (Observed)

Isotype

- IgG

Recommended Dilution Ratios

WB 1:500-2000

IHC 1:100-500

IF/ICC 1:100-500

ELISA 1:5000-20000

Storage

Storage*

-15°C to -25°C/1 year (Do not lower than -25°C)

Formulation

Liquid in PBS containing 50% glycerol, 0.5% BSA and 0.02% sodium azide.

Basic Information

Clonality

Polyclonal

Immunogen Information

Immunogen

The antiserum was produced against synthesized peptide derived from human AMPK alpha. AA range: 140-189

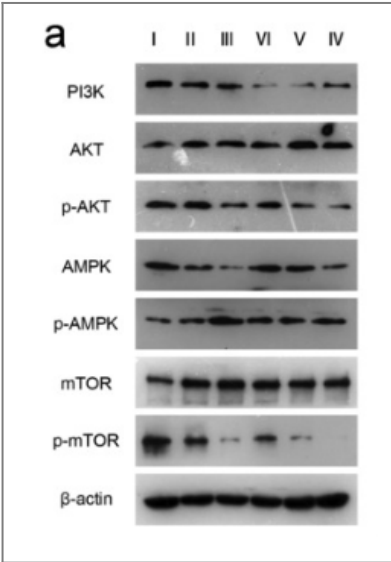
Specificity

AMPK α 1/2 Polyclonal Antibody detects endogenous levels of AMPK α 1/2 protein.

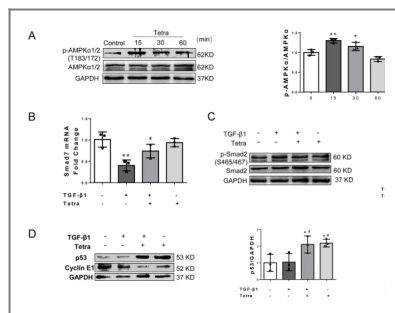
Target Information

| | | | |
|-----------------------|---|---|---|
| Gene name | AAPK1/AAPK2 | | |
| Protein Name | 5'-AMP-activated protein kinase catalytic subunit alpha-1/2 | | |
| | Organism | Gene ID | UniProt ID |
| | Human | 5562 ; 5563 ; | Q13131 ; P54646 ; |
| | Mouse | 105787 ; 108079 ; | |
| | Rat | 65248 ; 78975 ; | P54645 ; Q09137 ; |
| Cellular Localization | Cytoplasm . Nucleus . In response to stress, recruited by p53/TP53 to specific promoters. . | | |
| Tissue specificity | Brain,Intestine,Liver,Mammary gland,Platelet,Testis | | |
| Function | Catalytic activity:ATP + a protein = ADP + a phosphoprotein.,cofactor:Magnesium.,enzyme regulation:Binding of AMP results in allosteric activation, inducing phosphorylation on Thr-174 by STK11 in complex with STE20-related adapter-alpha (STRAD alpha) pseudo kinase and CAB39. Also activated by phosphorylation by CAMKK2 triggered by a rise in intracellular calcium ions, without detectable changes in the AMP/ATP ratio.,Function:Responsible for the regulation of fatty acid synthesis by phosphorylation of acetyl-CoA carboxylase. It also regulates cholesterol synthesis via phosphorylation and inactivation of hormone-sensitive lipase and hydroxymethylglutaryl-CoA reductase. Appears to act as a metabolic stress-sensing protein kinase switching off biosynthetic pathways when cellular ATP levels are depleted and when 5'-AMP rises in response to fuel limitation and/or hypoxia. This is a catalytic subunit.,sequence Caution:Translation N-terminally shortened.,similarity:Belongs to the protein kinase superfamily.,similarity:Belongs to the protein kinase superfamily. CAMK Ser/Thr protein kinase family. SNF1 subfamily.,similarity:Contains 1 protein kinase domain.,subunit:Heterotrimer of an alpha catalytic subunit, a beta and a gamma non-catalytic subunits. Interacts with FNIP1 and FNIP2., | | |

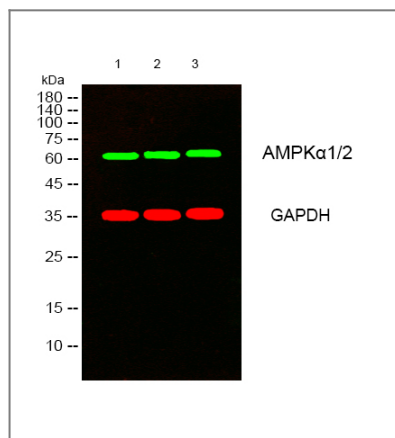
| Validation Data



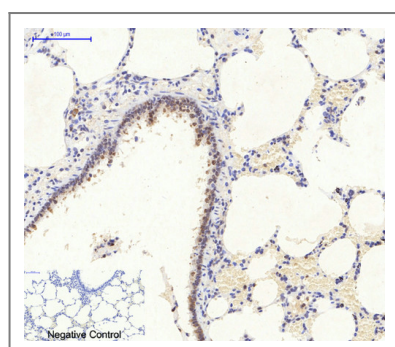
Kang, Min, et al. "Autophagy was activated against the damages of placentas caused by nano-copper oral exposure." Ecotoxicology and Environmental Safety 220 (2021): 112364.



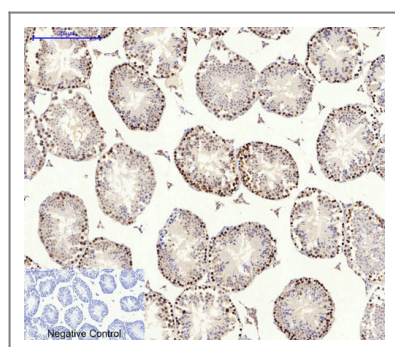
Gao, L., Wang, Ly., Liu, Zq. et al. TNAP inhibition attenuates cardiac fibrosis induced by myocardial infarction through deactivating TGF- β 1/Smads and activating P53 signaling pathways. Cell Death Dis 11, 44 (2020)



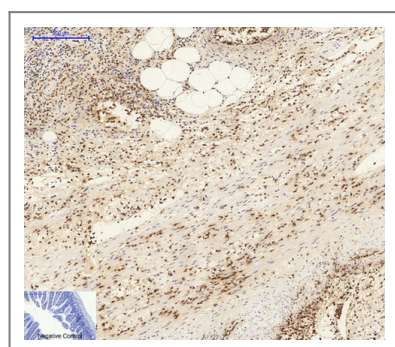
Western blot analysis of lysates from 1) K562 , 2) COS7 , 3) KB cells, (Green) primary antibody was diluted at 1:1000, 4° over night, secondary antibody(cat:RS23920)was diluted at 1:10000, 37° 1hour. (Red) GAPDH Monoclonal Antibody(2B8) (cat:YM3029) antibody was diluted at 1:5000 as loading control, 4° over night,secondary antibody(cat:RS23710)was diluted at 1:10000, 37° 1hour.



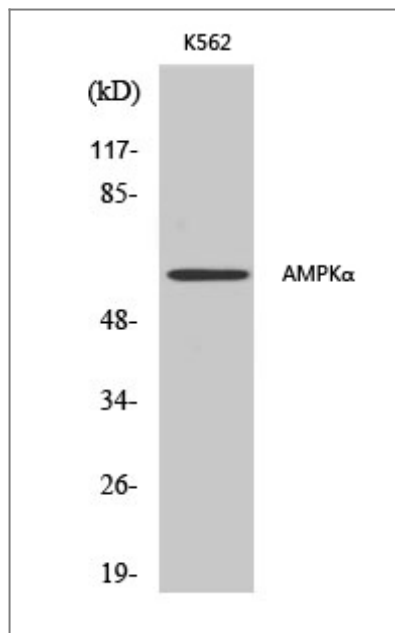
Immunohistochemical analysis of paraffin-embedded Rat-lung tissue. 1,AMPK α 1/2 Polyclonal Antibody was diluted at 1:200(4°C,overnight). 2, Sodium citrate pH 6.0 was used for antibody retrieval(>98°C,20min). 3,Secondary antibody was diluted at 1:200(room tempeRature, 30min). Negative control was used by secondary antibody only.



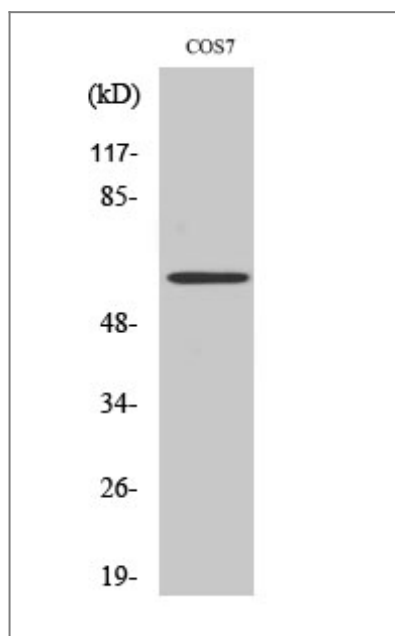
Immunohistochemical analysis of paraffin-embedded Mouse-testis tissue. 1,AMPK α 1/2 Polyclonal Antibody was diluted at 1:200(4°C,overnight). 2, Sodium citrate pH 6.0 was used for antibody retrieval(>98°C,20min). 3,Secondary antibody was diluted at 1:200(room tempeRature, 30min). Negative control was used by secondary antibody only.



Immunohistochemical analysis of paraffin-embedded Mouse-colon tissue. 1,AMPK α 1/2 Polyclonal Antibody was diluted at 1:200(4°C,overnight). 2, Sodium citrate pH 6.0 was used for antibody retrieval(>98°C,20min). 3,Secondary antibody was diluted at 1:200(room tempeRature, 30min). Negative control was used by secondary antibody only.



Western Blot analysis of various cells using AMPK α 1/2 Polyclonal Antibody diluted at 1:500



Western Blot analysis of COS7 cells using AMPK α 1/2 Polyclonal Antibody diluted at 1:500

Contact information

Orders: order.cn@immunoway.com
 Support: support.cn@immunoway.com
 Telephone: 400-8787-807(China)
 Website: <http://www.immunoway.com.cn>
 Address: 2200 Ringwood Ave San Jose, CA 95131 USA



Please scan the QR code to access additional product information:
AMPK α 1/2 Rabbit pAb