

AMPD1 Rabbit pAb

CatalogNo: YT0211

Key Features

Host Species

- Rabbit

Reactivity

- Human, Mouse, Rat

Applications

- IHC, IF, ELISA

MW

- 86kD (Calculated)

Isotype

- IgG

Recommended Dilution Ratios

IHC 1:100-1:300

ELISA 1:40000

IF 1:50-200

Storage

Storage*

-15°C to -25°C/1 year (Do not lower than -25°C)

Formulation

Liquid in PBS containing 50% glycerol, 0.5% BSA and 0.02% sodium azide.

Basic Information

Clonality

Polyclonal

Immunogen Information

Immunogen

The antiserum was produced against synthesized peptide derived from human AMPD1. AA range: 261-310

Specificity

AMPD1 Polyclonal Antibody detects endogenous levels of AMPD1 protein.

Target Information

Gene name AMPD1

Protein Name AMP deaminase 1

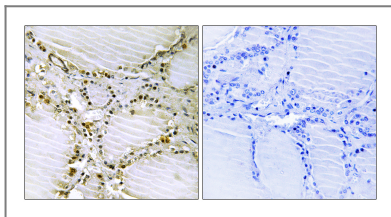
Organism	Gene ID	UniProt ID
Human	270;	P23109;
Mouse		Q3V1D3;
Rat	25028;	P10759;

Cellular Localization cytosol,

Tissue specificity Skeletal muscle,

Function Catalytic activity:AMP + H(2)O = IMP + NH(3).,Disease:Defects in AMPD1 are the cause of adenosine monophosphate deaminase deficiency muscle type (AMPDDM) [MIM:102770]. AMPDDM is a metabolic disorder resulting in exercise-related myopathy. It is characterized by exercise-induced muscle aches, cramps, and early fatigue.,Function:AMP deaminase plays a critical role in energy metabolism.,pathway:Purine metabolism; IMP biosynthesis via salvage pathway; IMP from AMP: step 1/1.,similarity:Belongs to the adenosine and AMP deaminases family.,subunit:Homotetramer.,tissue specificity:Three isoforms are present in mammals: AMP deaminase 1 is the predominant form in skeletal muscle; AMP deaminase 2 predominates in smooth muscle, non-muscle tissue, embryonic muscle and undifferentiated myoblasts; AMP deaminase 3 is found in erythrocytes.,

Validation Data



Immunohistochemistry analysis of paraffin-embedded human thyroid gland tissue, using AMPD1 Antibody. The picture on the right is blocked with the synthesized peptide.

Contact information

Orders: order.cn@immunoway.com
Support: support.cn@immunoway.com
Telephone: 400-8787-807(China)
Website: <http://www.immunoway.com.cn>
Address: 2200 Ringwood Ave San Jose, CA 95131 USA



Please scan the QR code to access additional product information:
AMPD1 Rabbit pAb

