

AKAP 250 Rabbit pAb

CatalogNo: YT0166

Key Features

Host Species

- Rabbit

Reactivity

- Human, Mouse, Rat

Applications

- IHC, IF, ELISA

MW

- 191kD (Calculated)

Isotype

- IgG

Recommended Dilution Ratios

IHC 1:100-1:300

IF 1:200-1:1000

ELISA 1:20000

Not yet tested in other applications.

Storage

Storage*

-15°C to -25°C/1 year (Do not lower than -25°C)

Formulation

Liquid in PBS containing 50% glycerol, 0.5% BSA and 0.02% sodium azide.

Basic Information

Clonality

Polyclonal

Immunogen Information

Immunogen

The antiserum was produced against synthesized peptide derived from human AKAP12. AA range: 301-350

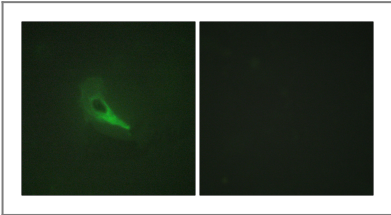
Specificity

AKAP 250 Polyclonal Antibody detects endogenous levels of AKAP 250 protein.

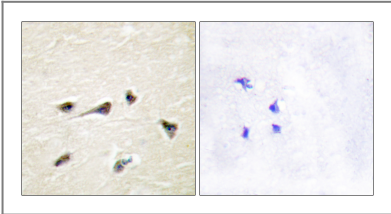
Target Information

Gene name	AKAP12		
Protein Name	A-kinase anchor protein 12		
	Organism	Gene ID	UniProt ID
	Human	9590 ;	Q02952 ;
	Mouse		Q9WTQ5 ;
Cellular Localization	Cytoplasm, cell cortex . Cytoplasm, cytoskeleton . Membrane ; Lipid-anchor . May be part of the cortical cytoskeleton.		
Tissue specificity	Expressed in endothelial cells, cultured fibroblasts and osteosarcoma, but not in platelets, leukocytes, monocytic cell lines or peripheral blood cells.		
Function	Caution:The sequence shown here is derived from an Ensembl automatic analysis pipeline and should be considered as preliminary data.,Disease:Antibodies to the C-terminal of gravin can be produced by patients with myasthenia gravis (MG).,Domain:Polybasic regions located between residues 266 and 557 are involved in binding PKC.,Function:Anchoring protein that mediates the subcellular compartmentation of protein kinase A (PKA) and protein kinase C (PKC).,induction:Activated by lysophosphatidylcholine (lysoPC).,PTM:Phosphorylated upon DNA damage, probably by ATM or ATR.,similarity:Contains 3 AKAP domains.,subcellular location:May be part of the cortical cytoskeleton.,subunit:Binds to dimeric RII-alpha regulatory subunit of PKC.,tissue specificity:Expressed in endothelial cells, cultured fibroblasts and osteosarcoma, but not in platelets, leukocytes, monocytic cell lines or peripheral blood cells.,		

| Validation Data



Immunofluorescence analysis of HeLa cells, using AKAP12 Antibody. The picture on the right is blocked with the synthesized peptide.



Immunohistochemistry analysis of paraffin-embedded human brain tissue, using AKAP12 Antibody. The picture on the right is blocked with the synthesized peptide.

| Contact information

Orders: order.cn@immunoway.com
Support: support.cn@immunoway.com
Telephone: 400-8787-807(China)
Website: <http://www.immunoway.com.cn>
Address: 2200 Ringwood Ave San Jose, CA 95131 USA



Please scan the QR code
to access additional
product information:
**AKAP 250 Rabbit
pAb**

For Research Use Only. Not for Use in Diagnostic Procedures.

[Antibody](#) | [ELISA Kits](#) | [Protein](#) | [Reagents](#)