

## AKAP 220 Rabbit pAb

CatalogNo: YT0165

### Key Features

#### Host Species

- Rabbit

#### Reactivity

- Human,Rat

#### Applications

- IHC,IF,ELISA

#### MW

- 211kD (Calculated)

#### Isotype

- IgG

### Recommended Dilution Ratios

IHC 1:100-1:300

IF 1:200-1:1000

ELISA 1:10000

Not yet tested in other applications.

### Storage

#### Storage\*

-15°C to -25°C/1 year(Do not lower than -25°C)

#### Formulation

Liquid in PBS containing 50% glycerol, 0.5% BSA and 0.02% sodium azide.

### Basic Information

#### Clonality

Polyclonal

### Immunogen Information

#### Immunogen

The antiserum was produced against synthesized peptide derived from human AKAP11. AA range:1761-1810

#### Specificity

AKAP 220 Polyclonal Antibody detects endogenous levels of AKAP 220 protein.

### Target Information

**Gene name** AKAP11

**Protein Name** A-kinase anchor protein 11

**Organism**

Human

**Gene ID**

[11215;](#)

**UniProt ID**

[Q9UKA4;](#)

**Cellular  
Localization**

Cytoplasm. Cytoplasm, cytoskeleton, microtubule organizing center, centrosome. Cytoplasmic in premeiotic pachytene spermatocytes and in the centrosome of developing postmeiotic germ cells, while a midpiece/centrosome localization was found in elongating spermatocytes and mature sperm.

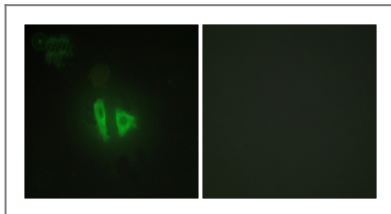
**Tissue specificity**

Expressed in heart, brain, lung, liver, kidney, testis and ovary. Weakly expressed in skeletal muscle, pancreas and spleen.

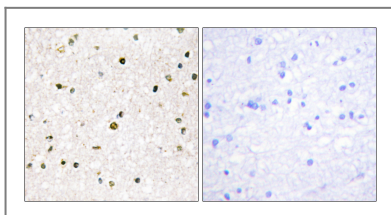
**Function**

Domain:RII-alpha binding site, predicted to form an amphipathic helix, could participate in protein-protein interactions with a complementary surface on the R-subunit dimer.,Function:Binds to type II regulatory subunits of protein kinase A and anchors/targets them.,similarity:Belongs to the AKAP110 family.,subcellular location:Cytoplasmic in premeiotic pachytene spermatocytes and in the centrosome of developing postmeiotic germ cells, while a midpiece/centrosome localization was found in elongating spermatocytes and mature sperm.,tissue specificity:Expressed in heart, brain, lung, liver, kidney, testis and ovary. Weakly expressed in skeletal muscle, pancreas and spleen.,

## Validation Data



Immunofluorescence analysis of HepG2 cells, using AKAP11 Antibody. The picture on the right is blocked with the synthesized peptide.



Immunohistochemistry analysis of paraffin-embedded human brain tissue, using AKAP11 Antibody. The picture on the right is blocked with the synthesized peptide.

## Contact information

Orders: [order.cn@immunoway.com](mailto:order.cn@immunoway.com)  
Support: [support.cn@immunoway.com](mailto:support.cn@immunoway.com)  
Telephone: 400-8787-807(China)  
Website: <http://www.immunoway.com.cn>  
Address: 2200 Ringwood Ave San Jose, CA 95131 USA



Please scan the QR code to access additional product information:  
**AKAP 220 Rabbit pAb**

