

## AK5 Rabbit pAb

CatalogNo: YT0157

### Key Features

#### Host Species

- Rabbit

#### Reactivity

- Human, Mouse

#### Applications

- WB, IHC, IF, ELISA

#### MW

- 25kD (Observed)

#### Isotype

- IgG

### Recommended Dilution Ratios

WB 1:500-1:2000

IHC 1:100-1:300

ELISA 1:5000

IF 1:50-200

### Storage

#### Storage\*

-15°C to -25°C/1 year (Do not lower than -25°C)

#### Formulation

Liquid in PBS containing 50% glycerol, 0.5% BSA and 0.02% sodium azide.

### Basic Information

#### Clonality

Polyclonal

### Immunogen Information

#### Immunogen

The antiserum was produced against synthesized peptide derived from human AK5. AA range: 391-440

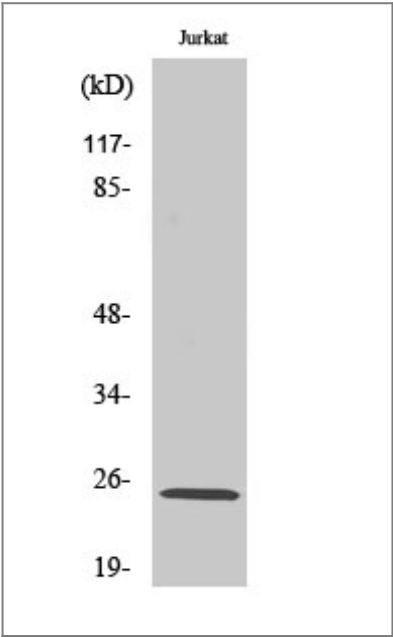
#### Specificity

AK5 Polyclonal Antibody detects endogenous levels of AK5 protein.

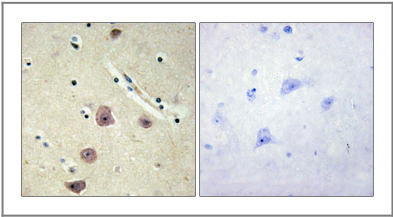
### Target Information

Gene name	AK5		
Protein Name	Adenylate kinase isoenzyme 5		
	Organism	Gene ID	UniProt ID
	Human	<a href="#">26289</a> ;	<a href="#">Q9Y6K8</a> ;
	Mouse	<a href="#">229949</a> ;	<a href="#">Q920P5</a> ;
Cellular Localization	Cytoplasm .		
Tissue specificity	Brain specific.		
Function	Catalytic activity:ATP + AMP = 2 ADP.,Function:Active on AMP and dAMP with ATP as a donor. When GTP is used as phosphate donor, the enzyme phosphorylates AMP, CMP, and to a small extent dCMP.,similarity:Belongs to the adenylate kinase family.,subunit:Monomer.,tissue specificity:Brain specific.,		

| Validation Data



Western Blot analysis of various cells using AK5 Polyclonal Antibody



Immunohistochemistry analysis of paraffin-embedded human brain tissue, using AK5 Antibody. The picture on the right is blocked with the synthesized peptide.

| Contact information

Orders: order.cn@immunoway.com  
Support: support.cn@immunoway.com  
Telephone: 400-8787-807(China)  
Website: <http://www.immunoway.com.cn>  
Address: 2200 Ringwood Ave San Jose, CA 95131 USA



Please scan the QR code  
to access additional  
product information:  
**AK5 Rabbit pAb**

---

For Research Use Only. Not for Use in Diagnostic Procedures.

[Antibody](#) | [ELISA Kits](#) | [Protein](#) | [Reagents](#)