

AIG-1 Rabbit pAb

CatalogNo: YT0150

| Key Features

Host Species

- Rabbit

Reactivity

- Human, Mouse

Applications

- WB, ELISA

MW

- 32kD (Observed)

Isotype

- IgG

| Recommended Dilution Ratios

WB 1:500-1:2000

ELISA 1:40000

Not yet tested in other applications.

| Storage

Storage* -15°C to -25°C/1 year (Do not lower than -25°C)

Formulation Liquid in PBS containing 50% glycerol, 0.5% BSA and 0.02% sodium azide.

| Basic Information

Clonality Polyclonal

| Immunogen Information

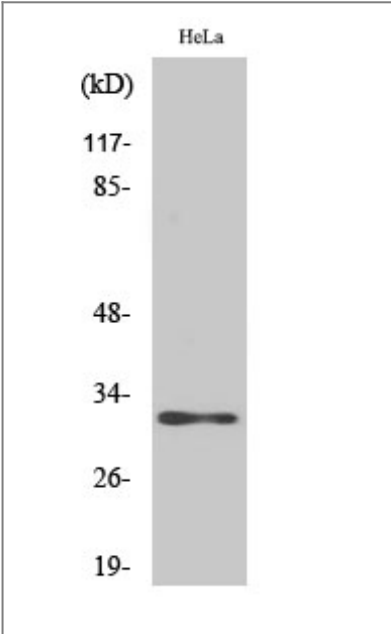
Immunogen The antiserum was produced against synthesized peptide derived from human AIG1. AA range: 196-245

Specificity AIG-1 Polyclonal Antibody detects endogenous levels of AIG-1 protein.

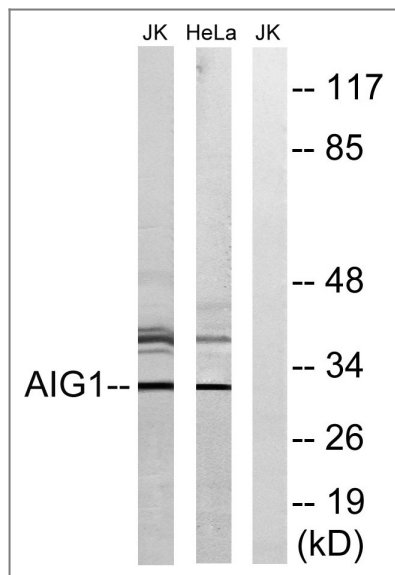
| Target Information

| | | | |
|-----------------------|--|-------------------------|--------------------------|
| Gene name | AIG1 | | |
| Protein Name | Androgen-induced gene 1 protein | | |
| | Organism | Gene ID | UniProt ID |
| | Human | 51390 ; | Q9NVV5 ; |
| | Mouse | | Q9D8B1 ; |
| Cellular Localization | Cell membrane ; Multi-pass membrane protein . | | |
| Tissue specificity | Highly expressed in heart, ovary, testis, liver, and kidney, at lower levels in spleen, prostate, brain, skeletal muscle, pancreas, small intestine and colon, and undetected in peripheral blood leukocytes, thymus, lung and placenta. AIG1 expression is higher in hair follicles from males than from females. | | |
| Function | Function:May play a role in androgen-regulated growth of hair follicles.,induction:By dihydrotestosterone (DHT).,similarity:Belongs to the AIG1 family.,tissue specificity:Highly expressed in heart, ovary, testis, liver, and kidney, at lower levels in spleen, prostate, brain, skeletal muscle, pancreas, small intestine and colon, and undetected in peripheral blood leukocytes, thymus, lung and placenta. AIG1 expression is higher in hair follicles from males than from females., | | |

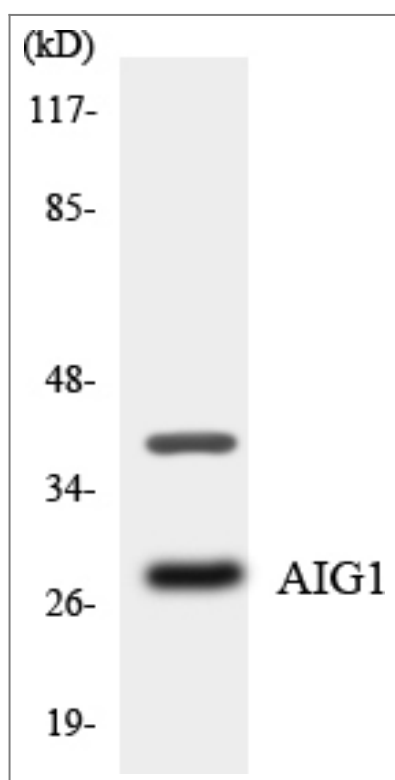
| Validation Data



Western Blot analysis of various cells using AIG-1 Polyclonal Antibody



Western blot analysis of lysates from HeLa and Jurkat cells, using AIG1 Antibody. The lane on the right is blocked with the synthesized peptide.



Western blot analysis of the lysates from HT-29 cells using AIG1 antibody.

Contact information

Orders: order.cn@immunoway.com
 Support: support.cn@immunoway.com
 Telephone: 400-8787-807(China)
 Website: <http://www.immunoway.com.cn>
 Address: 2200 Ringwood Ave San Jose, CA 95131 USA



Please scan the QR code to access additional product information:
AIG-1 Rabbit pAb