

Adenosine A2A-R Rabbit pAb

CatalogNo: YT0129

Key Features

Host Species

- Rabbit

Reactivity

- Human,Rat,Mouse,

Applications

- WB,IHC,IF,ELISA

MW

- 37kD (Observed)

Isotype

- IgG

Recommended Dilution Ratios

WB 1:500-1:2000

IHC 1:100-1:300

IF 1:200-1:1000

ELISA 1:5000

Not yet tested in other applications.

Storage

Storage* -15°C to -25°C/1 year(Do not lower than -25°C)

Formulation Liquid in PBS containing 50% glycerol, 0.5% BSA and 0.02% sodium azide.

Basic Information

Clonality Polyclonal

Immunogen Information

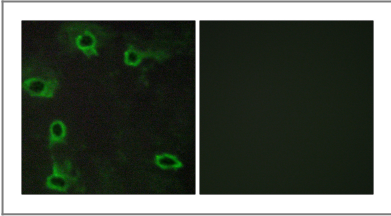
Immunogen The antiserum was produced against synthesized peptide derived from human ADORA2A. AA range:120-169

Specificity Adenosine A2A-R Polyclonal Antibody detects endogenous levels of Adenosine A2A-R protein.

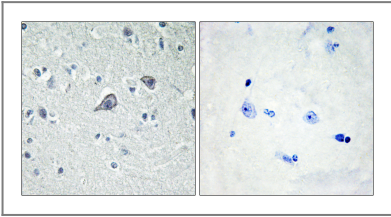
| Target Information

Gene name	ADORA2A		
Protein Name	Adenosine receptor A2a		
	Organism	Gene ID	UniProt ID
	Human	135;	P29274;
	Mouse		Q60613;
Cellular Localization	Cell membrane ; Multi-pass membrane protein . Colocalizes with GAS2L2 at neuronal processes. .		
Tissue specificity	Brain,Hippocampus,Lymph,Thymus,		
Function	Function:Receptor for adenosine. The activity of this receptor is mediated by G proteins which activate adenylyl cyclase.,similarity:Belongs to the G-protein coupled receptor 1 family.,		

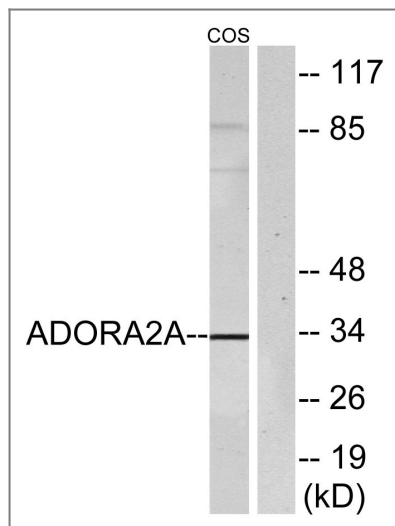
| Validation Data



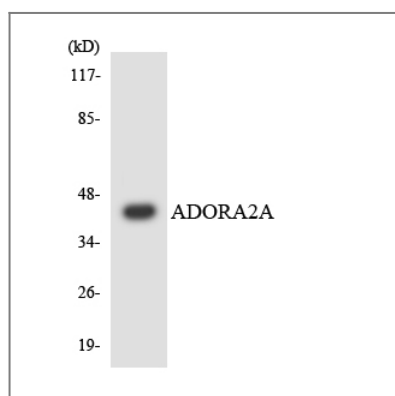
Immunofluorescence analysis of COS7 cells, using ADORA2A Antibody. The picture on the right is blocked with the synthesized peptide.



Immunohistochemistry analysis of paraffin-embedded human brain tissue, using ADORA2A Antibody. The picture on the right is blocked with the synthesized peptide.



Western blot analysis of ADORA2A Antibody. The lane on the right is blocked with the ADORA2A peptide.



Western blot analysis of the lysates from HepG2 cells using ADORA2A antibody.

Contact information

Orders: order.cn@immunoway.com
 Support: support.cn@immunoway.com
 Telephone: 400-8787-807(China)
 Website: <http://www.immunoway.com.cn>
 Address: 2200 Ringwood Ave San Jose, CA 95131 USA



Please scan the QR code to access additional product information:
Adenosine A2A-R
Rabbit pAb

For Research Use Only. Not for Use in Diagnostic Procedures.

[Antibody](#) | [ELISA Kits](#) | [Protein](#) | [Reagents](#)