

ACTR-IB Rabbit pAb

CatalogNo: YT0106

Key Features

Host Species

- Rabbit

Reactivity

- Human, Mouse, Rat

Applications

- WB, IHC, IF, ELISA

MW

- 56kD (Observed)

Isotype

- IgG

Storage

Storage* -15°C to -25°C/1 year (Do not lower than -25°C)

Formulation Liquid in PBS containing 50% glycerol, 0.5% BSA and 0.02% sodium azide.

Recommended Dilution Ratios

WB 1:500-1:2000

IHC 1:100-1:300

IF 1:200-1:1000

ELISA 1:5000

Not yet tested in other applications.

Basic Information

Clonality Polyclonal

Immunogen Information

Immunogen The antiserum was produced against synthesized peptide derived from human ACV1B. AA range:73-122

Specificity ACTR-IB Polyclonal Antibody detects endogenous levels of ACTR-IB protein.

Target Information

Gene name ACVR1B

Protein Name Activin receptor type-1B

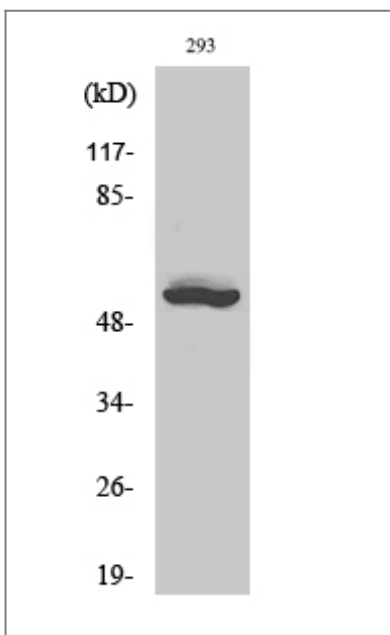
Organism	Gene ID	UniProt ID
Human	91 ;	P36896 ;
Mouse	11479 ;	Q61271 ;
Rat	29381 ;	P80202 ;

Cellular Localization Cell membrane ; Single-pass type I membrane protein .

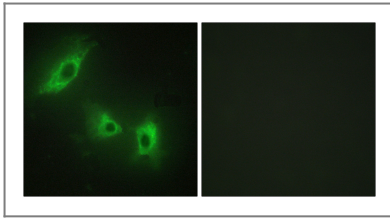
Tissue specificity Expressed in many tissues, most strongly in kidney, pancreas, brain, lung, and liver.

Function Catalytic activity:ATP + [receptor-protein] = ADP + [receptor-protein] phosphate.,cofactor:Magnesium or manganese.,Function:On ligand binding, forms a receptor complex consisting of two type II and two type I transmembrane serine/threonine kinases. Type II receptors phosphorylate and activate type I receptors which autophosphorylate, then bind and activate SMAD transcriptional regulators. Phosphorylates TTRAP.,PTM:Autophosphorylated.,similarity:Belongs to the protein kinase superfamily. TKL Ser/Thr protein kinase family. TGFBR receptor subfamily.,similarity:Contains 1 GS domain.,similarity:Contains 1 protein kinase domain.,subunit:Interacts with AIP1. Part of a complex consisting of AIP1, ACVR2A, ACVR1B and SMAD3. Interacts with TTRAP.,tissue specificity:Expressed in many tissues, most strongly in kidney, pancreas, brain, lung, and liver.,

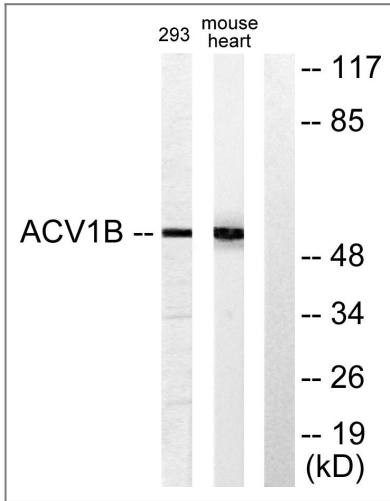
Validation Data



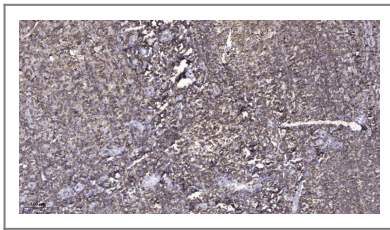
Western Blot analysis of various cells using ACTR-1B Polyclonal Antibody diluted at 1:1000



Immunofluorescence analysis of HeLa cells, using ACV1B Antibody. The picture on the right is blocked with the synthesized peptide.



Western blot analysis of lysates from 293 and mouse liver cells, using ACV1B Antibody. The lane on the right is blocked with the synthesized peptide.



Immunohistochemical analysis of paraffin-embedded human tonsil. 1, Antibody was diluted at 1:200(4° overnight). 2, Tris-EDTA,pH9.0 was used for antigen retrieval. 3,Secondary antibody was diluted at 1:200(room temperature, 45min).

Contact information

Orders: order.cn@immunoway.com
Support: support.cn@immunoway.com
Telephone: 400-8787-807(China)
Website: <http://www.immunoway.com.cn>
Address: 2200 Ringwood Ave San Jose, CA 95131 USA



Please scan the QR code to access additional product information:
ACTR-IB Rabbit pAb

For Research Use Only. Not for Use in Diagnostic Procedures.

[Antibody](#) | [ELISA Kits](#) | [Protein](#) | [Reagents](#)