

## Actinin- $\alpha$ 1/2/3/4 Rabbit pAb

CatalogNo: YT0101

### Key Features

#### Host Species

- Rabbit

#### Reactivity

- Human, Mouse, Rat

#### Applications

- WB, IHC, IF, ELISA

#### MW

- 75kD (Observed)

#### Isotype

- IgG

### Storage

**Storage\*** -15°C to -25°C/1 year (Do not lower than -25°C)

**Formulation** Liquid in PBS containing 50% glycerol, 0.5% BSA and 0.02% sodium azide.

### Recommended Dilution Ratios

**WB 1:500-1:2000**

**IHC 1:100-1:300**

**ELISA 1:20000**

**IF 1:50-200**

### Basic Information

**Clonality** Polyclonal

### Immunogen Information

**Immunogen** The antiserum was produced against synthesized peptide derived from human ACTN1/2/3/4. AA range:21-70

**Specificity** Actinin- $\alpha$ 1/2/3/4 Polyclonal Antibody detects endogenous levels of Actinin- $\alpha$ 1/2/3/4 protein.

## Target Information

**Gene name** ACTN1/2/3/4

**Protein Name** Alpha-actinin-1/2/3/4

Organism	Gene ID	UniProt ID
Human	<a href="#">87</a> ; <a href="#">88</a> ; <a href="#">89</a> ; <a href="#">81</a> ;	<a href="#">P12814</a> ; <a href="#">P35609</a> ; <a href="#">Q08043</a> ; <a href="#">O43707</a> ;
Mouse	<a href="#">109711</a> ; <a href="#">11472</a> ; <a href="#">11474</a> ; <a href="#">60595</a> ;	
Rat	<a href="#">81634</a> ; <a href="#">63836</a> ;	<a href="#">Q9Z1P2</a> ; <a href="#">Q9QXQ0</a> ;

**Cellular Localization**

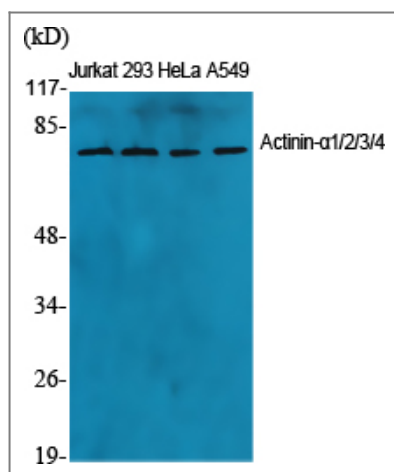
Cytoplasm, cytoskeleton . Cytoplasm, myofibril, sarcomere, Z line . Cell membrane . Cell junction . Cell projection, ruffle . Colocalizes with MYOZ2 and PPP3CA at the Z-line of heart and skeletal muscle. Colocalizes with PSD in membrane ruffles and central reticular structures. .

**Tissue specificity** Colon, Epithelium, Hepatocyte, Neuroblastoma, Placenta, Platelet, Skin, Tumor of tongue,

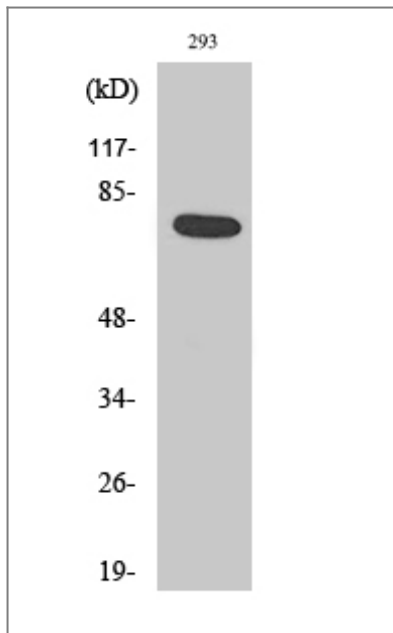
**Function**

Function: F-actin cross-linking protein which is thought to anchor actin to a variety of intracellular structures. This is a bundling protein., similarity: Belongs to the alpha-actinin family., similarity: Contains 1 actin-binding domain., similarity: Contains 2 CH (calponin-homology) domains., similarity: Contains 2 EF-hand domains., similarity: Contains 4 spectrin repeats., subcellular location: Colocalizes with MYOZ2 and PPP3CA at the Z-line of heart and skeletal muscle., subunit: Homodimer; antiparallel. Interacts with DDN, MYOZ2, PDLIM2, TTID and LPP.,

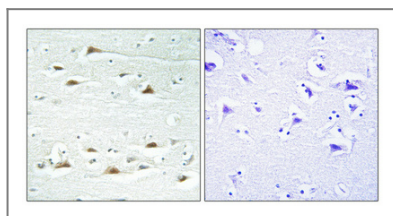
## Validation Data



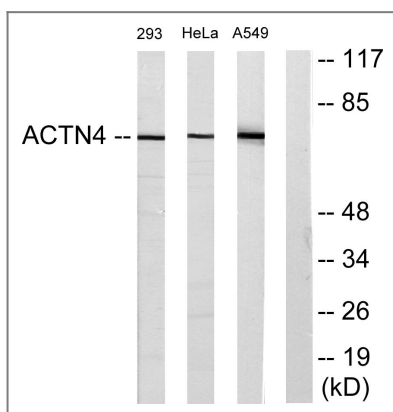
Western Blot analysis of various cells using Actinin- $\alpha$ 1/2/3/4 Polyclonal Antibody diluted at 1:1000



Western Blot analysis of A549 cells using Actinin- $\alpha$ 1/2/3/4 Polyclonal Antibody diluted at 1:1000



Immunohistochemical analysis of paraffin-embedded Human brain. Antibody was diluted at 1:100(4° overnight). High-pressure and temperature Tris-EDTA,pH8.0 was used for antigen retrieval. Negative contrl (right) obtained from antibody was pre-absorbed by immunogen peptide.



Western blot analysis of lysates from 293, HeLa, and A549 cells, using ACTN1/2/3/4 Antibody. The lane on the right is blocked with the synthesized peptide.

## Contact information

Orders: order.cn@immunoway.com  
 Support: support.cn@immunoway.com  
 Telephone: 400-8787-807(China)  
 Website: <http://www.immunoway.com.cn>  
 Address: 2200 Ringwood Ave San Jose, CA 95131 USA



Please scan the QR code to access additional product information:  
**Actinin- $\alpha$ 1/2/3/4 Rabbit pAb**