

## ACSVL6 Rabbit pAb

CatalogNo: YT0095

### Key Features

#### Host Species

- Rabbit

#### Reactivity

- Human,Rat,Mouse,

#### Applications

- WB,IHC,IF,ELISA

#### MW

- 75kD (Observed)

#### Isotype

- IgG

### Recommended Dilution Ratios

**WB 1:500-1:2000**

**IHC 1:100-1:300**

**IF 1:200-1:1000**

**ELISA 1:40000**

**Not yet tested in other applications.**

### Storage

**Storage\*** -15°C to -25°C/1 year(Do not lower than -25°C)

**Formulation** Liquid in PBS containing 50% glycerol, 0.5% BSA and 0.02% sodium azide.

### Basic Information

**Clonality** Polyclonal

### Immunogen Information

**Immunogen** The antiserum was produced against synthesized peptide derived from human SLC27A5. AA range:481-530

**Specificity** ACSVL6 Polyclonal Antibody detects endogenous levels of ACSVL6 protein.

## Target Information

**Gene name** SLC27A5  
**Protein Name** Bile acyl-CoA synthetase

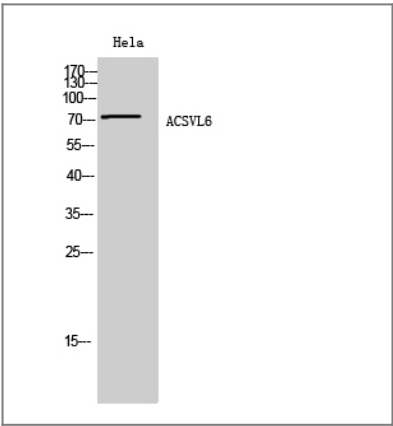
Organism	Gene ID	UniProt ID
Human	<a href="#">10998</a> ;	<a href="#">Q9Y2P5</a> ;
Mouse		<a href="#">Q4LDG0</a> ;

**Cellular Localization** Endoplasmic reticulum membrane ; Multi-pass membrane protein . Microsome . Cell membrane ; Multi-pass membrane protein .

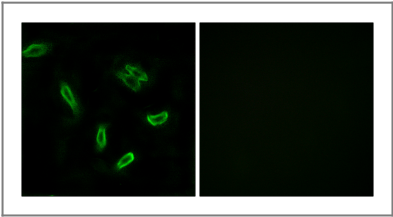
**Tissue specificity** Predominantly expressed in liver.

**Function** Catalytic activity:ATP + (25R)-3-alpha,7-alpha,12-alpha-trihydroxy-5-beta-cholestan-26-oate + CoA = AMP + diphosphate + (25R)-3-alpha,7-alpha,12-alpha-trihydroxy-5-beta-cholestanoyl-CoA.,Catalytic activity:ATP + cholate + CoA = AMP + diphosphate + choloyl-CoA.,Function:Acyl-CoA synthetase involved in bile acid metabolism. Proposed to catalyze the first step in the conjugation of C24 bile acids (choloneates) to glycine and taurine before excretion into bile canaliculi by activating them to their CoA thioesters. Seems to activate secondary bile acids entering the liver from the enterohepatic circulation. In vitro, also activates 3-alpha,7-alpha,12-alpha-trihydroxy-5-beta-cholestanate (THCA), the C27 precursor of cholic acid deriving from the de novo synthesis from cholesterol.,similarity:Belongs to the ATP-dependent AMP-binding enzyme family.,tissue specificity:Predominantly expressed in liver.,

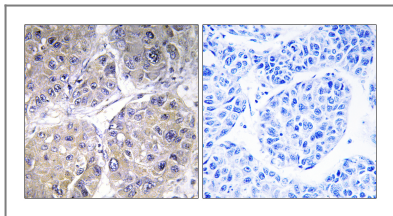
## Validation Data



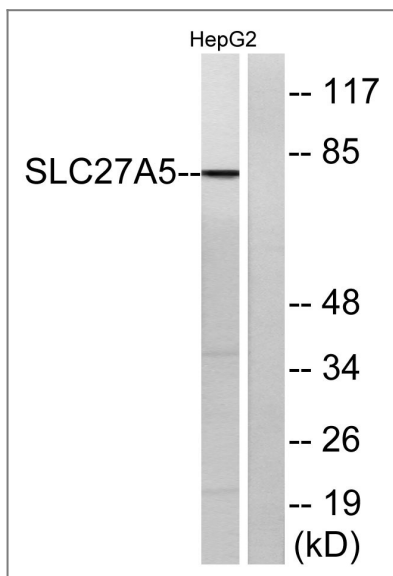
Western Blot analysis of HeLa cells using ACSVL6 Polyclonal Antibody diluted at 1:1000



Immunofluorescence analysis of A549 cells, using SLC27A5 Antibody. The picture on the right is blocked with the synthesized peptide.



Immunohistochemistry analysis of paraffin-embedded human liver carcinoma tissue, using SLC27A5 Antibody. The picture on the right is blocked with the synthesized peptide.



Western blot analysis of lysates from HepG2 cells, using SLC27A5 Antibody. The lane on the right is blocked with the synthesized peptide.

## Contact information

Orders: order.cn@immunoway.com  
 Support: support.cn@immunoway.com  
 Telephone: 400-8787-807(China)  
 Website: <http://www.immunoway.com.cn>  
 Address: 2200 Ringwood Ave San Jose, CA 95131 USA



Please scan the QR code to access additional product information:  
**ACSVL6 Rabbit pAb**

For Research Use Only. Not for Use in Diagnostic Procedures.

[Antibody](#) | [ELISA Kits](#) | [Protein](#) | [Reagents](#)