

ACSVL4 Rabbit pAb

CatalogNo: YT0094

Key Features

Host Species

- Rabbit

Reactivity

- Human, Mouse

Applications

- IF, ELISA

MW

- 72kD (Calculated)

Isotype

- IgG

Recommended Dilution Ratios

IF 1:200-1:1000

ELISA 1:20000

Not yet tested in other applications

Storage

Storage*

-15°C to -25°C/1 year (Do not lower than -25°C)

Formulation

Liquid in PBS containing 50% glycerol, 0.5% BSA and 0.02% sodium azide.

Basic Information

Clonality

Polyclonal

Immunogen Information

Immunogen

The antiserum was produced against synthesized peptide derived from human SLC27A4. AA range: 61-110

Specificity

ACSVL4 Polyclonal Antibody detects endogenous levels of ACSVL4 protein.

Target Information

Gene name SLC27A4

Protein Name Long-chain fatty acid transport protein 4

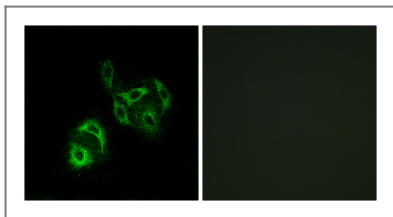
Organism	Gene ID	UniProt ID
Human	10999 ;	Q6P1M0 ;
Mouse		Q91VE0 ;

Cellular Localization Endoplasmic reticulum membrane ; Multi-pass membrane protein .

Tissue specificity Expressed at highest levels in brain, testis, colon and kidney. Expressed at medium levels in heart and liver, small intestine and stomach. Expressed at low levels in peripheral leukocytes, bone marrow, skeletal muscle and aorta. Expressed in adipose tissue (PubMed:24269233, PubMed:9878842). Expressed in brain gray matter (PubMed:21395585).

Function Function:Involved in translocation of long-chain fatty acids (LFCA) across the plasma membrane. Appears to be the principal fatty acid transporter in small intestinal enterocytes. Plays a role in the formation of the epidermal barrier. Required for fat absorption in early embryogenesis. Has acyl-CoA ligase activity for long-chain and very-long-chain fatty acids.,miscellaneous:SLC27A4/FATP4-mediated fatty acid uptake is associated to paramaters related to insulin resistance, which is associated with disturbed fatty acid metabolism and homeostasis, such as obesity. SLC27A4/FATP4 expression is positively correlated with aquired obesity.,similarity:Belongs to the ATP-dependent AMP-binding enzyme family.,tissue specificity:Expressed at highest levels in brain, testis, colon and kidney. Expressed at medium levels in heart and liver, small intestine and stomach. Expressed at low levels in peripheral leukocytes, bone marrow, skeletal muscle and aorta. Expressed in adipose tissue.,

Validation Data



Immunofluorescence analysis of A549 cells, using SLC27A4 Antibody. The picture on the right is blocked with the synthesized peptide.

Contact information

Orders: order.cn@immunoway.com
Support: support.cn@immunoway.com
Telephone: 400-8787-807(China)
Website: <http://www.immunoway.com.cn>
Address: 2200 Ringwood Ave San Jose, CA 95131 USA



Please scan the QR code to access additional product information:
ACSVL4 Rabbit pAb

