

## ACOT12 Rabbit pAb

CatalogNo: YT0086

### Key Features

#### Host Species

- Rabbit

#### Reactivity

- Human, Mouse, Rat

#### Applications

- IHC, IF, ELISA

#### MW

- 62kD (Calculated)

#### Isotype

- IgG

### Recommended Dilution Ratios

IHC 1:100-1:300

IF 1:200-1:1000

ELISA 1:40000

Not yet tested in other applications.

### Storage

#### Storage\*

-15°C to -25°C/1 year (Do not lower than -25°C)

#### Formulation

Liquid in PBS containing 50% glycerol, 0.5% BSA and 0.02% sodium azide.

### Basic Information

#### Clonality

Polyclonal

### Immunogen Information

#### Immunogen

The antiserum was produced against synthesized peptide derived from human ACOT12. AA range: 281-330

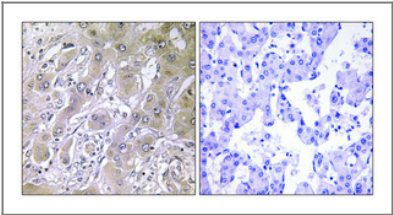
#### Specificity

ACOT12 Polyclonal Antibody detects endogenous levels of ACOT12 protein.

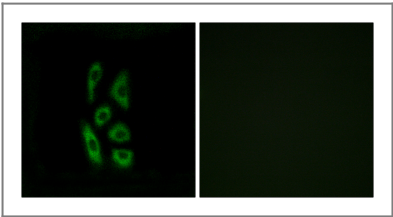
### Target Information

Gene name	ACOT12		
Protein Name	Acyl-coenzyme A thioesterase 12		
	Organism	Gene ID	UniProt ID
	Human	<a href="#">134526</a> ;	<a href="#">Q8WYK0</a> ;
	Mouse	<a href="#">74156</a> ;	<a href="#">Q9DBK0</a> ;
	Rat	<a href="#">170570</a> ;	<a href="#">Q99NB7</a> ;
Cellular Localization	Cytoplasm, cytosol .		
Tissue specificity	Chondrosarcoma Lung Metastasis,Liver,		
Function	Catalytic activity:Acetyl-CoA + H(2)O = CoA + acetate.,Function:Hydrolyzes acetyl-CoA to acetate and CoA.,pathway:Carbohydrate metabolism; pyruvate metabolism.,similarity:Contains 1 START domain.,similarity:Contains 2 acyl coenzyme A hydrolase domains.,subunit:Homodimer or homotetramer.,		

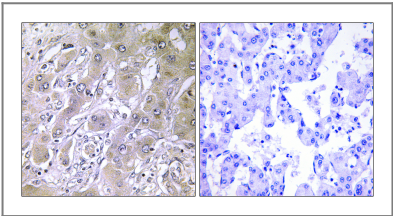
| Validation Data



Immunohistochemical analysis of paraffin-embedded Human lung cancer. Antibody was diluted at 1:100(4° overnight). High-pressure and temperature Tris-EDTA,pH8.0 was used for antigen retrieval. Negative contrl (right) obtained from antibody was pre-absorbed by immunogen peptide.



Immunofluorescence analysis of A549 cells, using ACOT12 Antibody. The picture on the right is blocked with the synthesized peptide.



Immunohistochemistry analysis of paraffin-embedded human liver carcinoma tissue, using ACOT12 Antibody. The picture on the right is blocked with the synthesized peptide.

| Contact information

Orders: order.cn@immunoway.com  
Support: support.cn@immunoway.com  
Telephone: 400-8787-807(China)  
Website: <http://www.immunoway.com.cn>  
Address: 2200 Ringwood Ave San Jose, CA 95131 USA



Please scan the QR code  
to access additional  
product information:  
**ACOT12 Rabbit pAb**

---

For Research Use Only. Not for Use in Diagnostic Procedures.

[Antibody](#) | [ELISA Kits](#) | [Protein](#) | [Reagents](#)