

## ACBP Rabbit pAb

CatalogNo: YT0073

### Key Features

#### Host Species

- Rabbit

#### Reactivity

- Human, Mouse, Rat

#### Applications

- WB, IHC, IF, ELISA

#### MW

- 10kD (Observed)

#### Isotype

- IgG

### Recommended Dilution Ratios

**WB 1:500-1:2000**

**IHC 1:100-1:300**

**ELISA 1:10000**

**IF 1:50-200**

### Storage

**Storage\*** -15°C to -25°C/1 year (Do not lower than -25°C)

**Formulation** Liquid in PBS containing 50% glycerol, 0.5% BSA and 0.02% sodium azide.

### Basic Information

**Clonality** Polyclonal

### Immunogen Information

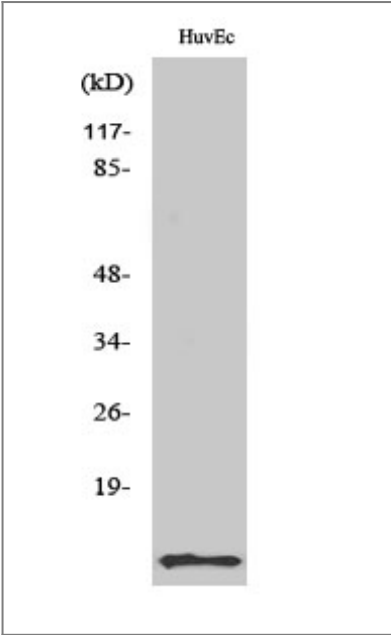
**Immunogen** The antiserum was produced against synthesized peptide derived from human ACBP. AA range: 25-74

**Specificity** ACBP Polyclonal Antibody detects endogenous levels of ACBP protein.

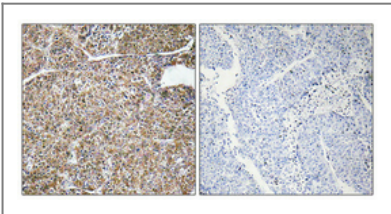
### Target Information

Gene name	DBI		
Protein Name	Acyl-CoA-binding protein		
	Organism	Gene ID	UniProt ID
	Human	<a href="#">1622</a> ;	<a href="#">P07108</a> ;
	Mouse	<a href="#">13167</a> ;	<a href="#">P31786</a> ;
	Rat	<a href="#">25045</a> ;	<a href="#">P11030</a> ;
Cellular Localization	Endoplasmic reticulum . Golgi apparatus . Golgi localization is dependent on ligand binding (PubMed:17953517). .		
Tissue specificity	Isoform 1 is ubiquitous, with a moderate expression level. Isoform 2 is ubiquitous with high level in liver and adipose tissue. Isoform 3 is ubiquitous with strong expression in adipose tissue and heart.		
Function	Function: Binds medium- and long-chain acyl-CoA esters with very high affinity and may function as an intracellular carrier of acyl-CoA esters. It is also able to displace diazepam from the benzodiazepine (BZD) recognition site located on the GABA type A receptor. It is therefore possible that this protein also acts as a neuropeptide to modulate the action of the GABA receptor.,similarity: Belongs to the ACBP family.,similarity: Contains 1 ACB (acyl-CoA-binding) domain.,subunit: Monomer.,		

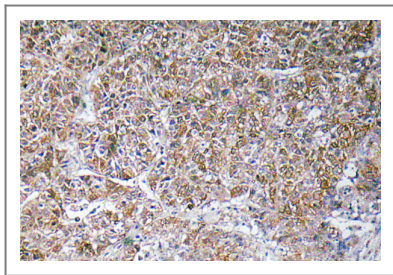
| Validation Data



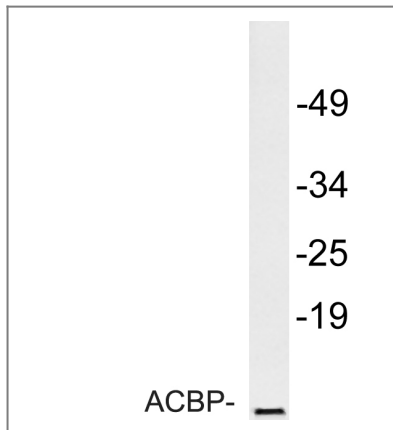
Western Blot analysis of various cells using ACBP Polyclonal Antibody



Immunohistochemical analysis of paraffin-embedded Human lung cancer. Antibody was diluted at 1:100(4° overnight). High-pressure and temperature Tris-EDTA,pH8.0 was used for antigen retrieval. Negative contrl (right) obtaned from antibody was pre-absorbed by immunogen peptide.



Immunohistochemistry analysis of ACBP antibody in paraffin-embedded human liver carcinoma tissue.



Western blot analysis of lysate from HuvEc cells, using ACBP antibody.

## **Contact information**

Orders: [order.cn@immunoway.com](mailto:order.cn@immunoway.com)  
 Support: [support.cn@immunoway.com](mailto:support.cn@immunoway.com)  
 Telephone: 400-8787-807(China)  
 Website: <http://www.immunoway.com.cn>  
 Address: 2200 Ringwood Ave San Jose, CA 95131 USA



Please scan the QR code  
 to access additional  
 product information:  
**ACBP Rabbit pAb**

For Research Use Only. Not for Use in Diagnostic Procedures.

[Antibody](#) | [ELISA Kits](#) | [Protein](#) | [Reagents](#)