

Abi-1 Rabbit pAb

CatalogNo: YT0065

Orthogonal Validated 

Key Features

Host Species

- Rabbit

Reactivity

- Human, Mouse, Rat

Applications

- WB, ELISA

MW

- 55kD (Observed)

Isotype

- IgG

Recommended Dilution Ratios

WB 1:500-1:2000**ELISA 1:40000****Not yet tested in other applications.**

Storage

Storage* -15°C to -25°C/1 year (Do not lower than -25°C)**Formulation** Liquid in PBS containing 50% glycerol, 0.5% BSA and 0.02% sodium azide.

Basic Information

Clonality Polyclonal

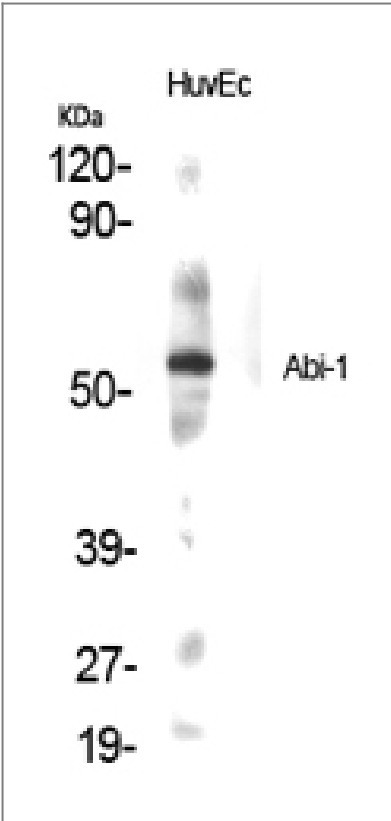
Immunogen Information

Immunogen The antiserum was produced against synthesized peptide derived from human Abi-1. AA range:152-201**Specificity** Abi-1 Polyclonal Antibody detects endogenous levels of Abi-1 protein.

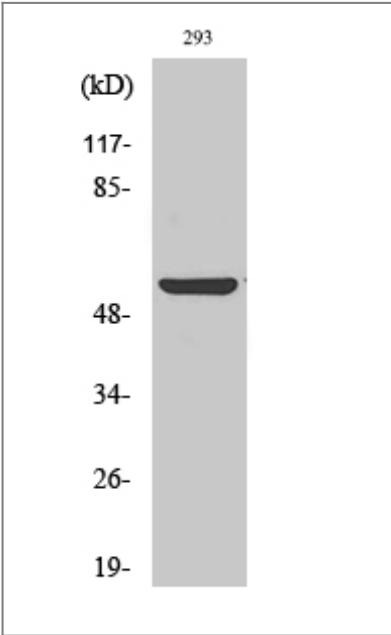
Target Information

Gene name	ABI1		
Protein Name	Abl interactor 1		
	Organism	Gene ID	UniProt ID
	Human	10006 ;	Q8IZP0 ;
	Mouse	11308 ;	Q8CBW3 ;
	Rat		Q9QZM5 ;
Cellular Localization	Cytoplasm . Nucleus . Cell projection, lamellipodium . Cell projection, filopodium . Cell projection, growth cone . Cell junction, synapse, postsynaptic density . Cytoplasm, cytoskeleton . Localized to protruding lamellipodia and filopodia tips. Also localized to neuronal growth cones and synaptosomes. May shuttle from the postsynaptic densities to the nucleus (By similarity). .		
Tissue specificity	Widely expressed, with highest expression in brain.		
Function	<p>Alternative products:Additional isoforms seem to exist,Disease:A chromosomal aberration involving ABI1 is a cause of acute leukemias. Translocation t(10;11)(p11.2;q23) with MLL. ABI1 isoform 2 was found to be present in acute leukemia MLL-ABI1 fusion transcript.,Domain:The t-SNARE coiled-coil homology domain is necessary and sufficient for interaction with STX1A.,Function:May act in negative regulation of cell growth and transformation by interacting with nonreceptor tyrosine kinases ABL1 and/or ABL2. May play a role in regulation of EGF-induced Erk pathway activation. Involved in cytoskeletal reorganization and EGFR signaling. Together with EPS8 participates in transduction of signals from Ras to Rac. In vitro, a trimeric complex of ABI1, EPS8 and SOS1 exhibits Rac specific guanine nucleotide exchange factor (GEF) activity and ABI1 seems to act as an adapter in the complex. Regulates ABL1/c-Abl-mediated phosphorylation of MENA. Recruits WASF1 to lamellipodia and there seems to regulate WASF1 protein level.,PTM:In vitro substrate for v-Abl (By similarity). Phosphorylated on tyrosine residues after serum stimulation or induction by v-Abl.,similarity:Belongs to the ABI family.,similarity:Contains 1 SH3 domain.,similarity:Contains 1 t-SNARE coiled-coil homology domain.,subcellular location:Localized to protruding lamellipodia and filopodia tips. Also localized to neuronal growth cones and synaptosomes.,subunit:Interacts with ABL1, MENA, STX1A, SNAP25, VAMP2, EPS8, and through its N-terminus with WASF1. Part of a complex consisting of ABI1, STX1A and SNAP25. Part of a complex consisting of ABI1, EPS8 and SOS1 (By similarity). Interacts with SOS1, SOS2, GRB2, SPTA1 and the first SH3 domain of NCK1. Isoform 6 does not interact with NCK1. Component of the WAVE2 complex composed of ABI1, CYFIP1/SRA1, NCKAP1/NAP1 and WASF2/WAVE2.,tissue specificity:Widely expressed, with highest expression in brain.,</p>		

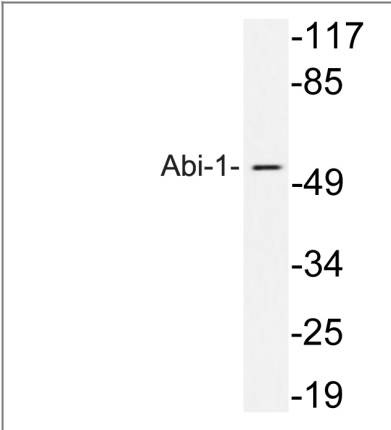
| Validation Data



Western Blot analysis of various cells using Abi-1 Polyclonal Antibody



Western Blot analysis of 293 cells using Abi-1 Polyclonal Antibody



Western blot analysis of lysates from 293 cells treated with TNF, using Abi-1 antibody.

| Contact information

Orders: order.cn@immunoway.com
Support: support.cn@immunoway.com
Telephone: 400-8787-807(China)
Website: <http://www.immunoway.com.cn>
Address: 2200 Ringwood Ave San Jose, CA 95131 USA



Please scan the QR code
to access additional
product information:

Abi-1 Rabbit pAb

For Research Use Only. Not for Use in Diagnostic Procedures.

[Antibody](#) | [ELISA Kits](#) | [Protein](#) | [Reagents](#)