

ABHD2 Rabbit pAb

CatalogNo: YT0059

Key Features

Host Species

- Rabbit

Reactivity

- Human, Mouse

Applications

- WB, IF, ELISA

MW

- 48kD (Observed)

Isotype

- IgG

Recommended Dilution Ratios

WB 1:500-1:2000

IF 1:200-1:1000

ELISA 1:40000

Not yet tested in other applications.

Storage

Storage*

-15°C to -25°C/1 year (Do not lower than -25°C)

Formulation

Liquid in PBS containing 50% glycerol, 0.5% BSA and 0.02% sodium azide.

Basic Information

Clonality

Polyclonal

Immunogen Information

Immunogen

The antiserum was produced against synthesized peptide derived from human ABHD2. AA range: 251-300

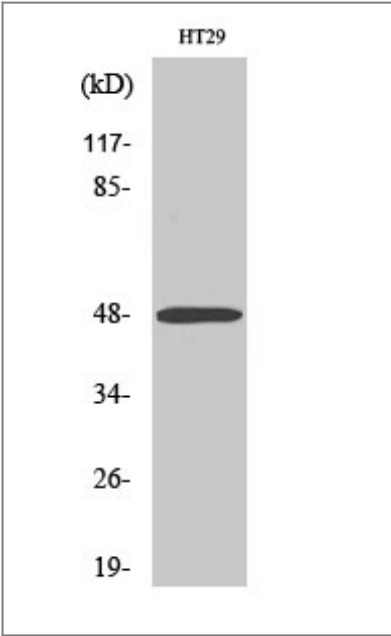
Specificity

ABHD2 Polyclonal Antibody detects endogenous levels of ABHD2 protein.

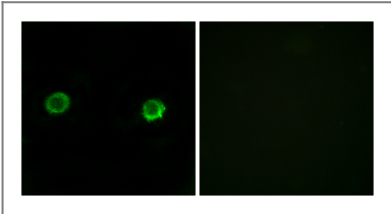
Target Information

Gene name	ABHD2		
Protein Name	Abhydrolase domain-containing protein 2		
	Organism	Gene ID	UniProt ID
	Human	11057 ;	P08910 ;
	Mouse	54608 ;	Q9QXM0 ;
Cellular Localization	Cell projection, cilium, flagellum membrane ; Single-pass type II membrane protein . Cell membrane ; Single-pass type II membrane protein .		
Tissue specificity	Present in sperm (at protein level).		
Function	Caution:Was originally (PubMed:2843827) thought to be a G-coupled receptor.,Function:May play a role in smooth muscle cells migration.,similarity:Belongs to the AB hydrolase superfamily. AB hydrolase 4 family.,		

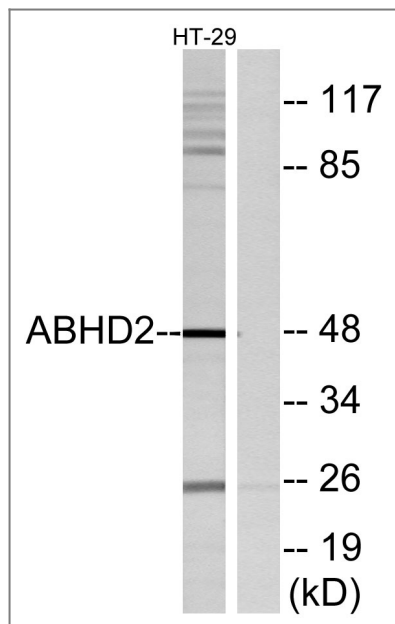
| Validation Data



Western Blot analysis of various cells using ABHD2 Polyclonal Antibody



Immunofluorescence analysis of MCF-7 cells, using ABHD2 Antibody. The picture on the right is blocked with the synthesized peptide.



Western blot analysis of lysates from HT29 cells, using ABHD2 Antibody. The lane on the right is blocked with the synthesized peptide.

Contact information

Orders: order.cn@immunoway.com
 Support: support.cn@immunoway.com
 Telephone: 400-8787-807(China)
 Website: <http://www.immunoway.com.cn>
 Address: 2200 Ringwood Ave San Jose, CA 95131 USA



Please scan the QR code
to access additional
product information:
ABHD2 Rabbit pAb

For Research Use Only. Not for Use in Diagnostic Procedures.

[Antibody](#) | [ELISA Kits](#) | [Protein](#) | [Reagents](#)