

A Cyclase VII Rabbit pAb

CatalogNo: YT0034

Key Features

Host Species

- Rabbit

Reactivity

- Human, Mouse

Applications

- IHC, IF, ELISA

MW

- 120kD (Calculated)

Isotype

- IgG

Recommended Dilution Ratios

IHC 1:100-1:300

IF 1:200-1:1000

ELISA 1:5000

Not yet tested in other applications.

Storage

Storage*

-15°C to -25°C/1 year (Do not lower than -25°C)

Formulation

Liquid in PBS containing 50% glycerol, 0.5% BSA and 0.02% sodium azide.

Basic Information

Clonality

Polyclonal

Immunogen Information

Immunogen

The antiserum was produced against synthesized peptide derived from human ADCY7. AA range: 191-240

Specificity

A Cyclase VII Polyclonal Antibody detects endogenous levels of A Cyclase VII protein.

Target Information

Gene name ADCY7

Protein Name Adenylate cyclase type 7

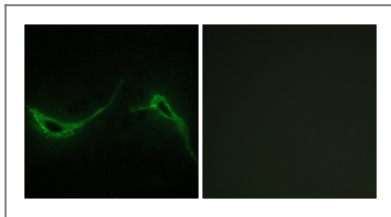
Organism	Gene ID	UniProt ID
Human	113 ;	P51828 ;
Mouse	11513 ;	P51829 ;

Cellular Localization Membrane; Multi-pass membrane protein.

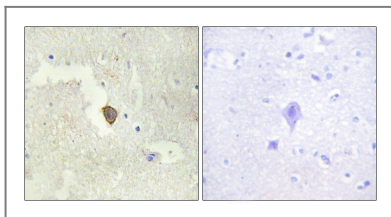
Tissue specificity Blood,Bone marrow,

Function Catalytic activity:ATP = 3',5'-cyclic AMP + diphosphate.,cofactor:Binds 2 magnesium ions per subunit.,Function:This is a membrane-bound, calcium-inhibitable adenyl cyclase.,similarity:Belongs to the adenyl cyclase class-4/guanylyl cyclase family.,similarity:Contains 2 guanylate cyclase domains.,

Validation Data



Immunofluorescence analysis of NIH/3T3 cells, using ADCY7 Antibody. The picture on the right is blocked with the synthesized peptide.



Immunohistochemistry analysis of paraffin-embedded human brain tissue, using ADCY7 Antibody. The picture on the right is blocked with the synthesized peptide.

Contact information

Orders: order.cn@immunoway.com
Support: support.cn@immunoway.com
Telephone: 400-8787-807(China)
Website: <http://www.immunoway.com.cn>
Address: 2200 Ringwood Ave San Jose, CA 95131 USA



Please scan the QR code to access additional product information:
A Cyclase VII Rabbit pAb