

A Cyclase V/VI Rabbit pAb

CatalogNo: YT0032

Key Features

Host Species

- Rabbit

Reactivity

- Human, Mouse, Rat

Applications

- WB, IHC, IF, ELISA

MW

- 138kD (Observed)

Isotype

- IgG

Recommended Dilution Ratios

WB 1:500-1:2000

IHC 1:100-1:300

IF 1:200-1:1000

ELISA 1:10000

Not yet tested in other applications.

Storage

Storage* -15°C to -25°C/1 year (Do not lower than -25°C)

Formulation Liquid in PBS containing 50% glycerol, 0.5% BSA and 0.02% sodium azide.

Basic Information

Clonality Polyclonal

Immunogen Information

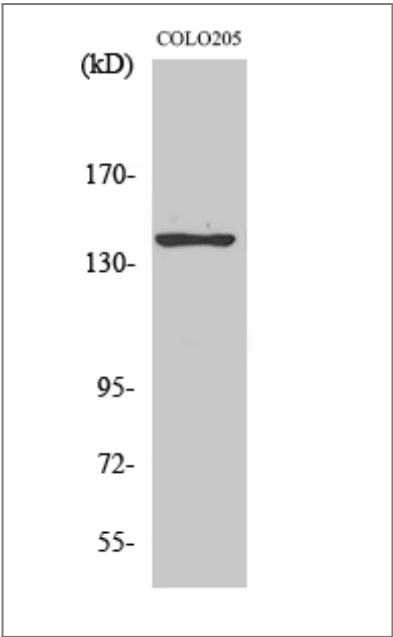
Immunogen The antiserum was produced against synthesized peptide derived from human ADCY5/6. AA range: 931-980

Specificity A Cyclase V/VI Polyclonal Antibody detects endogenous levels of A Cyclase V/VI protein.

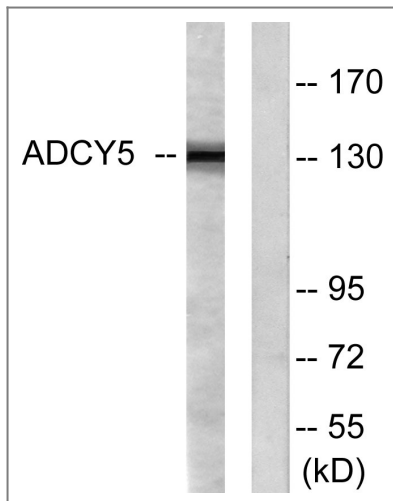
Target Information

Gene name	ADCY5/ADCY6		
Protein Name	Adenylate cyclase type 5/6		
	Organism	Gene ID	UniProt ID
	Human	111 ; 112 ;	Q95622 ; Q43306 ;
	Mouse	224129 ; 11512 ;	
	Rat	64532 ;	Q04400 ; Q03343 ;
Cellular Localization	Cell membrane ; Multi-pass membrane protein. Cell projection, cilium .		
Tissue specificity	Detected in pancreas islets (at protein level). Detected in pancreas islets.		
Function	Catalytic activity:ATP = 3',5'-cyclic AMP + diphosphate.,cofactor:Binds 2 magnesium ions per subunit.,enzyme regulation:Inhibition by calcium in the submicromolar concentration range.,Function:This is a membrane-bound, calcium-inhibitable adenyl cyclase.,similarity:Belongs to the adenyl cyclase class-4/guanylyl cyclase family.,similarity:Contains 2 guanylate cyclase domains.,		

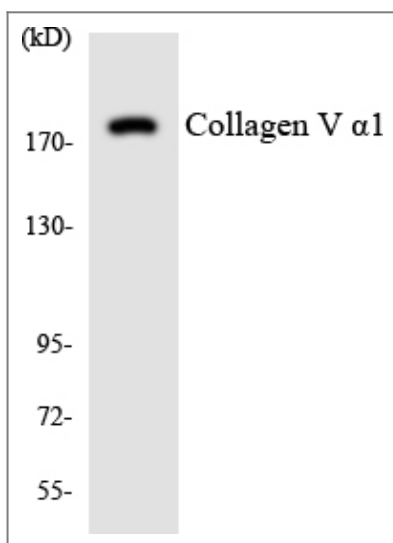
Validation Data



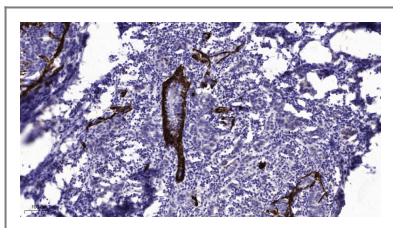
Western Blot analysis of COLO205 cells using A Cyclase V/VI Polyclonal Antibody



Western blot analysis of lysates from COLO205 cells, using ADCY5/6 Antibody. The lane on the right is blocked with the synthesized peptide.



Western blot analysis of the lysates from HUVEC cells using Collagen V α 1 antibody.



Immunohistochemical analysis of paraffin-embedded human Breast cancer. 1, Antibody was diluted at 1:200 (4° overnight). 2, Tris-EDTA, pH 9.0 was used for antigen retrieval. 3, Secondary antibody was diluted at 1:200 (room temperature, 45min).

Contact information

Orders: order.cn@immunoway.com
 Support: support.cn@immunoway.com
 Telephone: 400-8787-807 (China)
 Website: <http://www.immunoway.com.cn>
 Address: 2200 Ringwood Ave San Jose, CA 95131 USA



Please scan the QR code
 to access additional
 product information:
A Cyclase V/VI
Rabbit pAb