

## 4E-BP1 Rabbit pAb

CatalogNo: YT0021

Orthogonal Validated 

### Key Features

#### Host Species

- Rabbit

#### Reactivity

- Human, Mouse, Rat

#### Applications

- WB, IHC, IF, ELISA

#### MW

- 13kD (Calculated)  
18kD (Observed)

#### Isotype

- IgG

### Recommended Dilution Ratios

**WB 1:500-1:2000****IHC 1:100-1:300****ELISA 1:5000****IF 1:50-200**

### Storage

**Storage\*** -15°C to -25°C/1 year (Do not lower than -25°C)**Formulation** Liquid in PBS containing 50% glycerol, 0.5% BSA and 0.02% sodium azide.

### Basic Information

**Clonality** Polyclonal

### Immunogen Information

**Immunogen** The antiserum was produced against synthesized peptide derived from human 4E-BP1. AA range: 4-53**Specificity** 4E-BP1 Polyclonal Antibody detects endogenous levels of 4E-BP1 protein.

## | Target Information

**Gene name** EIF4EBP1

**Protein Name** Eukaryotic translation initiation factor 4E-binding protein 1

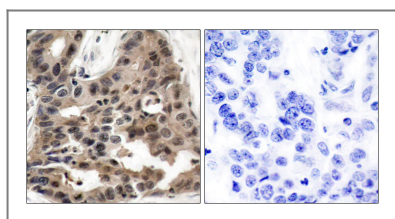
Organism	Gene ID	UniProt ID
Human	<a href="#">1978;</a>	<a href="#">Q13541;</a>
Mouse	<a href="#">13685;</a>	<a href="#">Q60876;</a>
Rat	<a href="#">116636;</a>	<a href="#">Q62622;</a>

**Cellular Localization** Nucleus

**Tissue specificity** Colon,Epithelium,Lung,Placenta,Platelet,

**Function** Function:Regulates eIF4E activity by preventing its assembly into the eIF4F complex. Mediates the regulation of protein translation by hormones, growth factors and other stimuli that signal through the MAP kinase pathway.,PTM:Phosphorylated on serine and threonine residues in response to insulin, EGF and PDGF. Phosphorylated upon DNA damage, probably by ATM or ATR.,similarity:Belongs to the eIF4E-binding protein family.,subunit:Nonphosphorylated EIF4EBP1 competes with EIF4G1/EIF4G3 to interact with EIF4E; insulin stimulated MAP-kinase (MAPK1 and MAPK3) phosphorylation of EIF4EBP1 causes dissociation of the complex allowing EIF4G1/EIF4G3 to bind and consequent initiation of translation. Rapamycin can attenuate insulin stimulation, mediated by FKBP.,

## | Validation Data



Immunohistochemistry analysis of paraffin-embedded human breast carcinoma tissue, using 4E-BP1 Antibody. The picture on the right is blocked with the synthesized peptide.

## | Contact information

Orders: order.cn@immunoway.com  
Support: support.cn@immunoway.com  
Telephone: 400-8787-807(China)  
Website: <http://www.immunoway.com.cn>  
Address: 2200 Ringwood Ave San Jose, CA 95131 USA



Please scan the QR code to access additional product information:  
**4E-BP1 Rabbit pAb**

