

14-3-3 σ Rabbit pAb

CatalogNo: YT0012

| Key Features

Host Species

- Rabbit

Reactivity

- Human, Mouse

Applications

- WB, IHC, IF, ELISA

MW

- 30kD (Observed)

Isotype

- IgG

| Recommended Dilution Ratios

IHC: 100-300

WB 1:500-1:2000

ELISA 1:20000

IF 1:50-200

| Storage

Storage*

-15°C to -25°C/1 year (Do not lower than -25°C)

Formulation

Liquid in PBS containing 50% glycerol, 0.5% BSA and 0.02% sodium azide.

| Basic Information

Clonality

Polyclonal

| Immunogen Information

Immunogen

The antiserum was produced against synthesized peptide derived from human SFN. AA range: 41-90

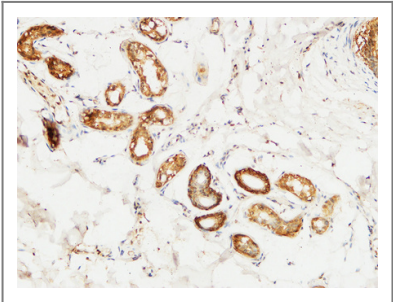
Specificity

14-3-3 σ Polyclonal Antibody detects endogenous levels of 14-3-3 σ protein.

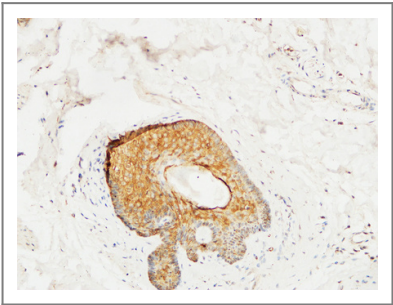
| Target Information

Gene name	SFN HME1		
Protein Name	14-3-3 protein sigma		
	Organism	Gene ID	UniProt ID
	Human	2810;	P31947;
	Mouse	55948;	O70456;
Cellular Localization	Cytoplasm. Nucleus . Secreted. May be secreted by a non-classical secretory pathway.		
Tissue specificity	Present mainly in tissues enriched in stratified squamous keratinizing epithelium.		
Function	Function:Adapter protein implicated in the regulation of a large spectrum of both general and specialized signaling pathway. Binds to a large number of partners, usually by recognition of a phosphoserine or phosphothreonine motif. Binding generally results in the modulation of the activity of the binding partner. When bound to KRT17, regulates protein synthesis and epithelial cell growth by stimulating Akt/mTOR pathway.,Function:p53-regulated inhibitor of G2/M progression.,similarity:Belongs to the 14-3-3 family.,subcellular location:May be secreted by a non-classical secretory pathway.,subunit:Homodimer. Interacts with KRT17 (By similarity). Found in a complex with XPO7, EIF4A1, ARHGAP1, VPS26A, VPS29, VPS35 and SFN.,tissue specificity:Present mainly in tissues enriched in stratified squamous keratinising epithelium.,		

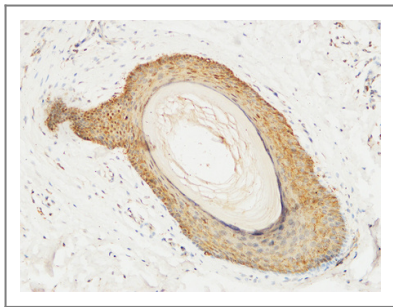
Validation Data



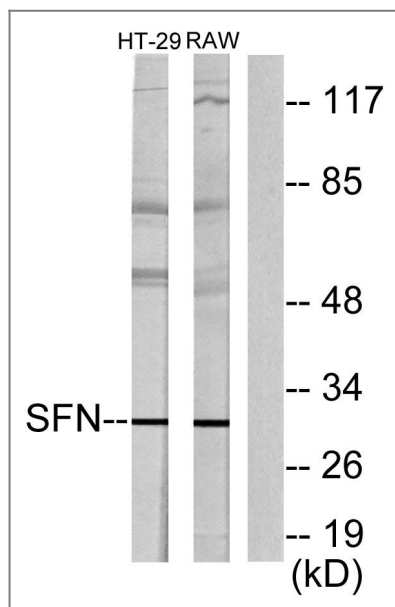
Immunohistochemical analysis of paraffin-embedded Human skin. 1, Antibody was diluted at 1:200(4° overnight). 2, High-pressure and temperature EDTA, pH8.0 was used for antigen retrieval. 3,Secondary antibody was diluted at 1:200(room temperature, 30min).



Immunohistochemical analysis of paraffin-embedded Human skin. 1, Antibody was diluted at 1:200(4° overnight). 2, High-pressure and temperature EDTA, pH8.0 was used for antigen retrieval. 3,Secondary antibody was diluted at 1:200(room temperature, 30min).



Immunohistochemical analysis of paraffin-embedded Human skin. 1, Antibody was diluted at 1:200(4° overnight). 2, High-pressure and temperature EDTA, pH8.0 was used for antigen retrieval. 3,Secondary antibody was diluted at 1:200(room temperature, 30min).



Western blot analysis of lysates from HT29 cells and RAW264.7 cells, using 14-3-3 sigma Antibody. The lane on the right is blocked with the synthesized peptide.

Contact information

Orders: order.cn@immunoway.com
 Support: support.cn@immunoway.com
 Telephone: 400-8787-807(China)
 Website: <http://www.immunoway.com.cn>
 Address: 2200 Ringwood Ave San Jose, CA 95131 USA



Please scan the QR code to access additional product information:
14-3-3σ Rabbit pAb

For Research Use Only. Not for Use in Diagnostic Procedures.

[Antibody](#) | [ELISA Kits](#) | [Protein](#) | [Reagents](#)