

## 14-3-3 ε Rabbit pAb

CatalogNo: YT0005

Orthogonal Validated 

### Key Features

#### Host Species

- Rabbit

#### Reactivity

- Human, Mouse, Rat

#### Applications

- WB, IHC, IF, ELISA

#### MW

- 29kD (Observed)

#### Isotype

- IgG

### Recommended Dilution Ratios

**WB 1:500-1:2000****IHC 1:100-1:300****IF 1:200-1:1000****ELISA 1:20000****Not yet tested in other applications.**

### Storage

**Storage\***

-15°C to -25°C/1 year(Do not lower than -25°C)

**Formulation**

Liquid in PBS containing 50% glycerol, 0.5% BSA and 0.02% sodium azide.

### Basic Information

**Clonality**

Polyclonal

### Immunogen Information

**Immunogen**

The antiserum was produced against synthesized peptide derived from human 14-3-3 epsilon. AA range:206-255

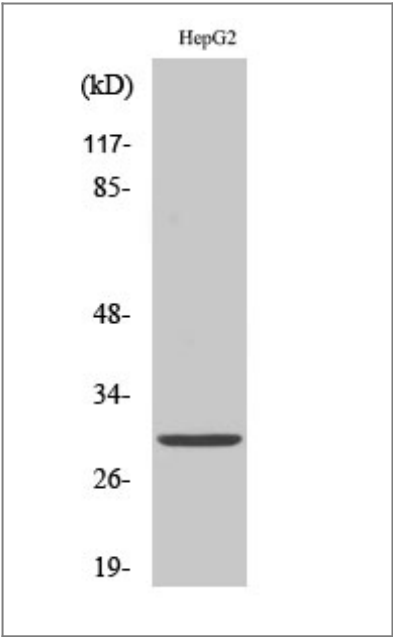
**Specificity**

14-3-3 ε Polyclonal Antibody detects endogenous levels of 14-3-3 ε protein.

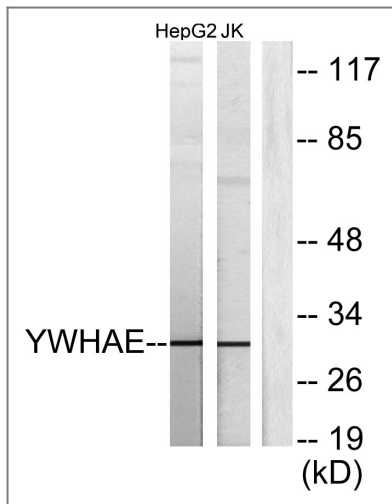
## Target Information

|                       |  |                         |                          |
|-----------------------|--|-------------------------|--------------------------|
| Gene name             | YWHAE  |                         |                          |
| Protein Name          | 14-3-3 protein epsilon   |                         |                          |
|                       | Organism   | Gene ID                 | UniProt ID               |
|                       | Human  | <a href="#">7531</a> ;  | <a href="#">P62258</a> ; |
|                       | Mouse  | <a href="#">22627</a> ; | <a href="#">P62259</a> ; |
|                       | Rat  | <a href="#">29753</a> ; | <a href="#">P62260</a> ; |
| Cellular Localization | Nucleus . Cytoplasm . Melanosome . Identified by mass spectrometry in melanosome fractions from stage I to stage IV. .   |                         |                          |
| Tissue specificity    | B-cell lymphoma,Brain,Cajal  |                         |                          |
| Function              | Function:Adapter protein implicated in the regulation of a large spectrum of both general and specialized signaling pathway. Binds to a large number of partners, usually by recognition of a phosphoserine or phosphothreonine motif. Binding generally results in the modulation of the activity of the binding partner.,similarity:Belongs to the 14-3-3 family.,subcellular location:Identified by mass spectrometry in melanosome fractions from stage I to stage IV.,subunit:Homodimer. Heterodimerizes with YWHAZ. Interacts with NDEL1, RGNEF and TIAM2 (By similarity). Interacts with HCV core protein. Interacts with ABL1 (phosphorylated form); the interaction retains it in the cytoplasm. Weakly interacts with CDKN1B., |                         |                          |

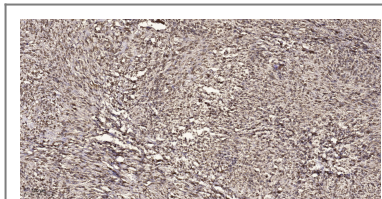
## Validation Data



Western Blot analysis of various cells using 14-3-3 ε Polyclonal Antibody diluted at 1:1000



Western blot analysis of lysates from HepG2 and Jurkat cells, using 14-3-3 epsilon Antibody. The lane on the right is blocked with the synthesized peptide.



Immunohistochemical analysis of paraffin-embedded human small intestinal carcinoma tissue. 1, primary Antibody was diluted at 1:200 (4° overnight). 2, Sodium citrate pH 6.0 was used for antigen retrieval (>98°C, 20min). 3, Secondary antibody was diluted at 1:200

## Contact information

Orders: order.cn@immunoway.com  
 Support: support.cn@immunoway.com  
 Telephone: 400-8787-807 (China)  
 Website: <http://www.immunoway.com.cn>  
 Address: 2200 Ringwood Ave San Jose, CA 95131 USA



Please scan the QR code to access additional product information:  
**14-3-3 ε Rabbit pAb**

For Research Use Only. Not for Use in Diagnostic Procedures.

[Antibody](#) | [ELISA Kits](#) | [Protein](#) | [Reagents](#)