

GSK3 β (Phospho Ser9) (6H6) Mouse mAb

CatalogNo: YP1886

Key Features

Host Species

- Mouse

Reactivity

- Human, Mouse, Rat

Applications

- IHC, WB

MW

- 46kD (Observed)

Recommended Dilution Ratios

IHC1:50-200

WB 1:1000-2000

Storage

Storage* -15°C to -25°C/1 year(Do not lower than -25°C)

Formulation Liquid in PBS containing 50% glycerol, 0.5% BSA and 0.02% sodium azide.

Basic Information

Clonality Monoclonal

Clone Number 6H6

Immunogen Information

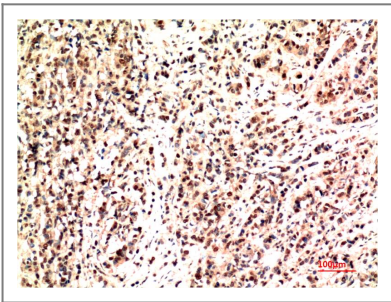
Immunogen Synthesized peptide derived from human Phospho-GSK3 β (Ser9)

Specificity This antibody detects endogenous levels of Phospho-GSK3 β (Ser9) at Human, Mouse, Rat

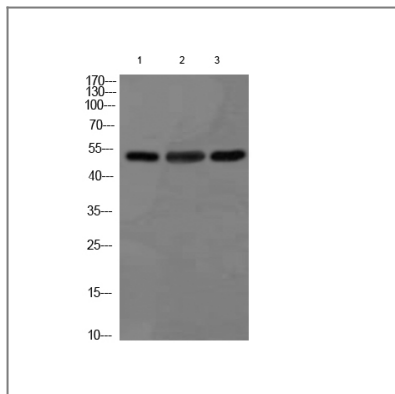
Target Information

Gene name	GSK3B		
Protein Name	Phospho-GSK3β(Ser9)		
	Organism	Gene ID	UniProt ID
	Human	2932 ;	P49841 ;
	Mouse	56637 ;	Q9WV60 ;
	Rat	84027 ;	P18266 ;
Cellular Localization	Cytoplasm . Nucleus . Cell membrane . The phosphorylated form shows localization to cytoplasm and cell membrane (PubMed:20937854). The MEMO1-RHOA-DIAPH1 signaling pathway controls localization of the phosphorylated form to the cell membrane (PubMed:20937854). .		
Tissue specificity	Expressed in testis, thymus, prostate and ovary and weakly expressed in lung, brain and kidney. Colocalizes with EIF2AK2/PKR and TAU in the Alzheimer disease (AD) brain.		
Function	Catalytic activity:ATP + [tau protein] = ADP + [tau protein] phosphate.,enzyme regulation:Inhibited when phosphorylated by AKT1.,Function:Participates in the Wnt signaling pathway. Implicated in the hormonal control of several regulatory proteins including glycogen synthase, MYB and the transcription factor JUN. Phosphorylates JUN at sites proximal to its DNA-binding domain, thereby reducing its affinity for DNA. Phosphorylates MUC1 in breast cancer cells, and decreases the interaction of MUC1 with CTNNB1/beta-catenin.,PTM:Phosphorylated by AKT1 and ILK1.,similarity:Belongs to the protein kinase superfamily.,similarity:Belongs to the protein kinase superfamily. CMGC Ser/Thr protein kinase family. GSK-3 subfamily.,similarity:Contains 1 protein kinase domain.,subunit:Monomer (By similarity). Interacts with CABYR, MUC1, NIN and PRUNE.,tissue specificity:Expressed in testis, thymus, prostate and ovary and weakly expressed in lung, brain and kidney.,		

| Validation Data



Immunohistochemical analysis of paraffin-embedded Human Lung Carcinoma Tissue using GSK3β Mouse mAb diluted at 1:200.



Western blot analysis of 1) Hela Cell Lysate, 2) Mouse Heart Tissue Lysate, 3) Rat Heart Tissue Lysate using GSK 3 β Mouse mAb diluted at 1:1000.

Contact information

Orders: order.cn@immunoway.com
Support: support.cn@immunoway.com
Telephone: 400-8787-807(China)
Website: <http://www.immunoway.com.cn>
Address: 2200 Ringwood Ave San Jose, CA 95131 USA



Please scan the QR code to access additional product information:

GSK3 β (Phospho Ser9) (6H6) Mouse mAb

For Research Use Only. Not for Use in Diagnostic Procedures.

[Antibody](#) | [ELISA Kits](#) | [Protein](#) | [Reagents](#)